

NOTES:

1. GLAZING - .125" MINIMUM DSB GLAZING INSTALLED WITH ALUMINUM RETAINERS IN ORDER TO MEET UNIFORM STATIC DESIGN PRESSURES SHOWN ON THIS DRAWING. GLAZING IS NOT IMPACT RESISTANT AND DOES NOT MEET THE REQUIREMENTS FOR WIND-BORNE DEBRIS REGIONS.

2. MINIMUM OF 1" OVERLAP ON BOTH JAMBS REQUIRED TO MEET NEGATIVE DESIGN PRESSURES.

3. SLIDE LOCK OR OPERATOR REQUIRED.

4. ALL RAILS AND STILES SHALL BE EXTRUDED ALUMINUM ALLOY 6063-T6 WITH THE FOLLOWING MINIMUM THICKNESS:
 MODEL 400: 2"
 MODEL 451: 1-5/16"
 MODEL 452: 1-5/16"
 MODEL 8850: 1-5/16"

5. THE DESIGN OF THE SUPPORTING STRUCTURAL ELEMENTS SHALL BE THE RESPONSIBILITY OF THE PROFESSIONAL OF RECORD FOR THE BUILDING OR STRUCTURE AND IN ACCORDANCE WITH CURRENT BUILDING CODES FOR THE LOADS LISTED ON THIS DRAWING.

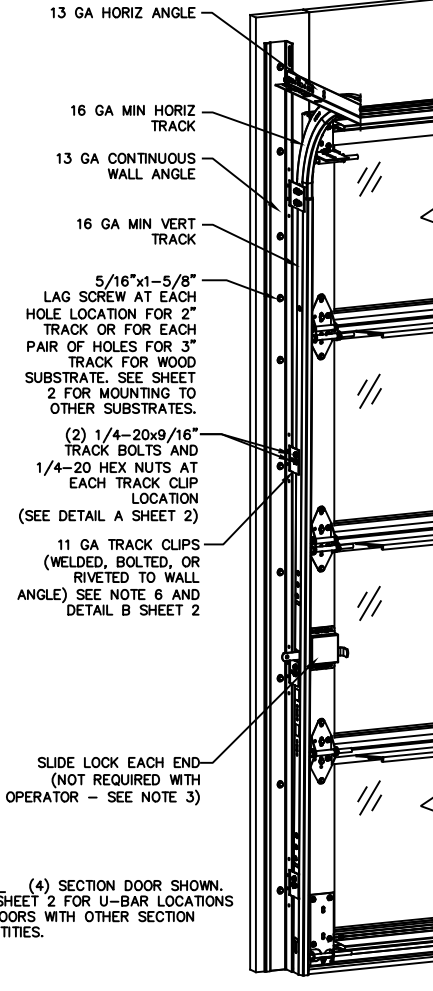
6. TRACK CLIPS SHALL BE LOCATED WITH CENTERLINE OF BOTTOM CLIP SPACED 10" MAX FROM BOTTOM OF TRACK AND REMAINING TRACK CLIPS SPACED AT 24" O.C. MAX. SPACING BETWEEN TOP TRACK CLIP AND SPLICE PLATE SHALL BE 30" O.C. MAX.

(2) 1/4-20x9/16" TRACK BOLTS AND 1/4-20 HEX NUTS AT EACH TRACK CLIP LOCATION (SEE DETAIL A SHEET 2)

11 GA TRACK CLIPS (WELDED, BOLTED, OR RIVETED TO WALL ANGLE) SEE NOTE 6 AND DETAIL B SHEET 2

SLIDE LOCK EACH END (NOT REQUIRED WITH OPERATOR - SEE NOTE 3)

NOTE: (4) SECTION DOOR SHOWN. SEE SHEET 2 FOR U-BAR LOCATIONS ON DOORS WITH OTHER SECTION QUANTITIES.



11 GA COMMERCIAL 'L' FRAME TOP BRACKET ATTACHED WITH (4) 1/4-20x7/8" SELF DRILLING SCREWS

13 GA ROLLER SLIDE ATTACHED TO UNDERSIDE OF THE BRACKET WITH A 5/16-18 BOLT & NUT IN THE CENTER SLOT

ADD (2) 1/4-20x7/8" SELF DRILLING SCREWS (INSIDE OF ALL END HINGES)

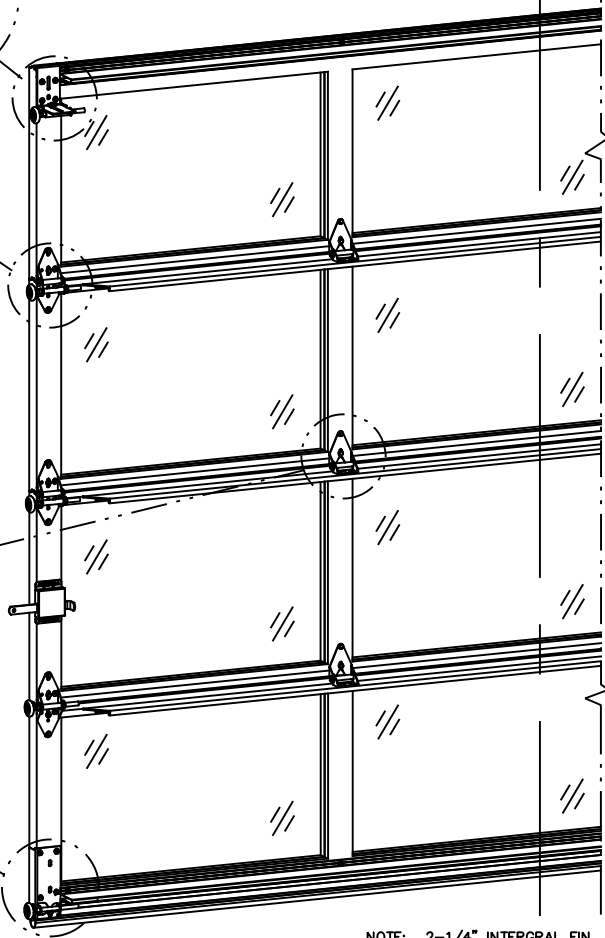
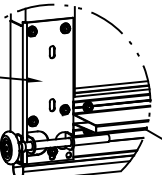
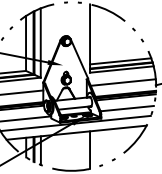
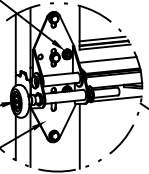
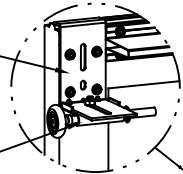
2" STEEL ROLLER WITH 5-1/8" STEM AND 7/16" PUSHNUT AT EACH ROLLER LOCATION EXCEPT BOTTOM BRACKET. 1/4" MAX BETWEEN PUSHNUT AND BRACKET OR HINGE

14 GA WIDE BODY END HINGE ATTACHED WITH (4) 1/4-14x5/8" SELF TAPPING SCREWS

14 GA WIDE BODY HALF HINGE ATTACHED WITH (2) 1/4-20x7/8" SELF DRILLING SCREWS (UPPER HALF)

(2) 1/4x1/2" CARRIAGE BOLTS AND 1/4" FLANGE NUTS (LOWER HALF)

13 GA BOTTOM BRACKET ATTACHED WITH (5) 1/4-20x7/8" SELF DRILLING SCREWS



NOTE: 2-1/4" INTEGRAL FIN LOCATED AT THE TOP OF EACH SECTION EXCEPT TOP SECTION

SUPERIMPOSED DESIGN PRESSURE LOADS ON SUPPORTING STRUCTURE

MAX DOOR WIDTH	DOOR HEIGHT	MAX UNIFORM LOAD EACH JAMB (PLF)
10'-2"	ALL	+157.6/-157.6

REVISIONS

- P1 ADDED MODEL 400 TO OPTION CODE. UPDATED NOTE 4 FOR MODEL 400 THICKNESS. GRT 5/18/06
- P2 CHANGED DIRECT MOUNT TO CONCRETE DETAIL FROM 5/16" POWERS LOK/BOLT SLEEVE TO SIMPSON TITEN HD SCREW ANCHOR GRT 5/25/07
- P3 ADDED MODEL 8850. ADDED TEXAS LICENSE NUMBER TO TITLE BLOCK. ADDED TRACK CLIP DETAIL AND UPDATED DIRECT MOUNT DETAILS. GRT 11/05/08



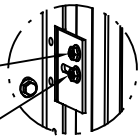
3395 ADDISON DRIVE
 PENSACOLA, FLORIDA 32514
 (850) 474-9890

STATIC PRESSURE RATINGS		APPROVED SIZES		SCALE: N.T.S.		SIZE: A	
DESIGN (PSF):	+31.00/-31.00	MAX WIDTH:	10'-2"	DRAWN	DATE	NAME	
TEST (PSF):	+46.50/-46.50	MAX HEIGHT:	24'-1"	CHECKED	3/15/06	MRB	
IMPACT/CYCLIC RATED (YES/NO): NO				MAX SECTION HEIGHT: 24"		SHEET 1 OF 2	
MODELS 400/451/452/8850						DRAWING PART NO.	
WINDLOAD SPECIFICATION OPTION CODE 0450						319014	
						REV. P3	

MARK R. BARROW, PE
 FLORIDA LICENSE NO. 57389
 TEXAS LICENSE NO. 93119

1/4" HOLE IS REQUIRED TO BE DRILLED THROUGH BOTH THE TRACK AND THE TRACK CLIP AT EACH TRACK CLIP LOCATION IN ORDER TO INSTALL SECOND 1/4-20x9/16" TRACK BOLT AND 1/4-20 HEX NUT.

1/4-20x9/16" TRACK BOLT AND 1/4-20 HEX NUT THROUGH THE SLOT IN THE TRACK AND TRACK CLIP



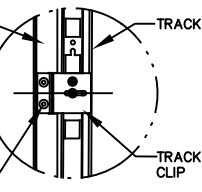
DETAIL A

CONTINUOUS WALL ANGLE

TRACK

(2) 1/4" X 7/16 SEMI TUBULAR RIVETS OR (2) 1/4"-20 TRACK BOLTS WITH NUTS OR (2) .28" DIA RESISTANCE SPOT WELDS

TRACK CLIP



DETAIL B

MIN 3/16" THICK STEEL FOR MOUNTING

MOUNTING WALL ANGLE

TRACK CLIP

1/4-20x9/16" TRACK BOLT AND 1/4-20 HEX NUT

TRACK

OPTIONAL: WALL ANGLE MAY BE ATTACHED TO SUPPORTING STEEL WITH MIN. (1) 1/4-20x7/8" SELF DRILLING SCREW WITH 1" O.D. WASHER AT EACH HOLE OR PAIR OF HOLE LOCATIONS IN LIEU OF WELDING

MOUNTING TO STEEL DETAIL

2 3/4" MIN EDGE DIST

3/8" SIMPSON TITEN HD, 2-3/4" MIN EMBED INTO MIN 2000 PSI CONCRETE AT EACH HOLE OR PAIR OF HOLE LOCATION

MOUNTING WALL ANGLE

TRACK CLIP

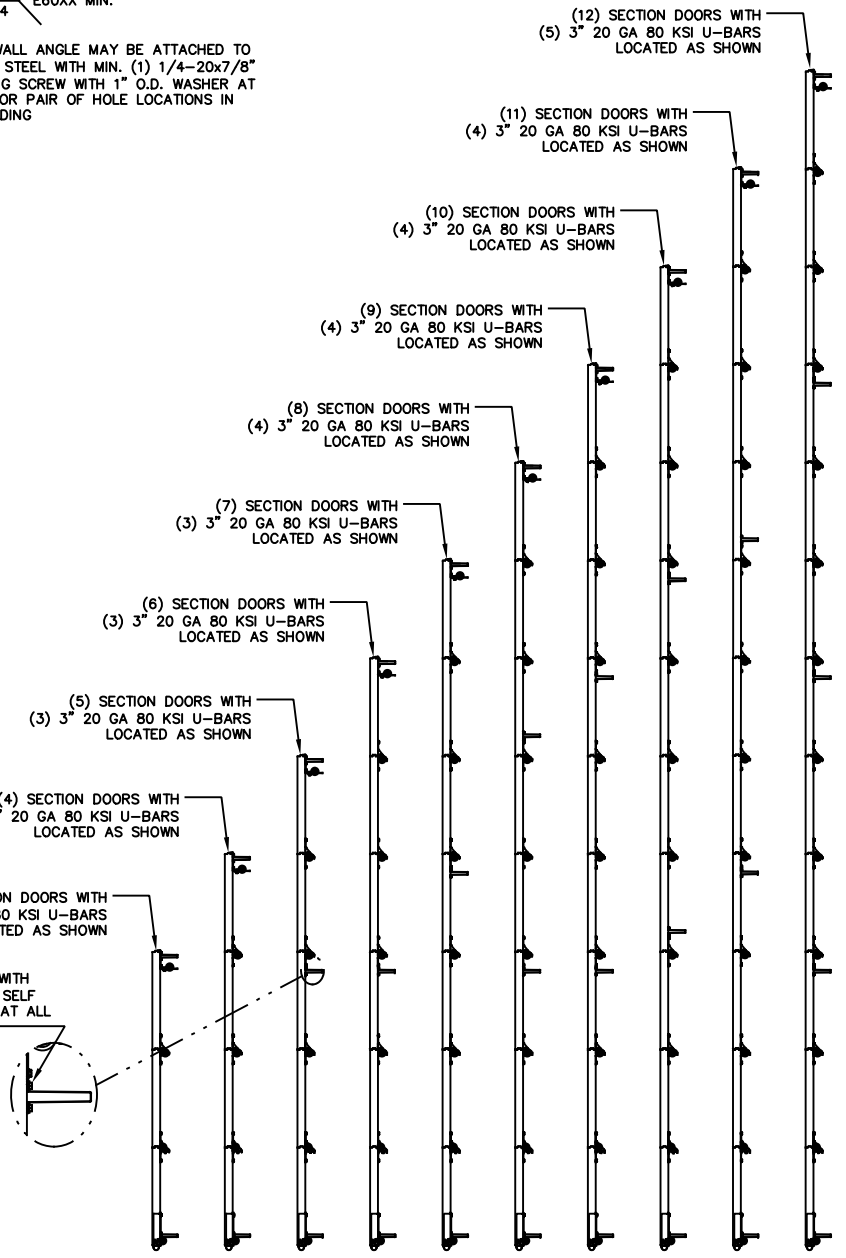
(2) 1/4-20x9/16" TRACK BOLT AND 1/4-20 HEX NUT

TRACK

CONCRETE MOUNTING DETAIL

CONCRETE MOUNTING DETAIL

ATTACH U-BARS WITH (2) 1/4-20x7/8" SELF DRILLING SCREWS AT ALL STILE LOCATIONS.



REVISIONS

P1 ADDED MODEL 400 TO OPTION CODE. UPDATED NOTE 4 FOR MODEL 400 THICKNESS. GRT 5/18/06

P2 CHANGED DIRECT MOUNT TO CONCRETE DETAIL FROM 5/16" POWERS LOK/BOLT SLEEVE TO SIMPSON TITEN HD SCREW ANCHOR GRT 5/25/07

P3 ADDED MODEL 8850. ADDED TEXAS LICENSE NUMBER TO TITLE BLOCK. ADDED TRACK CLIP DETAIL AND UPDATED DIRECT MOUNT DETAILS. GRT 11/05/08

MARK R. BARROW, PE
FLORIDA LICENSE NO. 57389
TEXAS LICENSE NO. 93119

Wayne Dalton

3395 ADDISON DRIVE
PENSACOLA, FLORIDA 32514
(850) 474-9890

STATIC PRESSURE RATINGS		APPROVED SIZES		SCALE: N.T.S.		SIZE: A	
DESIGN (PSF):	+31.00/-31.00	MAX WIDTH:	10'-2"	DATE	NAME		
TEST (PSF):	+46.50/-46.50	MAX HEIGHT:	24'-1"	DRAWN	GRT		
IMPACT/CYCLIC RATED (YES/NO):	NO	MAX SECTION HEIGHT:	24"	CHECKED	MRB		
MODELS 400/451/452/8850				SHEET 2 OF 2			
WINDLOAD SPECIFICATION OPTION CODE 0450				DRAWING PART NO.		REV.	
				319014		P3	