

ROLLER / SEAL REPLACEMENT INSTRUCTIONS FOR DOOR MODELS 888 AND 889



This installation manual provides the trained door technician information required to replace the belts.
READ COMPLETE INSTRUCTIONS BEFORE PROCEEDING WITH REPAIR.

Refer to the your Door Installation Instructions for additional safety warnings and precautions. Manual may also be used as a reference for any items that are not addressed by this document.
Installation Manuals can be accessed at <https://www.Wayne-Dalton.com/Documents>.

This manual is intended ONLY for professional use by a trained door systems technician.

- Follow the standard work below when replacing the rollers or the seals. Failure to do so may result in severe or fatal injury.
- Refer to your Door Installation Instructions for additional safety warnings and precautions. Manual may also be used as a reference for any items that are not addressed by this document.
- Door should be in the fully closed position for this project.

⚠ WARNING

These Doors are large, heavy objects that move. Since moving objects can cause injuries, your safety and the safety of others depends on you reading the information in this manual. If you have any questions or do NOT understand the information presented, call technical support at 1-800-764-1457 (Option 2).

In this section and those that follow, the words "**DANGER**", "**WARNING**", and "**CAUTION**" are used to stress important safety information. The word:

⚠ DANGER indicates an imminently hazardous situation which, if not avoided, is likely to result in death or serious injury.

⚠ WARNING indicates a potentially hazardous situation which, if not avoided, could result in death or serious injury.

⚠ CAUTION indicates a potentially hazardous situation which, if not avoided, may result in injury or property damage.

The word **NOTE** is used to indicate important steps to be followed or important considerations.

1. FOR REPLACING THE ROLLERS OR THE SEALS: With the door in the fully closed position, remove the bolts that hold the guide covers in place. Set bolts aside in a safe place and open guides, as shown in **FIG 1.0**.

NOTE: Guide covers swing open on hinges, or can be lifted off hinge pins and removed to ease installation.

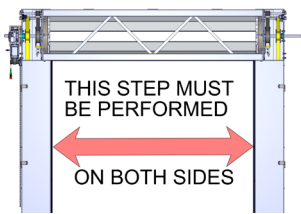
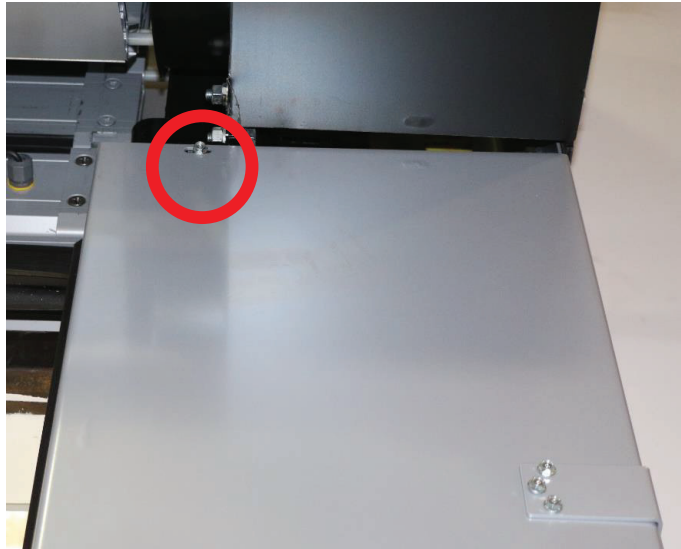


FIG 1.0

2. FOR REPLACING ROLLERS:

⚠ WARNING

LINE POWER should **DE-ENERGIZED** at this time. In the following steps electrical components will be physically removed and new components mounted. Ensure that all incoming power supplies have been de-energized prior to beginning work on attachment of electrical control systems. Use proper Lock Out/Tag Out procedures. Do NOT connect components to electrical supply until directed to do so. Failure to follow this warning could result in serious injury or death as well as equipment damage.

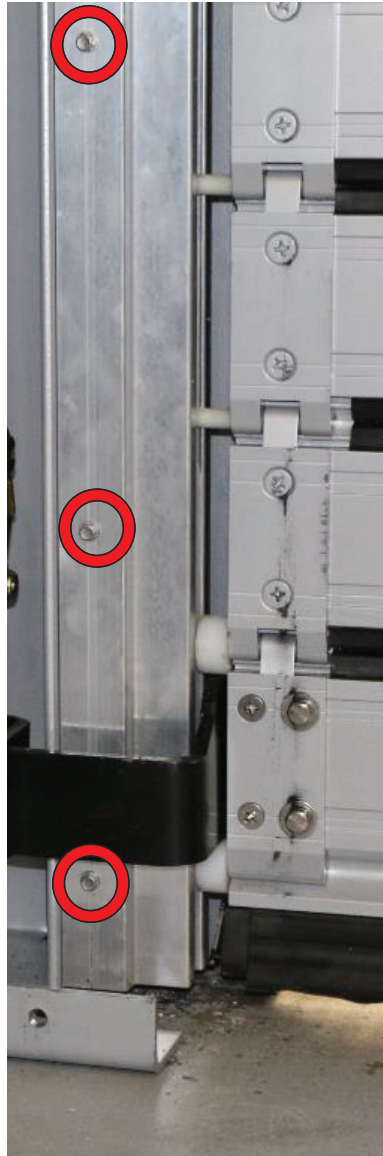
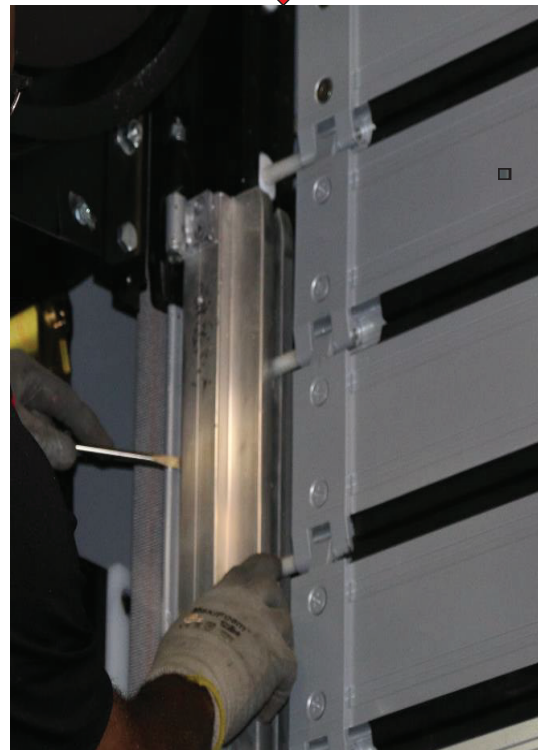


FIG 2.0



Starting on the left hand side of the door, remove the bolts from the aluminum track and remove the exterior guide from the guides. Set bolts and tracks aside in a safe place. Starting at the top portion of the guide and using a flat screwdriver, gently pry the exterior guide from the angle, as shown in **FIG 2.0**.

Remove the bolts from hinge. Two above the roller and two below. Set bolts and tracks aside in a safe place. Remove the roller assembly from the curtain and discard. Install the new roller assembly and re-install the bolts into the hinge, as shown in **FIG 2.1**. Repeat the same process for the other rollers. Re-attach the aluminum track and the exterior guide to the guide, as shown in **FIG 2.0**. Repeat the same process for the right hand side.

RE-ENERGIZED the power to the power supply. Cycle door a few times to ensure everything is operating as it should.

Close or re-attach the guide covers, as shown in **FIG 1.0**.

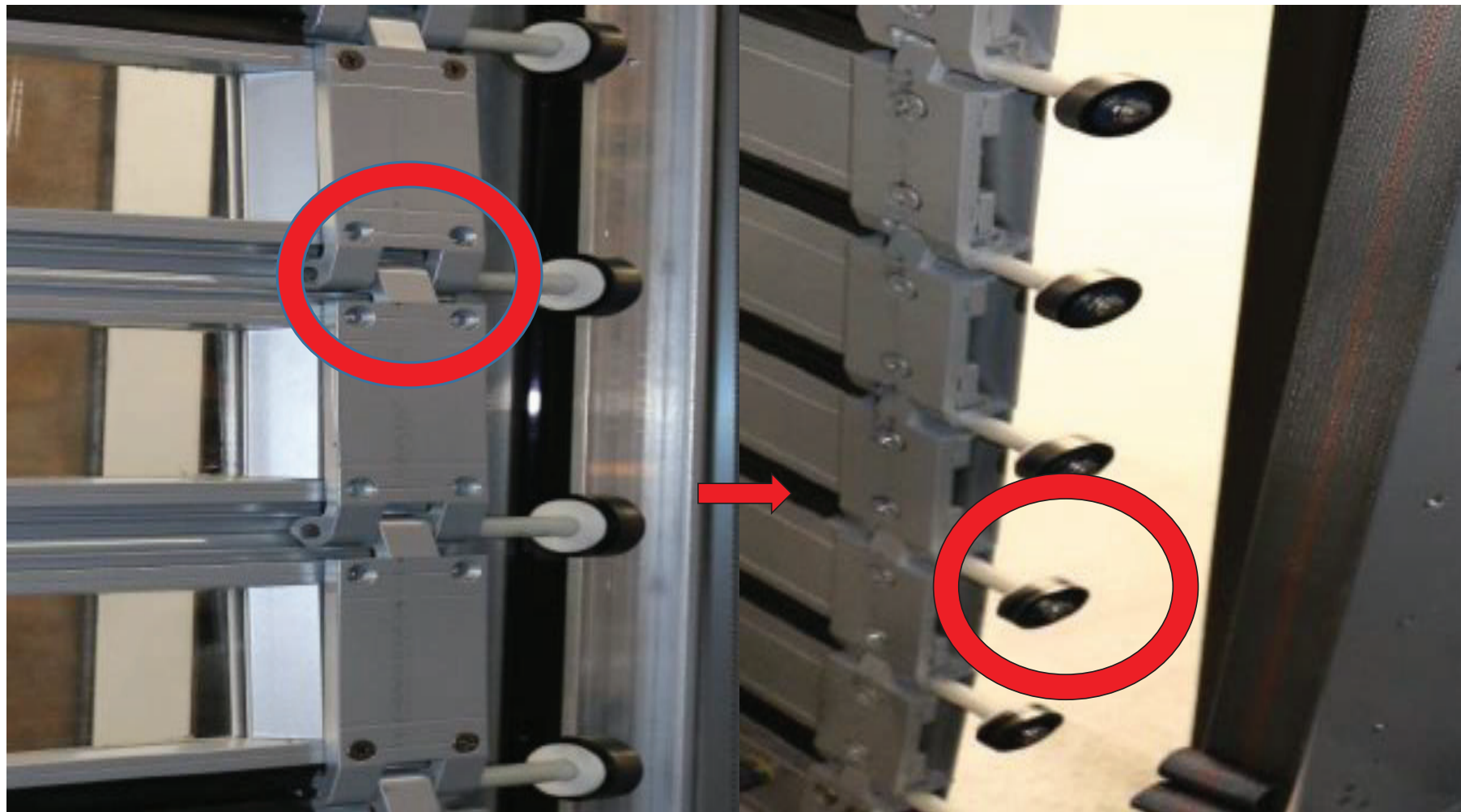


FIG 2.1

3. FOR REPLACING SEALS:

⚠ WARNING

LINE POWER should **DE-ENERGIZED** at this time. In the following steps electrical components will be physically removed and new components mounted. Ensure that all incoming power supplies have been de-energized prior to beginning work on attachment of electrical control systems. Use proper Lock Out/Tag Out procedures. Do NOT connect components to electrical supply until directed to do so. Failure to follow this warning could result in serious injury or death as well as equipment damage.

Remove the bolts from the hinge. Two above the roller and two below. Set bolts aside in a safe place. Starting at one end, pull out the seal, as shown in **FIG 3.0**. Discard old seal.

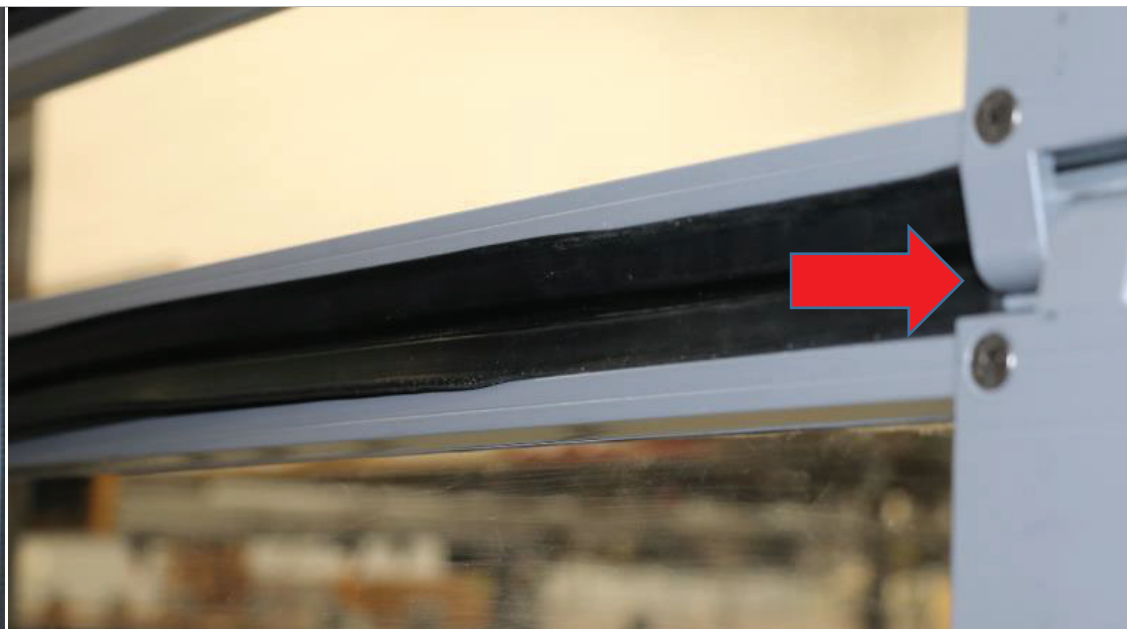
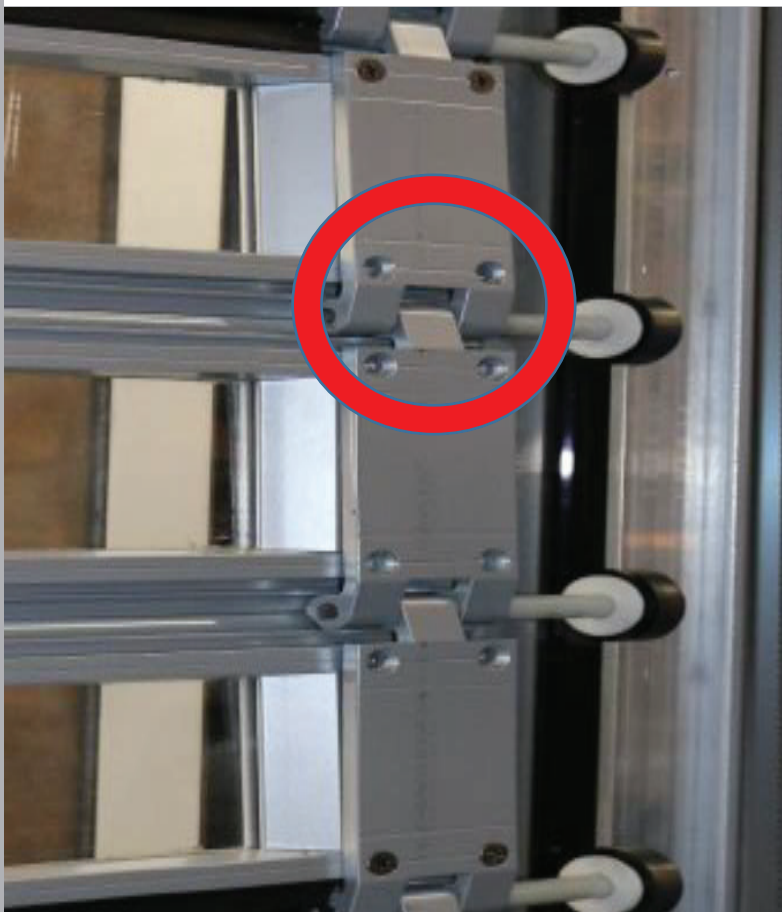


FIG 3.0

Install the new seal by pressing in at the middle portion of the door, then from each ends (2,3). Push from one end to the other (3 to 1, then 2 to 1), as shown in **FIG 3.1**.

NOTE: To make it easier to press in the seal, wipe or spray soapy water on the front and back surface of the seal. This will make it easier to push in, as well as slide your hand along and press the seal into the groove. if needed, repeat the same process for other seal replacement.

RE-ENERGIZED the power to the power supply. Cycle door a few times to ensure everything is operating as it should.

Close or re-attach the guide covers, as shown in **FIG 1.0**.

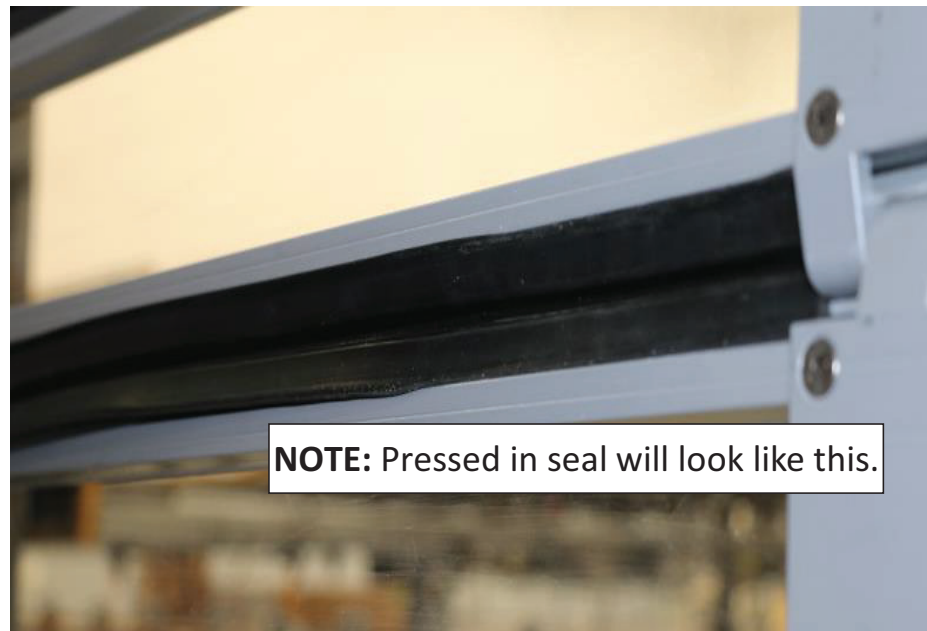
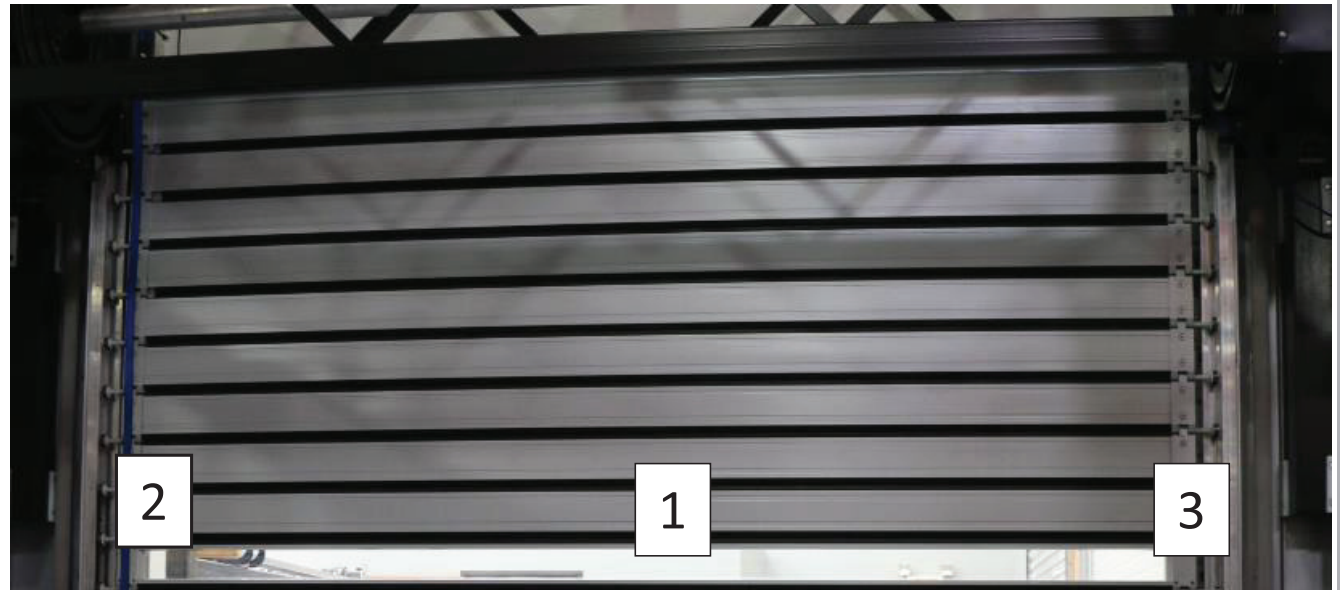


FIG 3.1