

MOTOR, ENCODER, CONTROL PANEL, HOOD AND SIDE COVER REPLACEMENT INSTRUCTIONS FOR DOOR MODELS 888 AND 889



This installation manual provides the trained door technician information required to replace the belts.
READ COMPLETE INSTRUCTIONS BEFORE PROCEEDING WITH REPAIR.

Refer to the your Door Installation Instructions for additional safety warnings and precautions. Manual may also be used as a reference for any items that are not addressed by this document.
Installation Manuals can be accessed at <https://www.Wayne-Dalton.com/Documents>.

This manual is intended **ONLY** for professional use by a trained door systems technician.

- Follow the standard work below when replacing either the motor, the motor cable, the encoder assembly, the control panel or the hood and side cover components. Failure to do so may result in severe or fatal injury.
- Refer to your Door Installation Instructions for additional safety warnings and precautions. Manual may also be used as a reference for any items that are not addressed by this document.
- Door should be in the fully closed position for this project.

⚠ WARNING

These Doors are large, heavy objects that move. Since moving objects can cause injuries, your safety and the safety of others depends on you reading the information in this manual. If you have any questions or do NOT understand the information presented, call technical support at 1-800-764-1457 (Option 2).

In this section and those that follow, the words "**DANGER**", "**WARNING**", and "**CAUTION**" are used to stress important safety information. The word:

⚠ DANGER indicates an imminently hazardous situation which, if not avoided, is likely to result in death or serious injury.

⚠ WARNING indicates a potentially hazardous situation which, if not avoided, could result in death or serious injury.

⚠ CAUTION indicates a potentially hazardous situation which, if not avoided, may result in injury or property damage.

The word **NOTE** is used to indicate important steps to be followed or important considerations.

TABLE OF CONTENTS

SECTION	CONTENTS	PAGES
1	Motor Replacement	2
2	Motor Cable Replacement	3
3	Encoder Assembly, Encoder Chain, Drive Sprocket	4
4	Control Panel	5
5	Hood, Side Covers, and Motor Cover	6

SECTION 1 - MOTOR REPLACEMENT

1. Turn off power in control panel at the disconnect.

⚠ WARNING

LINE POWER should **DE-ENERGIZED** at this time. In the following steps electrical components will be physically removed and new components mounted. Ensure that all incoming power supplies have been de-energized prior to beginning work on attachment of electrical control systems. Use proper Lock Out/Tag Out procedures. Do NOT connect components to electrical supply until directed to do so. Failure to follow this warning could result in serious injury or death as well as equipment damage.

Unwire the motor, brake, and the ground cables from the control panel, as shown in **FIG 1.0**. Open motor junction box and unwire motor, brake, and ground cables, as shown in **FIG 1.1**. Remove the chain, the encoder, the sprocket, and the key from the motor and shaft. Remove the motor bolts and set aside. Slide the motor off of the shaft, as shown in **FIG 1.2**.

Repeat process in reverse order to install the new motor. **RE-ENERGIZED** the power to the power supply. Cycle door a few times and verify that the motor is working good.

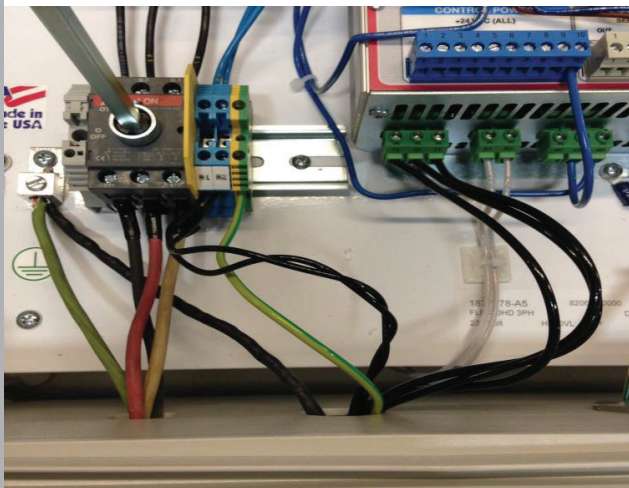


FIG 1.0

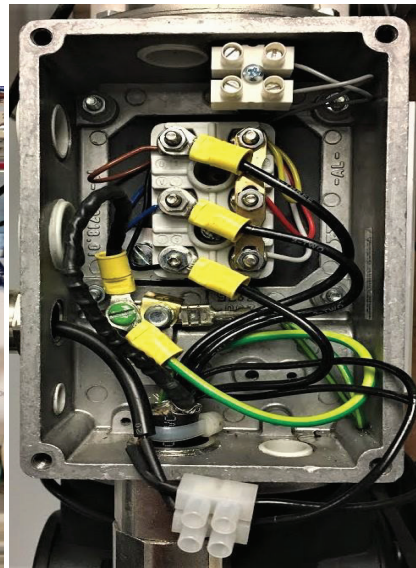


FIG 1.1

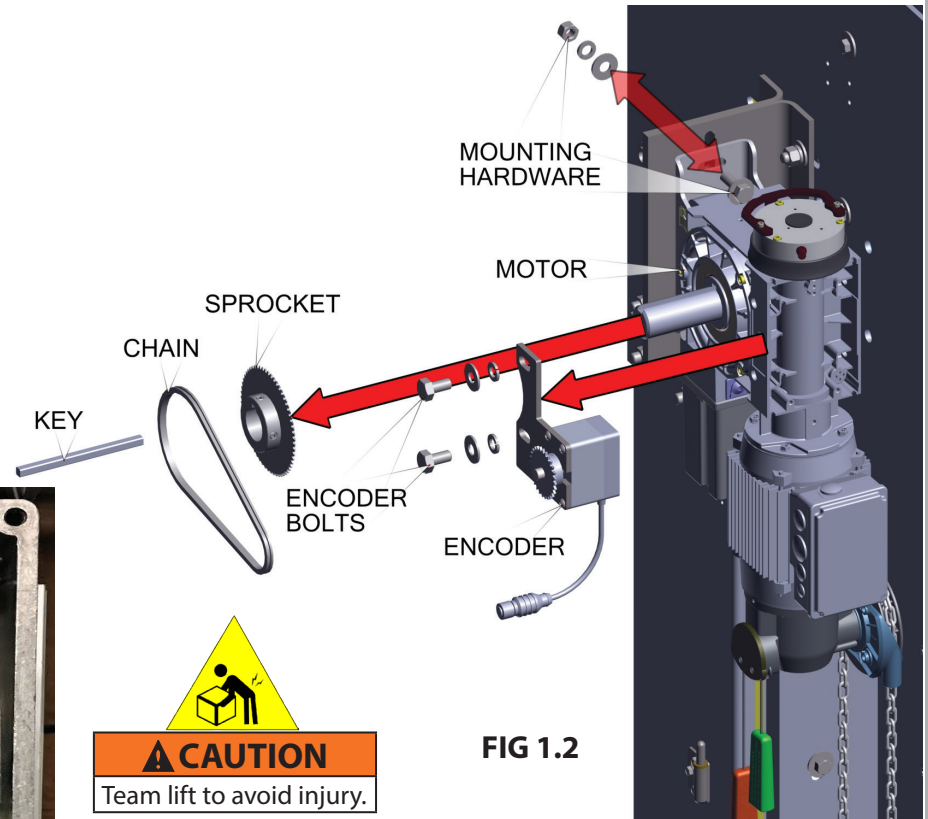


FIG 1.2

SECTION 2 - MOTOR CABLE REPLACEMENT

2. Turn off power in control panel at the disconnect.

⚠ WARNING

LINE POWER should **DE-ENERGIZED** at this time. In the following steps electrical components will be physically removed and new components mounted. Ensure that all incoming power supplies have been de-energized prior to beginning work on attachment of electrical control systems. Use proper Lock Out/Tag Out procedures. Do NOT connect components to electrical supply until directed to do so. Failure to follow this warning could result in serious injury or death as well as equipment damage.

Unwire the motor, brake, and the ground cables from the control panel, as shown in **FIG 2.0**. Open motor junction box and unwire motor, brake, and ground cables, as shown in **FIG 2.1**. Repeat process in reverse order to install the new motor cable. RE-ENERGIZED the power to the power supply. Cycle door a few times and verify that the motor is working good.

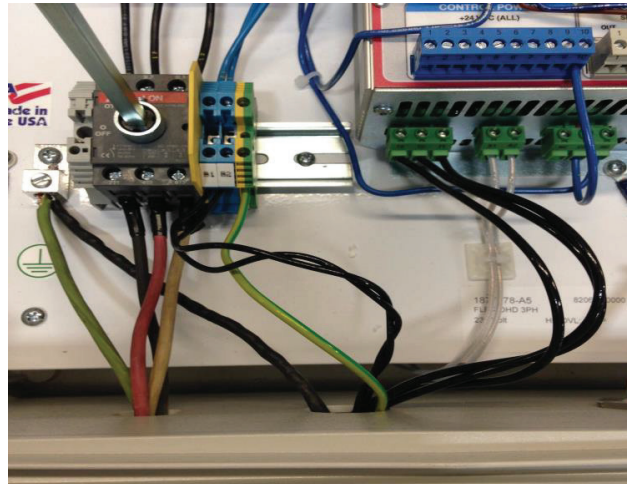


FIG 2.0

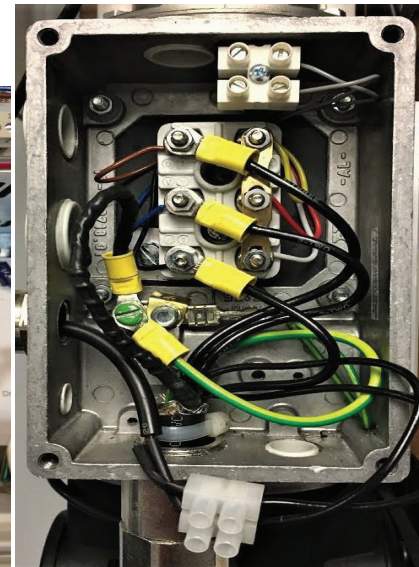


FIG 2.1

SECTION 3 - ENCODER ASSEMBLY, CHAIN, DRIVE SPROCKET

3. Turn off power in control panel at the disconnect.

⚠ WARNING

LINE POWER should **DE-ENERGIZED** at this time. In the following steps electrical components will be physically removed and new components mounted. Ensure that all incoming power supplies have been de-energized prior to beginning work on attachment of electrical control systems. Use proper Lock Out/Tag Out procedures. Do NOT connect components to electrical supply until directed to do so. Failure to follow this warning could result in serious injury or death as well as equipment damage.

3A. FOR THE ENCODER ASSEMBLY, SEE FIG 3.0.

- Loosen encoder bolts
- Remove chain
- Remove encoder assembly, line up with drive sprocket, and unplug cable.
- Install new encoder assembly and plug in cable. Do not tighten bolts.
- Install chain. Tighten down bolts to set chain tension at 1/8" of play.
- RE-ENERGIZED the power to the power supply. Cycle door a few times and verify that the motor is working good.

3B. FOR THE DRIVE SPROCKET, SEE FIG 3.0.

- Loosen encoder bolts
- Remove chain
- Loosen set screw in sprocket and remove from shaft
- Install new sprocket, line up with encoder sprocket, and tighten set screw
- Install chain. Tighten down bolts to set chain tension at 1/8" of play.
- RE-ENERGIZED the power to the power supply. Cycle door a few times and verify that the motor is working good.

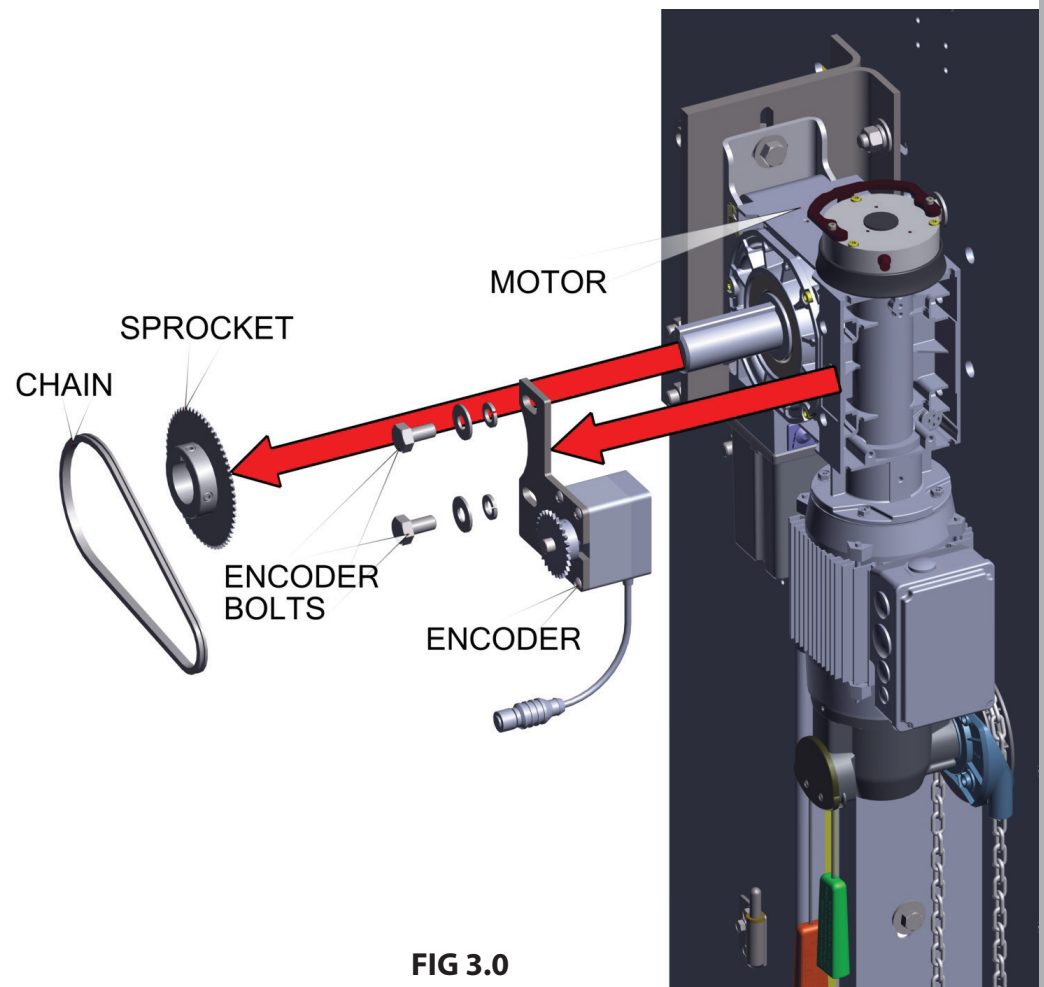


FIG 3.0

SECTION 4 - CONTROL PANEL REPLACEMENT

4. Turn off power in control panel and at the power in the control panel at the disconnect.

⚠ WARNING

LINE POWER should **DE-ENERGIZED** at this time. In the following steps electrical components will be physically removed and new components mounted. Ensure that all incoming power supplies have been de-energized prior to beginning work on attachment of electrical control systems. Use proper Lock Out/Tag Out procedures. Do NOT connect components to electrical supply until directed to do so. Failure to follow this warning could result in serious injury or death as well as equipment damage.

Unwire the motor, brake, and the ground cables from the control panel, as shown in **FIG 4.0**. Unplug the encoder, seywave host, and the junction box cable from bottom of control panel, as shown in **FIG 4.1**. Remove the control panel from the wall and discard. Install the new control panel to the wall. Wire all the cables back into control panel. RE-ENERGIZED the power to the power supply. Cycle door a few times and verify that the control panel is working good.

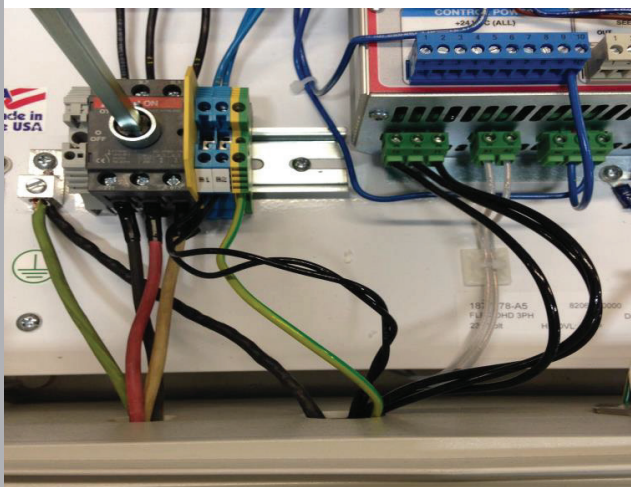


FIG 4.0

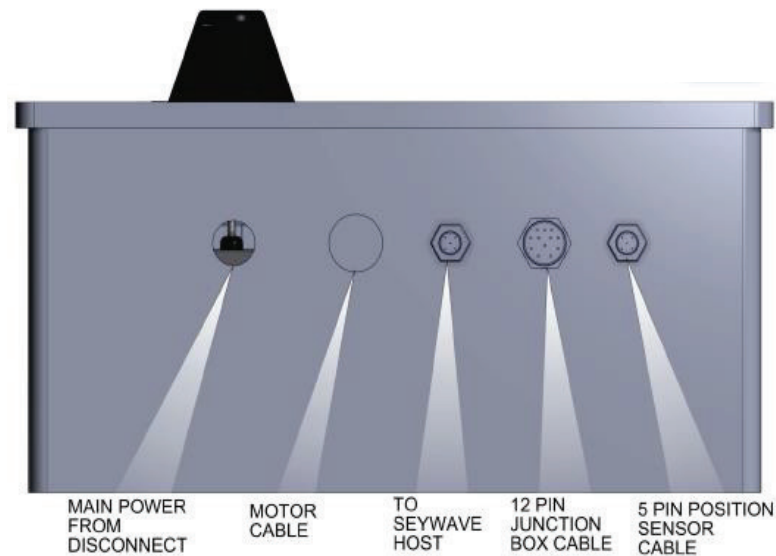


FIG 4.1

SECTION 5 - HOOD, SIDE COVER, MOTOR COVER REPLACEMENT

5. Turn off power in control panel and at the power in the control panel at the disconnect.

⚠ WARNING

LINE POWER should **DE-ENERGIZED** at this time. In the following steps electrical components will be physically removed and new components mounted. Ensure that all incoming power supplies have been de-energized prior to beginning work on attachment of electrical control systems. Use proper Lock Out/Tag Out procedures. Do NOT connect components to electrical supply until directed to do so. Failure to follow this warning could result in serious injury or death as well as equipment damage.

Remove the screws holding covers on and set aside. Remove covers from door. Install new covers on door. Install screws to secure covers in place, as shown in **FIG 5.0**. RE-ENERGIZED the power to the power supply.

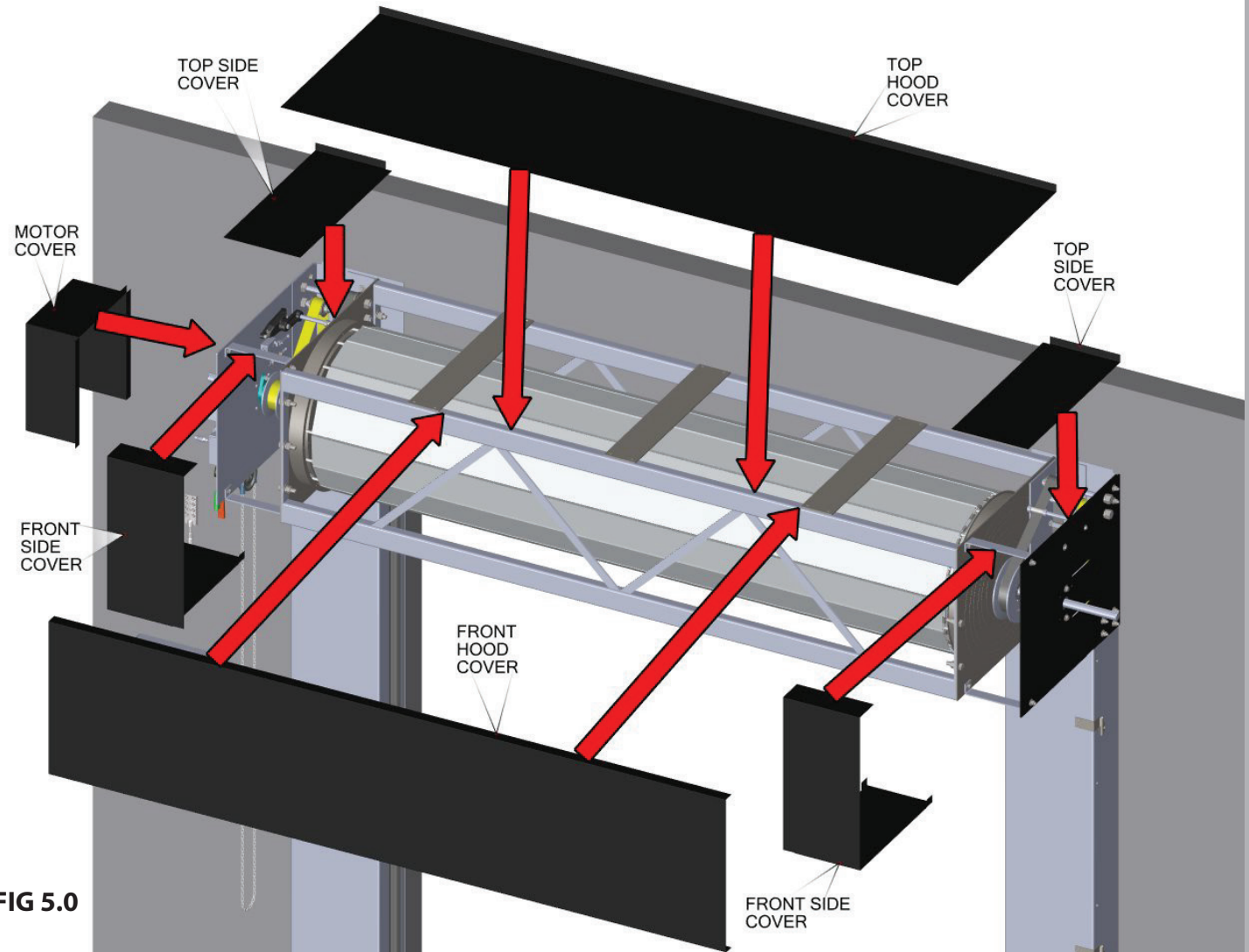


FIG 5.0



CAUTION

Team lift to avoid injury.