

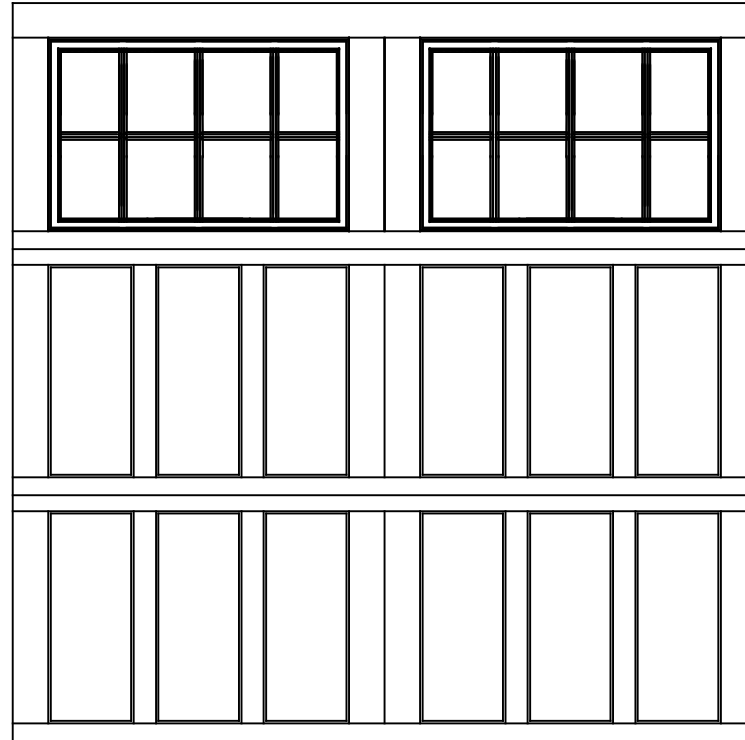


WAYNE-DALTON, A DIVISION OF THE  
OVERHEAD DOOR CORP.

# *EXTERIOR VIEW*

WAYNE-DALTON CONFIDENTIAL PROPRIETARY  
NOT TO BE DUPLICATED OR REPRINTED WITHOUT  
WRITTEN PERMISSION FROM OVERHEAD DOOR CORP.

[WWW.WAYNE-DALTON.COM](http://WWW.WAYNE-DALTON.COM)



7x7 9700 PROVIDENCE DESIGN  
3 SECTION/2 PANEL  
16 LITE SQUARE TOP SECTION SHOWN  
CONSISTS OF (3) 27.73" SECTIONS