

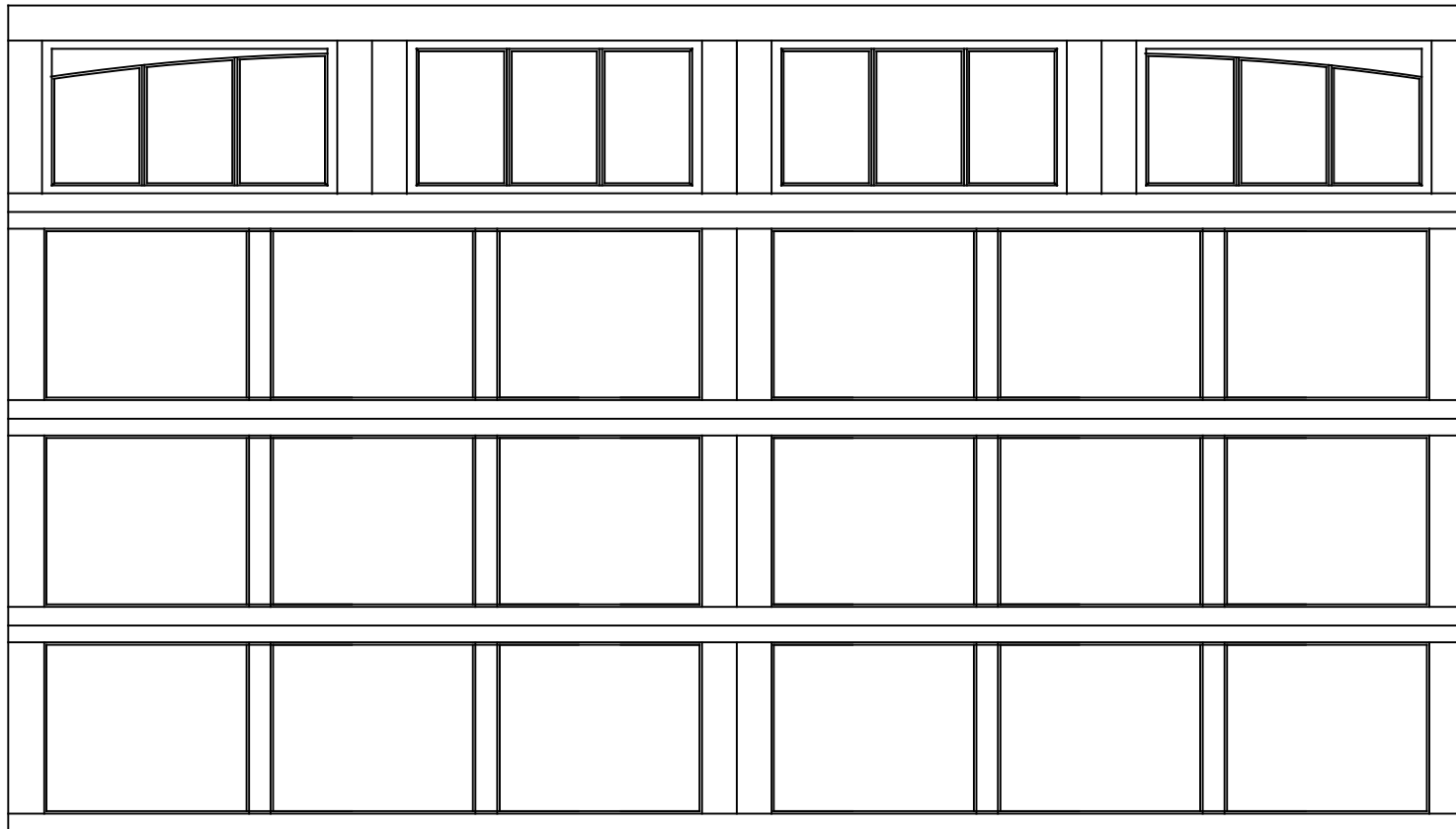


WAYNE DALTON, A DIVISION OF THE
OVERHEAD DOOR CORP.

EXTERIOR VIEW

WAYNE DALTON CONFIDENTIAL PROPRIETARY
NOT TO BE DUPLICATED OR REPRINTED WITHOUT
WRITTEN PERMISSION FROM OVERHEAD DOOR CORP.

WWW.WAYNE-DALTON.COM



14x8 9700 PROVIDENCE DESIGN

4 SECTION/2 PANEL

12 LITE SINGLE ARCH TOP SECTION SHOWN

CONSISTS OF (4) 23.8" SECTIONS