

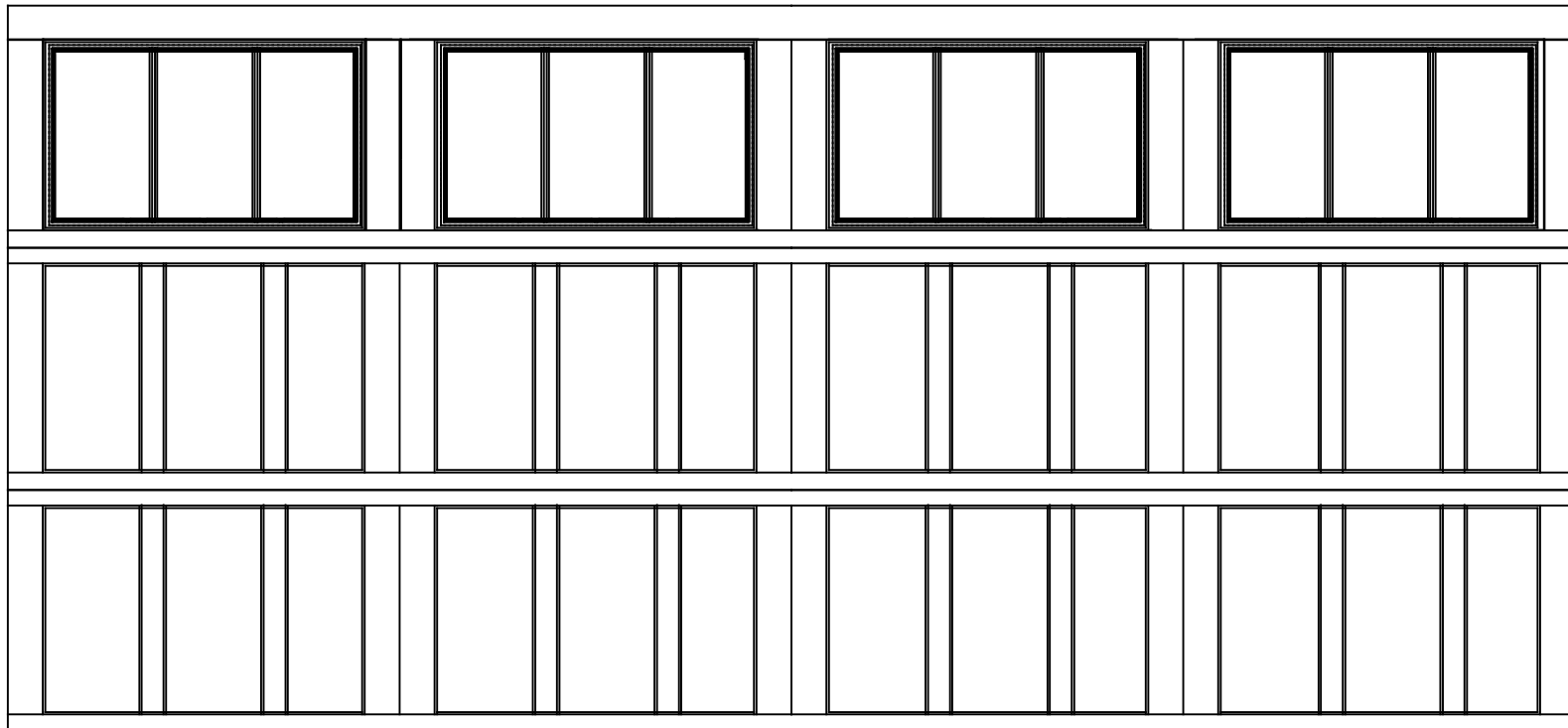


WAYNE-DALTON, A DIVISION OF THE
OVERHEAD DOOR CORP.

EXTERIOR VIEW

WAYNE-DALTON CONFIDENTIAL PROPRIETARY
NOT TO BE DUPLICATED OR REPRINTED WITHOUT
WRITTEN PERMISSION FROM OVERHEAD DOOR CORP.

WWW.WAYNE-DALTON.COM



15'x7' 9700 PROVIDENCE DESIGN

3 SECTION/4 PANEL

12 LITE SQUARE TOP SECTION SHOWN

CONSISTS OF (3) 27.73" SECTIONS