

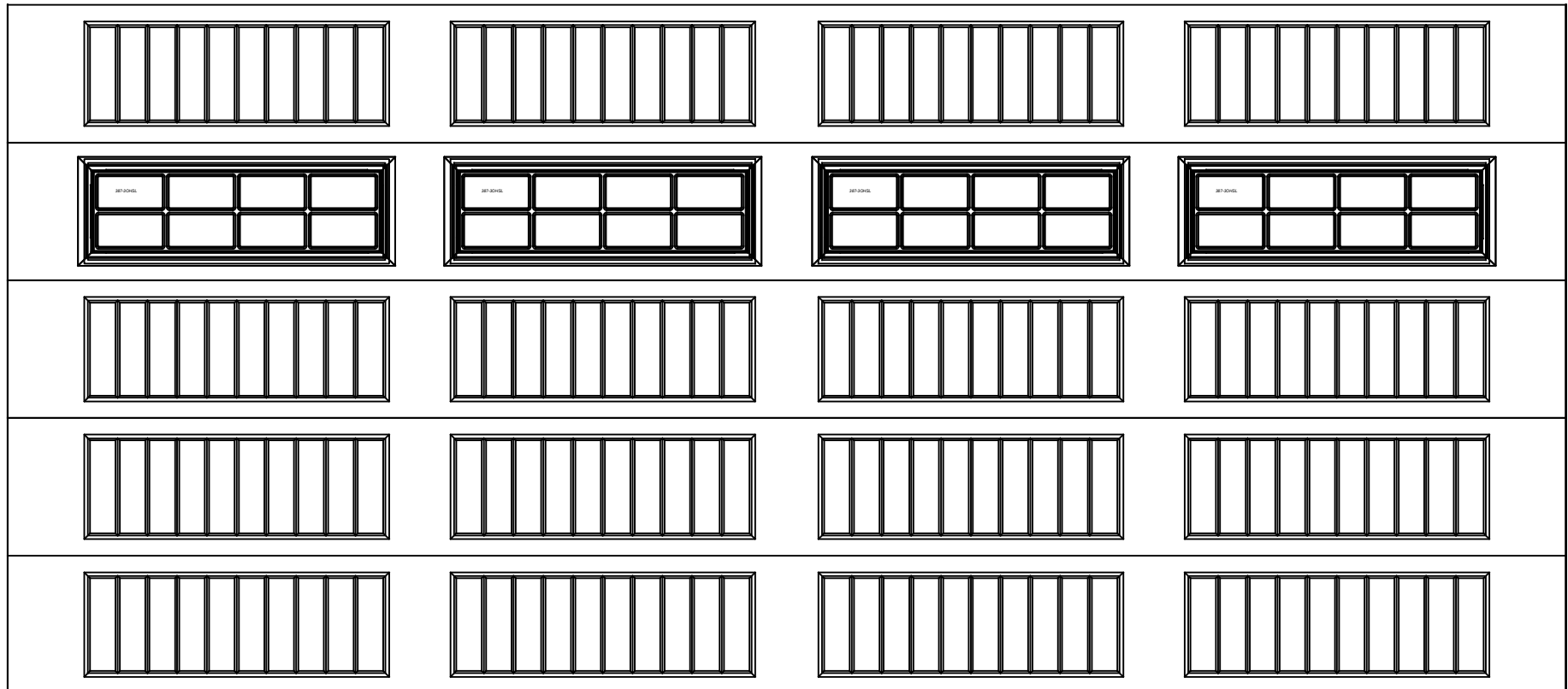


WAYNE DALTON, A DIVISION OF THE  
OVERHEAD DOOR CORP.

# EXTERIOR VIEW

WAYNE DALTON CONFIDENTIAL PROPRIETARY  
NOT TO BE DUPLICATED OR REPRINTED WITHOUT  
WRITTEN PERMISSION FROM OVERHEAD DOOR CORP.

[WWW.WAYNE-DALTON.COM](http://WWW.WAYNE-DALTON.COM)



18 X 8 9100/9605 SONOMA RANCH DESIGN  
5 SECTION/4 PANEL  
STOCKTON IV 8LITE INT4 SECTION SHOWN  
CONSISTS OF (5) 19.1" SECTIONS