

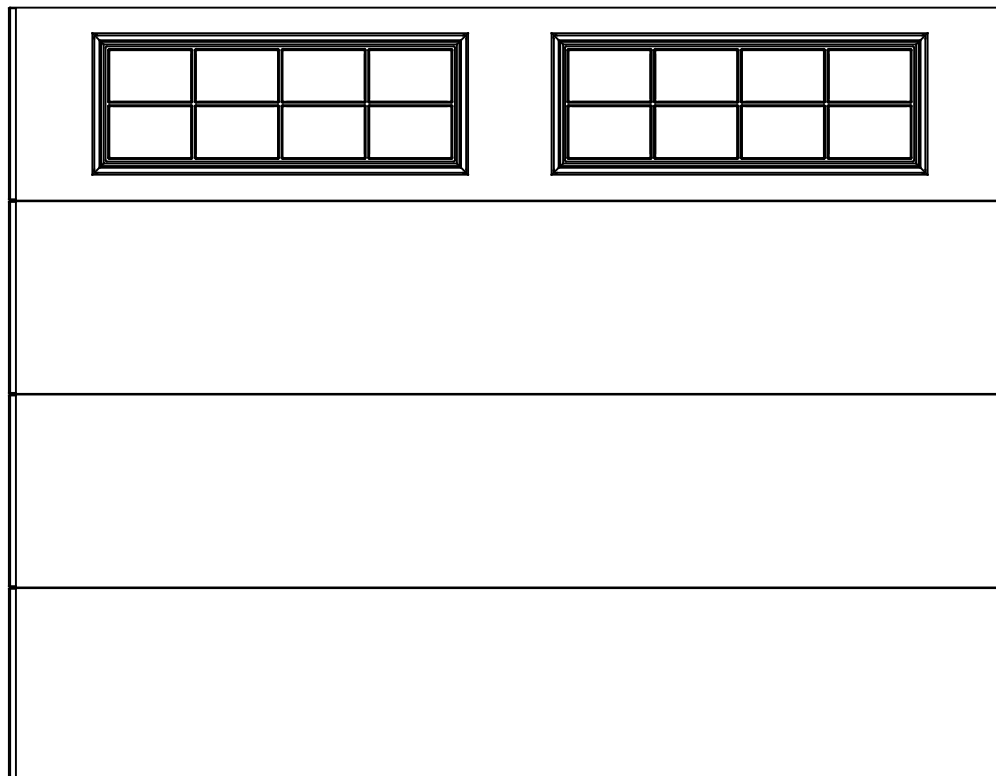


WAYNE DALTON, A DIVISION OF THE
OVERHEAD DOOR CORP.

EXTERIOR VIEW

WAYNE DALTON CONFIDENTIAL PROPRIETARY
NOT TO BE DUPLICATED OR REPRINTED WITHOUT
WRITTEN PERMISSION FROM OVERHEAD DOOR CORP.

WWW.WAYNE-DALTON.COM



9 X 7 9100/9605 FLUSH
4 SECTION/1 PANEL
STOCKTON III TOP SECTION SHOWN
CONSISTS OF (4) 20.8" SECTIONS