

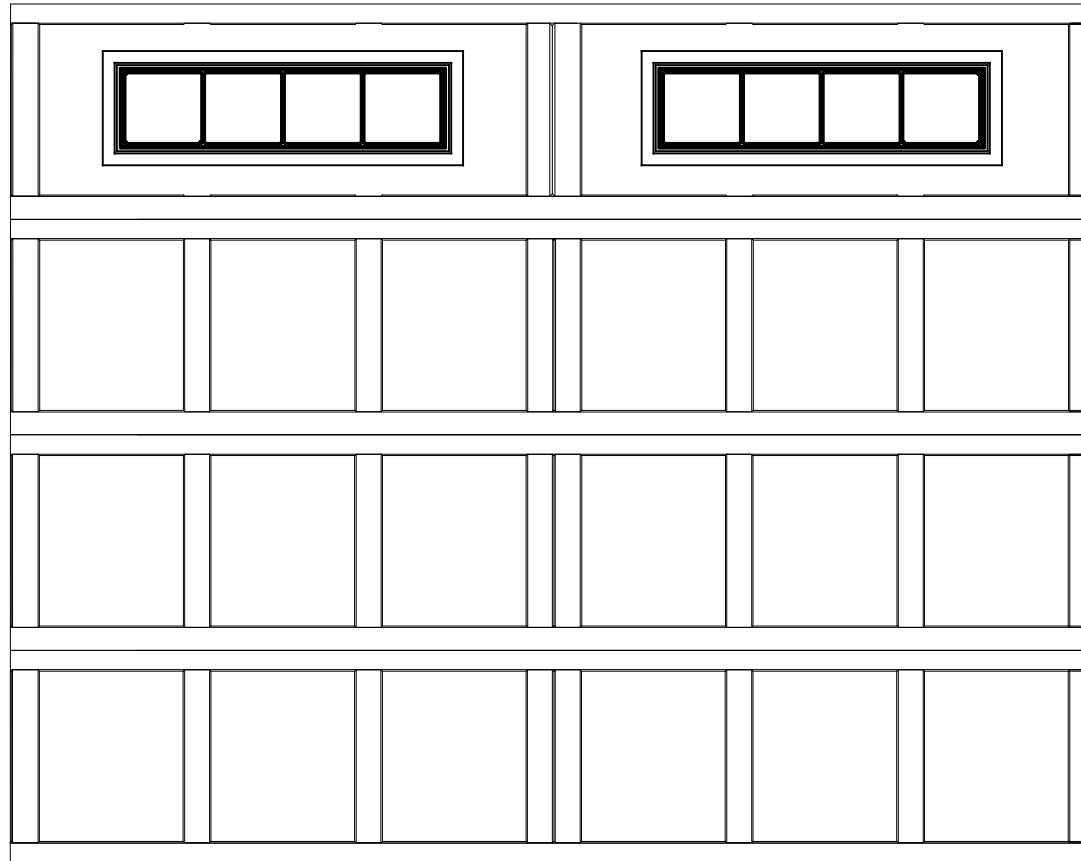


WAYNE-DALTON, A DIVISION OF THE  
OVERHEAD DOOR CORP.

# EXTERIOR VIEW

WAYNE-DALTON CONFIDENTIAL PROPRIETARY  
NOT TO BE DUPLICATED OR REPRINTED WITHOUT  
WRITTEN PERMISSION FROM OVERHEAD DOOR CORP.

[WWW.WAYNE-DALTON.COM](http://WWW.WAYNE-DALTON.COM)



10'x8' 9405 PROVIDENCE

4 SECTION/2 PANEL

STOCKBRIDGE IMPACT RATED GLAZING IN TOP SECTION

CONSISTS OF (4) 23.8" SECTIONS