

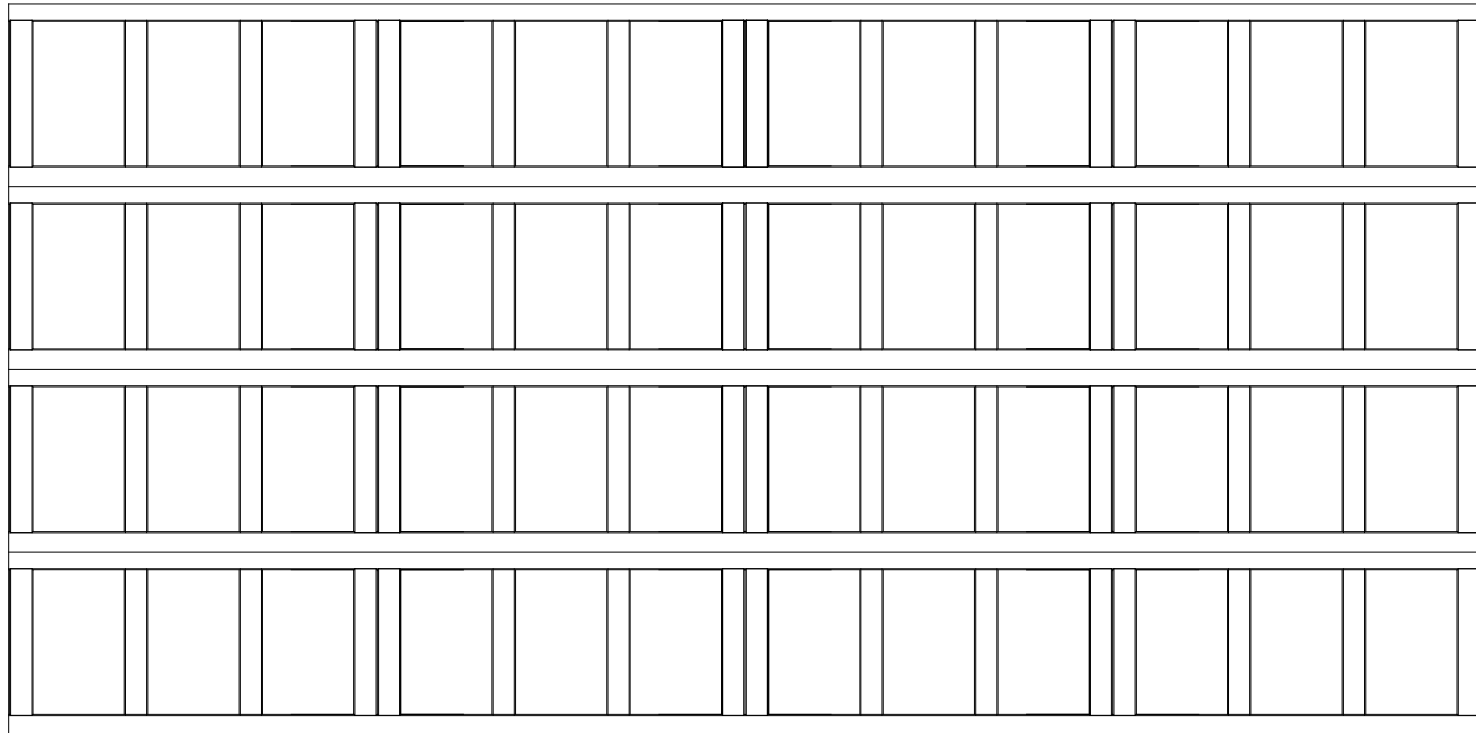


WAYNE-DALTON, A DIVISION OF THE  
OVERHEAD DOOR CORP.

## *EXTERIOR VIEW*

WAYNE-DALTON CONFIDENTIAL PROPRIETARY  
NOT TO BE DUPLICATED OR REPRINTED WITHOUT  
WRITTEN PERMISSION FROM OVERHEAD DOOR CORP.

[WWW.WAYNE-DALTON.COM](http://WWW.WAYNE-DALTON.COM)



16'x8' 9405 PROVIDENCE DESIGN

4 SECTION/4 PANEL

SOLID TOP SECTION SHOWN

CONSISTS OF (4) 23.8" SECTIONS