

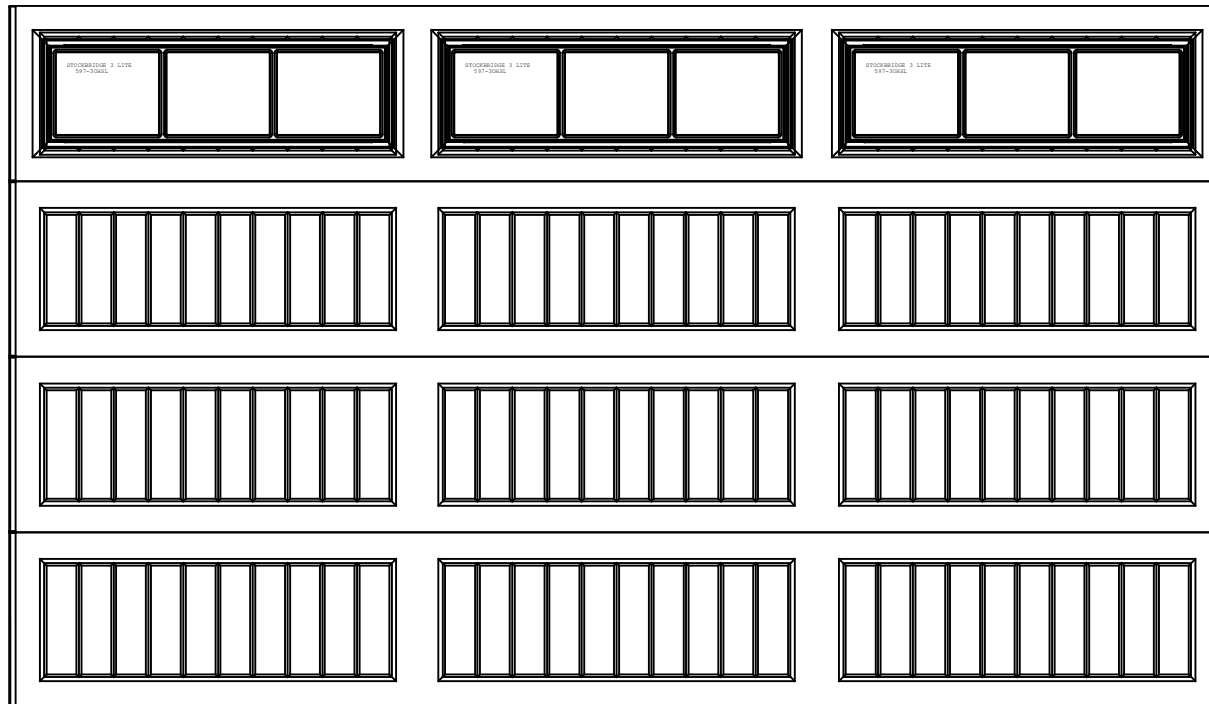


WAYNE DALTON, A DIVISION OF THE  
OVERHEAD DOOR CORP.

# EXTERIOR VIEW

WAYNE DALTON CONFIDENTIAL PROPRIETARY  
NOT TO BE DUPLICATED OR REPRINTED WITHOUT  
WRITTEN PERMISSION FROM OVERHEAD DOOR CORP.

[WWW.WAYNE-DALTON.COM](http://WWW.WAYNE-DALTON.COM)



12'x7' 8300 SONOMA RANCH  
4 SECTION/3 PANEL  
STOCKBRIDGE IV 3LITE TOP SECTION SHOWN  
CONSISTS OF (4) 20.8" SECTIONS