

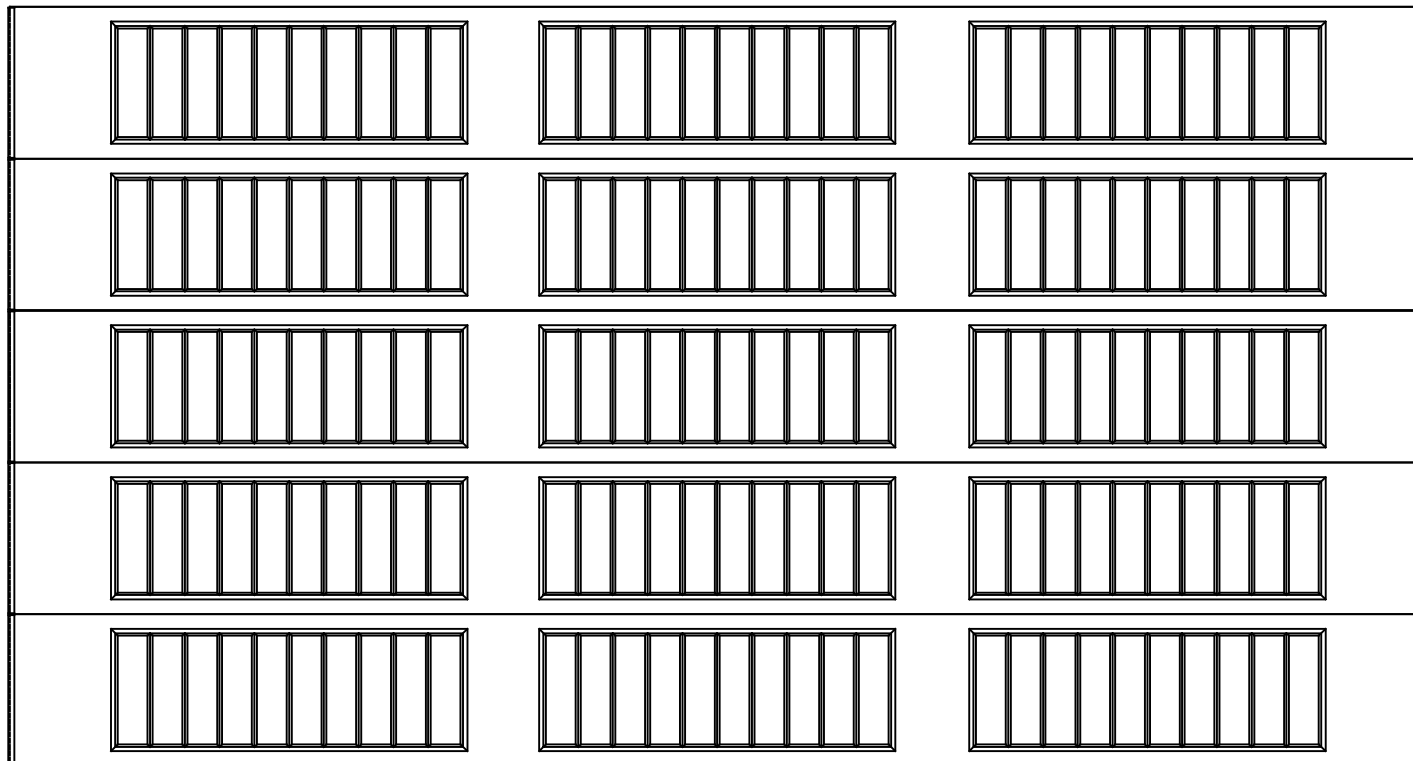


WAYNE DALTON, A DIVISION OF THE  
OVERHEAD DOOR CORP.

# EXTERIOR VIEW

WAYNE DALTON CONFIDENTIAL PROPRIETARY  
NOT TO BE DUPLICATED OR REPRINTED WITHOUT  
WRITTEN PERMISSION FROM OVERHEAD DOOR CORP.

[WWW.WAYNE-DALTON.COM](http://WWW.WAYNE-DALTON.COM)



14'x7'6" 8300 SONOMA RANCH

5 SECTION/3 PANEL

SOLID TOP SECTION SHOWN

CONSISTS OF (5) 18.0" SECTIONS