

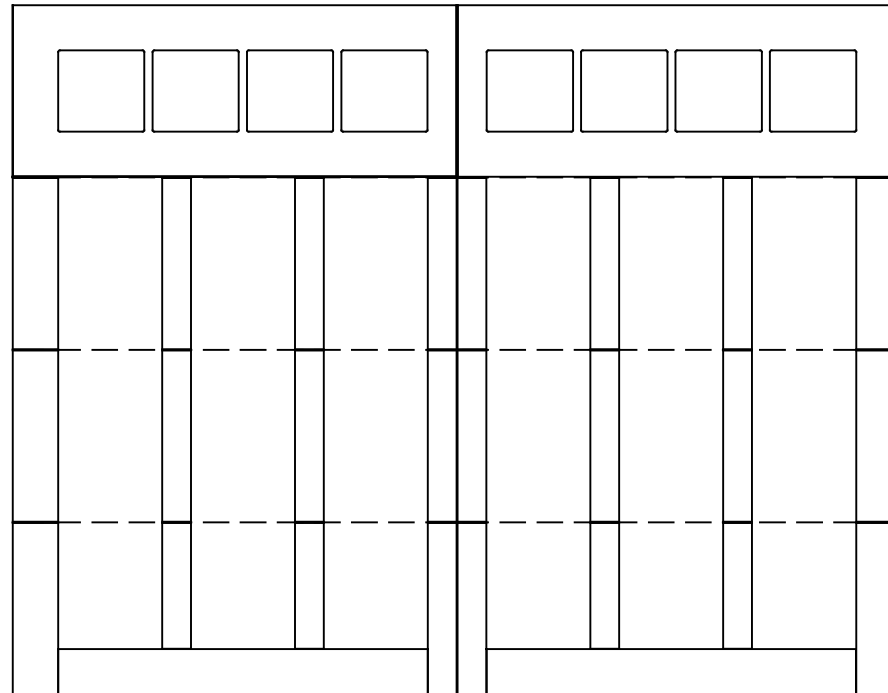


WAYNE-DALTON, A DIVISION OF THE
OVERHEAD DOOR CORP.

EXTERIOR VIEW

WAYNE-DALTON CONFIDENTIAL PROPRIETARY
NOT TO BE DUPLICATED OR REPRINTED WITHOUT
WRITTEN PERMISSION FROM OVERHEAD DOOR CORP.

WWW.WAYNE-DALTON.COM



9x7 6600 BRUNSWICK
4 SECTION/2 PANEL
ROUTED STOCKBRIDGE TOP SECTION SHOWN
CONSISTS OF (4) 20.8" SECTIONS