

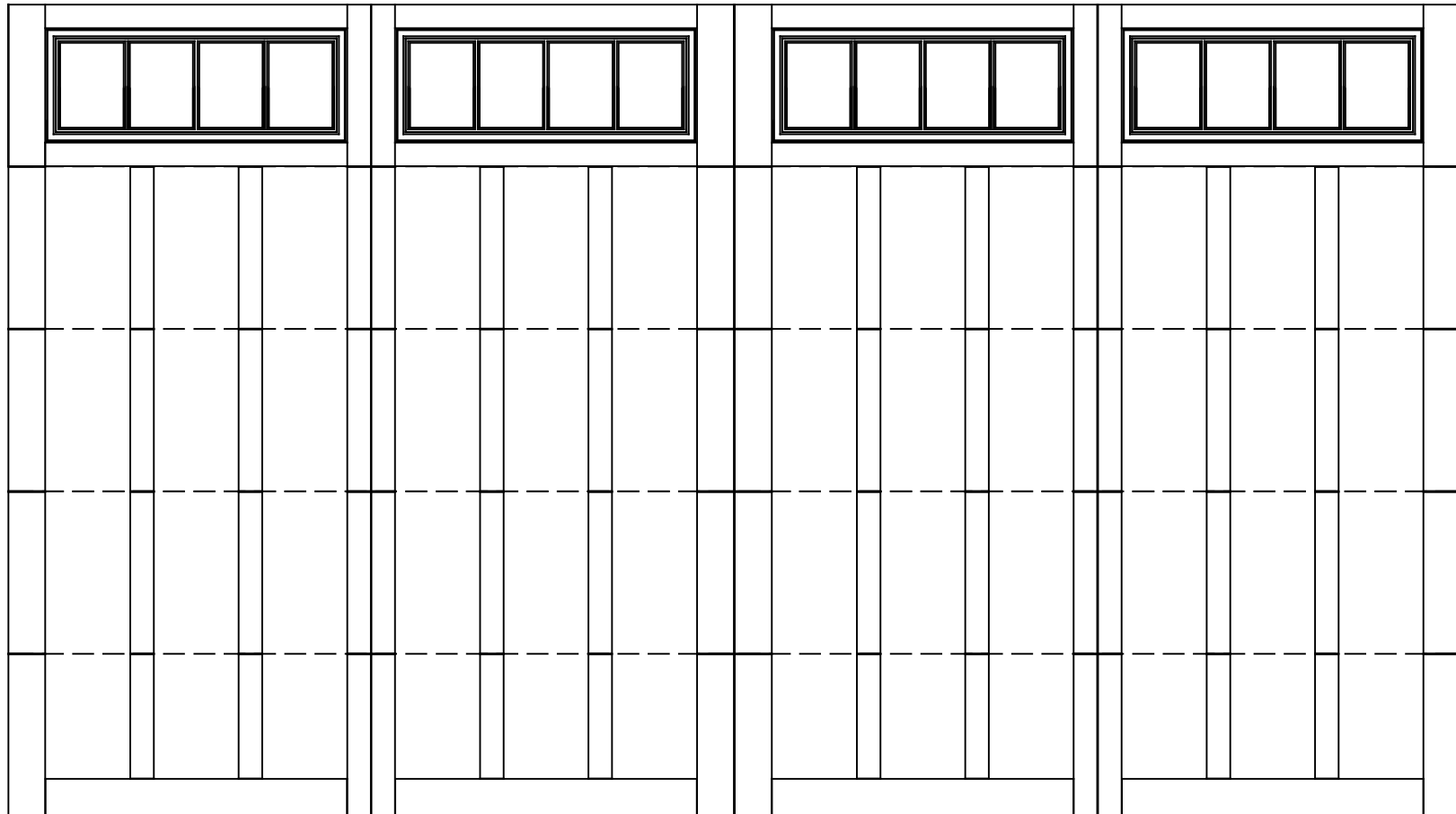


WAYNE DALTON, A DIVISION OF THE
OVERHEAD DOOR CORP.

EXTERIOR VIEW

WAYNE-DALTON CONFIDENTIAL PROPRIETARY
NOT TO BE DUPLICATED OR REPRINTED WITHOUT
WRITTEN PERMISSION FROM OVERHEAD DOOR CORP.

WWW.WAYNE-DALTON.COM



18x10 6600 BRUNSWICK
5 SECTION/4 PANEL
FRAMED STOCKBRIDGE TOP SECTION
CONSISTS OF (5) 24.0" SECTIONS