

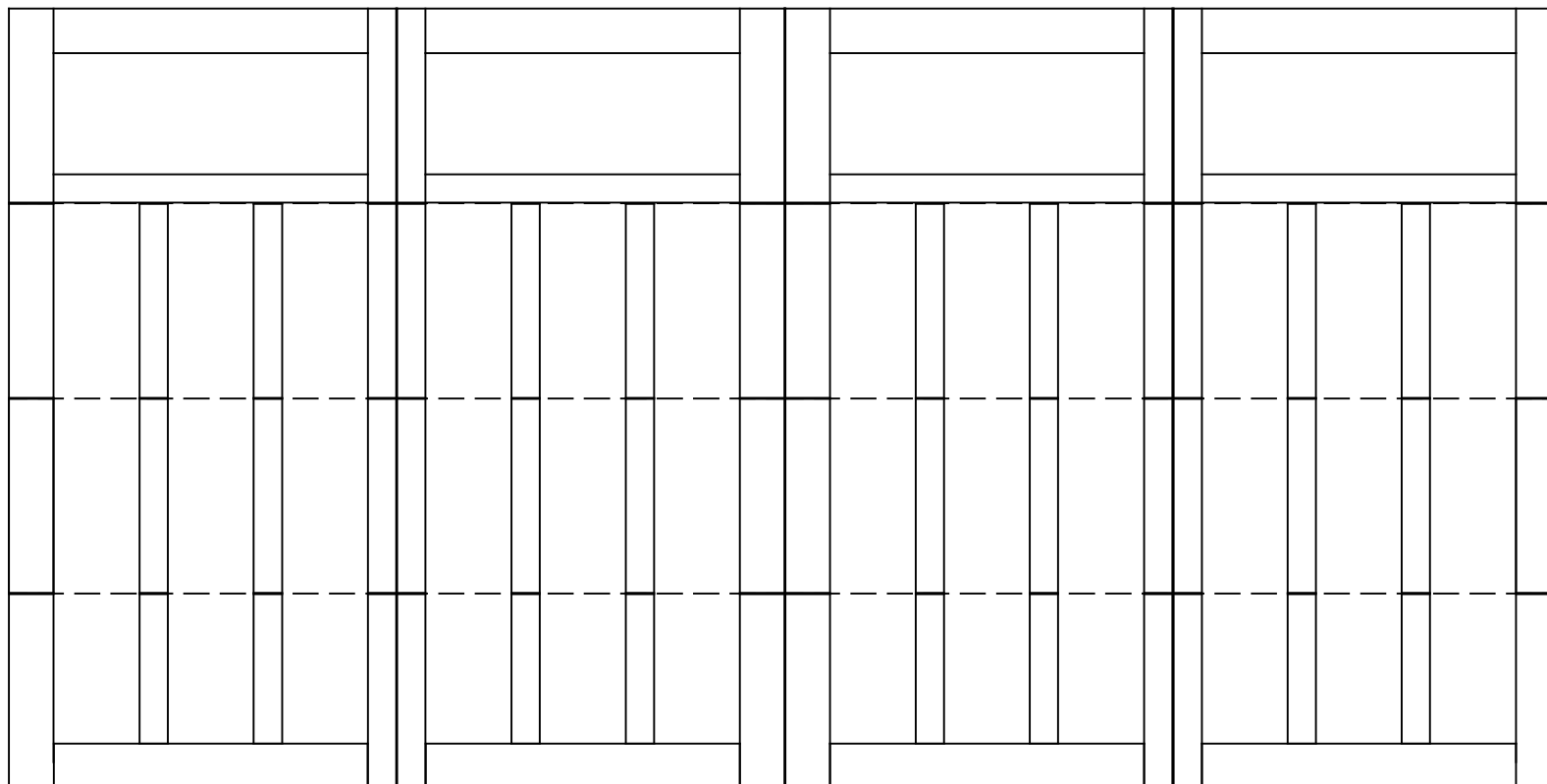


WAYNE-DALTON, A DIVISION OF THE
OVERHEAD DOOR CORP.

EXTERIOR VIEW

WAYNE-DALTON CONFIDENTIAL PROPRIETARY
NOT TO BE DUPLICATED OR REPRINTED WITHOUT
WRITTEN PERMISSION FROM OVERHEAD DOOR CORP.

WWW.WAYNE-DALTON.COM



16x8 6600 BRUNSWICK
4 SECTION/4 PANEL
SOLID SQUARE TOP SECTION SHOWN
CONSISTS OF (4) 24.0" SECTIONS