

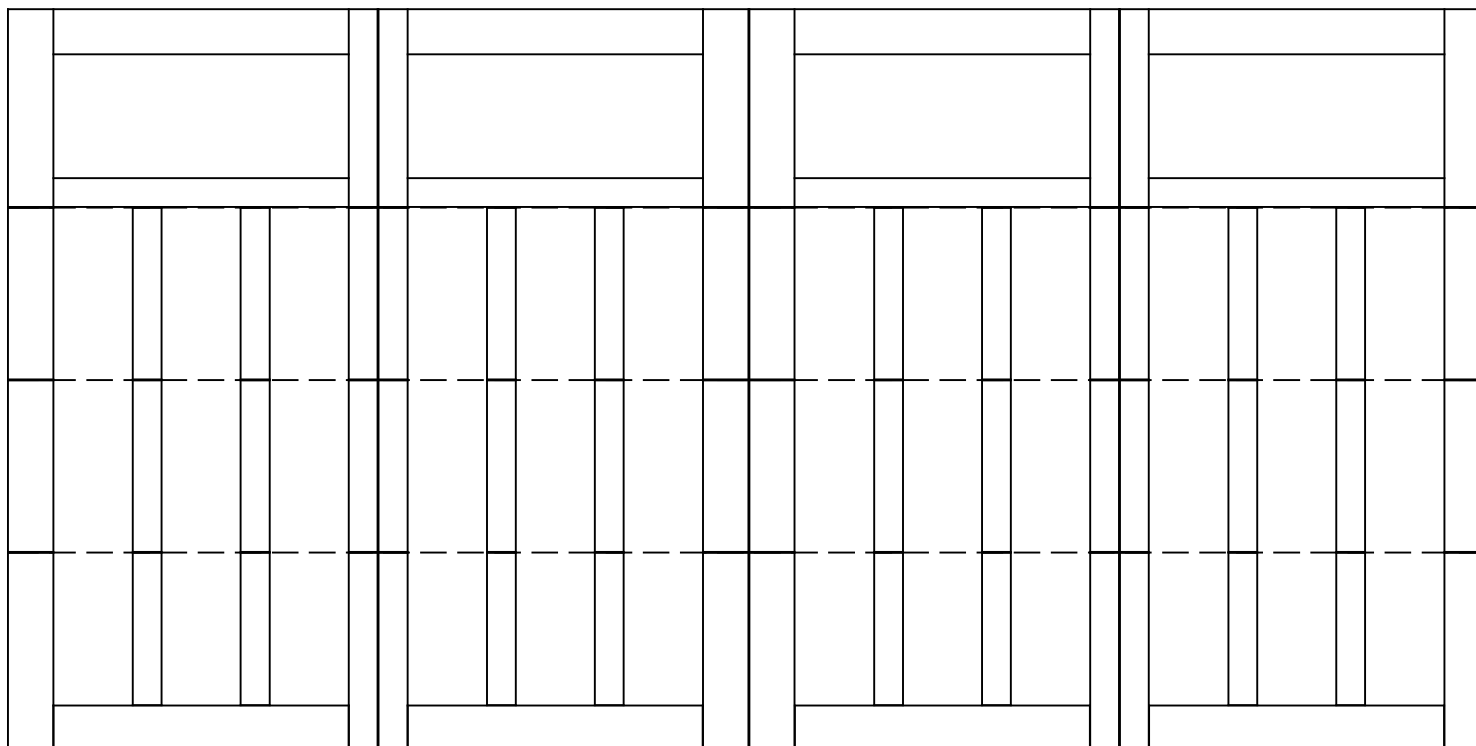


WAYNE-DALTON, A DIVISION OF THE
OVERHEAD DOOR CORP.

EXTERIOR VIEW

WAYNE-DALTON CONFIDENTIAL PROPRIETARY
NOT TO BE DUPLICATED OR REPRINTED WITHOUT
WRITTEN PERMISSION FROM OVERHEAD DOOR CORP.

WWW.WAYNE-DALTON.COM



15'x7'6" 6600 BRUNSWICK
4 SECTION/4 PANEL
SOLID SQUARE TOP SECTION SHOWN
CONSISTS OF (2) 20.8" SECTIONS AND (2) 24.0" SECTIONS