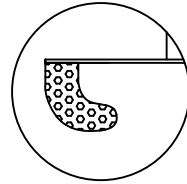


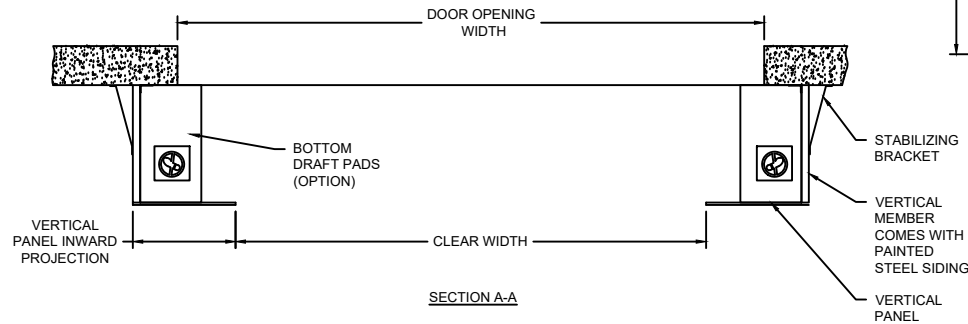
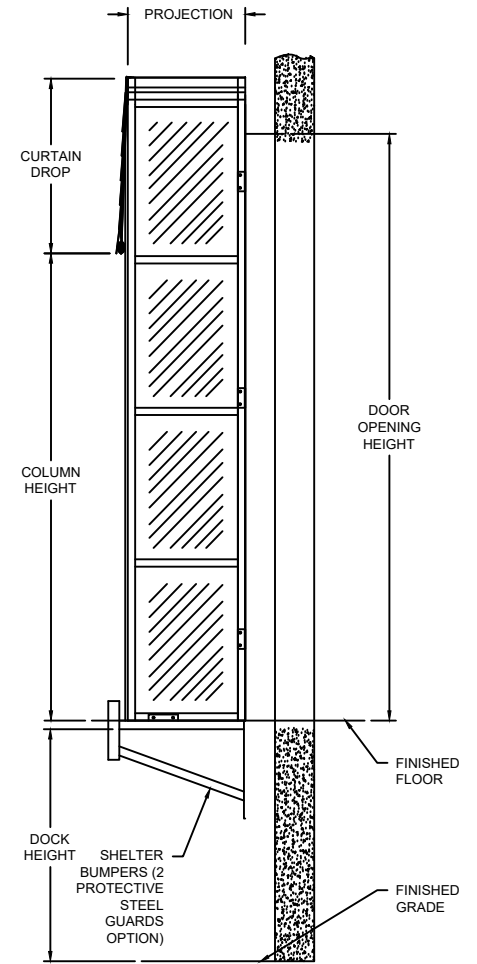
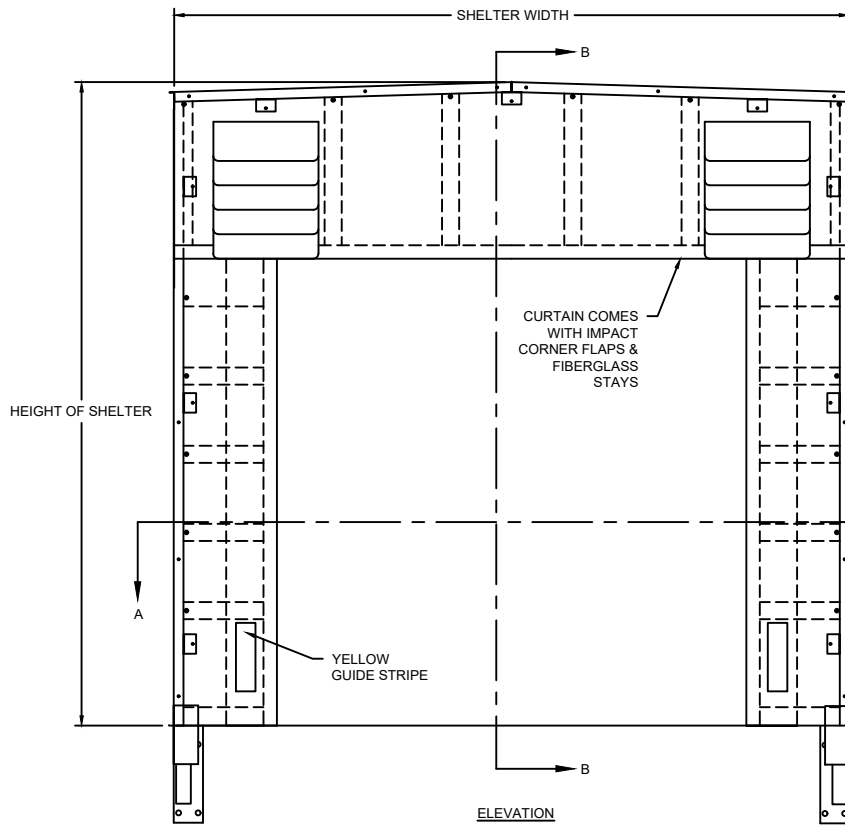
DETAIL
ENCASOR VERTICAL PANEL



DETAIL
RAP TIGHT VERTICAL PANEL

OPTIONS

| | |
|------------------------|--|
| OPENING WIDTH | |
| OPENING HEIGHT | |
| SHELTER WIDTH | |
| SHELTER HEIGHT | |
| PANEL OPTIONS | <input type="checkbox"/> VERTICAL PANEL INWARD PROJECTION (18" - 35") |
| CURTAIN OPTIONS | <input type="checkbox"/> 36" CURTAIN DROP <input type="checkbox"/> ADD CURTAIN DROP 1" INCREMENTS (60" MAX.) |
| VERTICAL PANEL OPTIONS | <input type="checkbox"/> WITH FIBERGLASS STAYS <input type="checkbox"/> WITH DOOR GAP SEAL <input type="checkbox"/> WITH PREMIUM DOOR SEAL |



FIXED DOCK SHELTER

MODEL TX40WD

NOTES:

1. MADE OF FIRE RESISTANT FABRIC AND AVAILABLE IN MULTIPLE WEIGHTS INCLUDING A PREMIUM 40 OZ FABRIC THAT HAS SIX TIMES MORE ABRASION RESISTANCE THAN STANDARD FABRIC

| | | |
|----------|-------|---------------------|
| DWG. NO. | DATE: | Wayne Dalton |
| SHEET | BY: | |