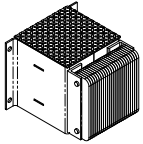
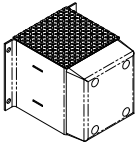


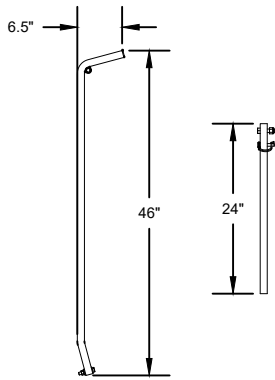
BUMPER
STEEL FACED



BUMPER
LAMINATED RUBBER



BUMPER
MOLDED RUBBER (STANDARD)



OPERATING HANDLE AND
MAINTENANCE BRACE

OPTIONS

DOOR WIDTH

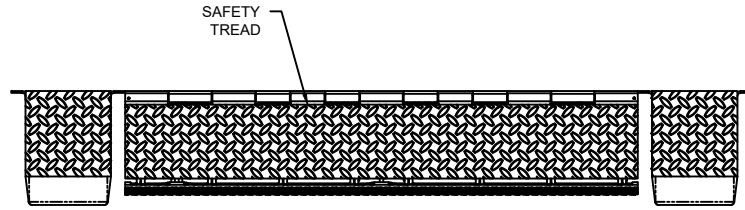
DOOR HEIGHT

SIZE OPTIONS
 66" (E66R)
 72" (E72R)

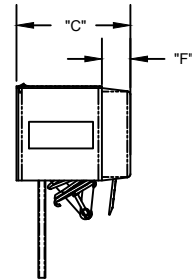
BUMPER
OPTIONS
 MOLDED RUBBER
 LAMINATED RUBBER
 STEEL FACED

NOTES:

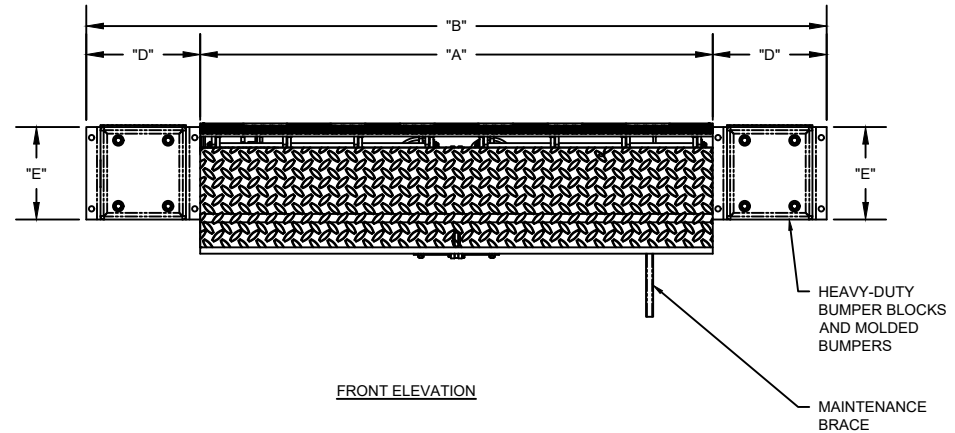
1. TEXTURED POWDER COATED DIAMOND PLATED SURFACE PROVIDES ENHANCED TRACTION AND INCREASE NON-SLIP PROTECTION.
2. COMPLIANT WITH ANSI MH30.1-2022 WHICH INCLUDES RIGOROUS LOAD TESTING REQUIREMENTS
3. WEIGHT CAPACITY: 20,000 - 30,000 LBS.



TOP VIEW



SIDE VIEW



FRONT ELEVATION

EDGE OF DOCK LEVELER DIMENSIONS

MODEL	DECK WIDTH (INCH)	OVERALL WIDTH (INCH)	BUMPER ASSEMBLY PROJECTION		BOX WIDTH (INCH)	BOX HEIGHT (INCH)	BUMPER THICKNESS (INCH)
			"C" (INCH)				
			15" LIP	17" LIP			
E66R	66	98	16	17	16	13	4
E72R	72	104	16	17	16	13	4

EDGE OF DOCK LEVELER

MODELS E66WD & E72WD

DWG. NO.	DATE: 08/10/2025	Wayne Dalton
SHEET	BY:	