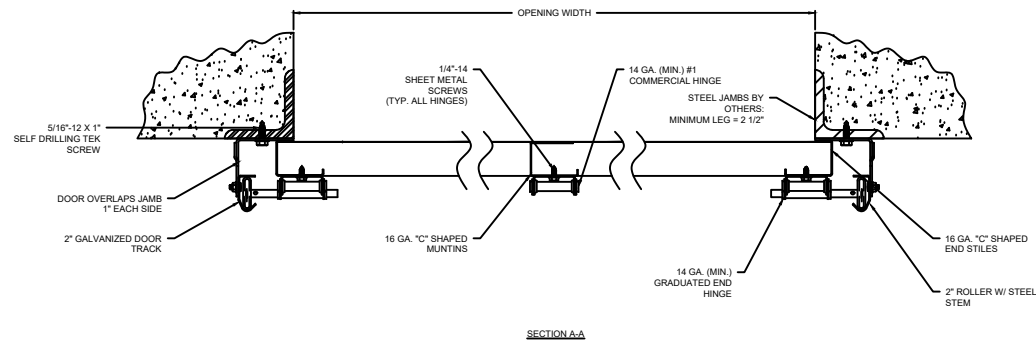
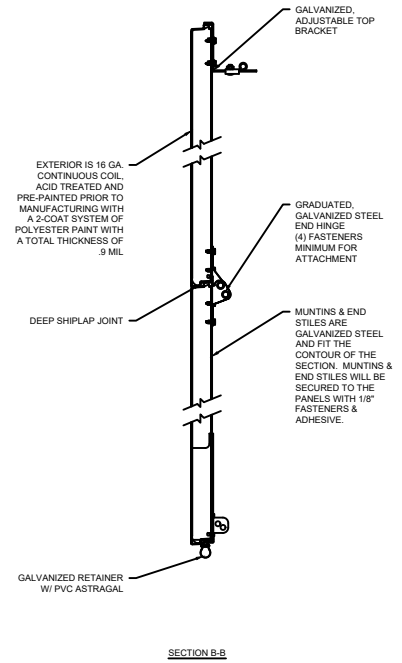
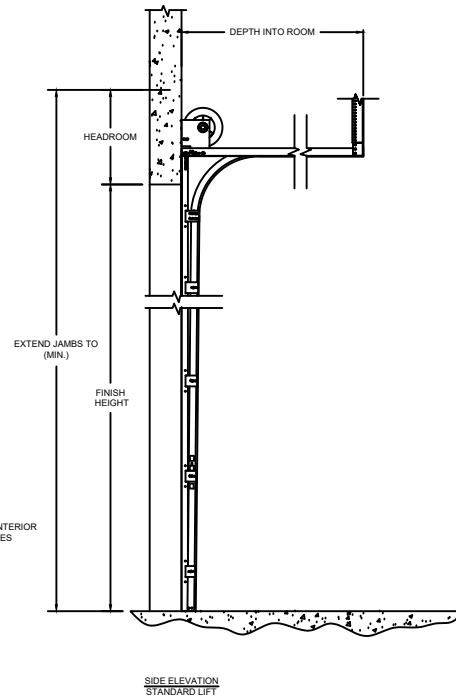
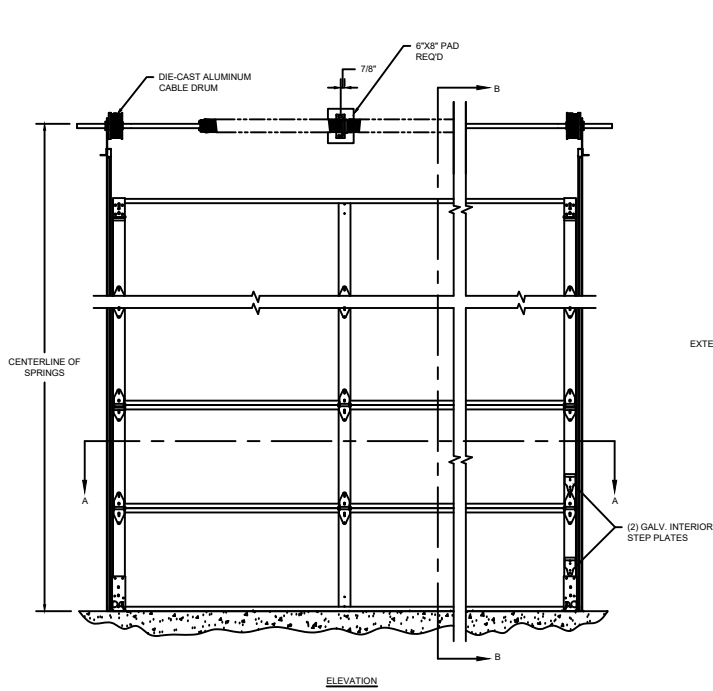


MODEL	STANDARD MAX. VALUES	
	WIDTH	HEIGHT
216	28' 2"	18' 1"



OPTIONS	
OPENING WIDTH	
OPENING HEIGHT	
DOOR TRACK SIZE	<input type="checkbox"/> 2" <input type="checkbox"/> 3"
END STILES	<input type="checkbox"/> SINGLE <input type="checkbox"/> DOUBLE
WINDOW OPTIONS	<input type="checkbox"/> NO WINDOW <input type="checkbox"/> FULL-VIEW LITES <input type="checkbox"/> 24" X 7" VISION LITE
SEAL OPTIONS	<input type="checkbox"/> JAMB SEAL <input type="checkbox"/> STANDARD BOTTOM SEAL <input type="checkbox"/> TOP SEAL <input type="checkbox"/> ELECTRIC SAFETY EDGE <input type="checkbox"/> PNEUMATIC SAFETY EDGE
LOCK OPTIONS	<input type="checkbox"/> SLIDE LOCK <input type="checkbox"/> UNILOCK

COMPONENT	MATERIAL	OPERATION	NOTES:
SECTIONS	16 GA. ROLL-FORMED GALVANIZED	MANUAL PUSH UP	- WARRANTY: 1-YEAR LIMITED
CENTER/END STILES	16 GA. STEEL		
HARDWARE	GALVANIZED STEEL		
WEATHERSTRIP	FLEXIBLE PVC		

SECTIONAL STEEL

216 SECTIONAL STEEL DOORS (NON-INSULATED)

DWG. NO.	DATE:	Wayne Dalton.
SHEET	BY:	