

## MODEL 800

ROLLING SERVICE DOORS



Model 800, Beige finish

### ROLLING SERVICE DOORS TO MEET YOUR MOST DEMANDING AND RIGOROUS APPLICATIONS

The Wayne Dalton Model 800 Rolling Service Door is designed to meet the tough requirements of virtually any commercial or industrial application. Model 800 offers flexibility in substrate materials with choices of galvanized or primed steel, stainless steel or aluminum.

Color options range from our standard four factory finish colors to a full range of approximately 200 powder coat choices.

- » SIZES UP TO 40' WIDE OR 40' HIGH
- » MAX STEEL GAUGE = 16
- » FLAT AND CURVED 3" SLATS AVAILABLE
- » WIND LOAD UP TO 55 PSF

# MODEL 800

## STANDARD FEATURES OVERVIEW

### CONSTRUCTION

MAX WIDTH*	40' (12,192 mm)
MAX HEIGHT*	40' (12,192 mm)
MOUNTING	Face mount; between jambs.
OPERATION	Manual push-up, unless size requires chain hoist
CURTAIN	3" galvanized steel curved slats (#4 profile), primed gray, white, beige or brown; 22-gauge steel with alternating endlocks
LOCKING	Chain holder, suitable for padlocking, on chain operated doors
BOTTOM BAR	Galvanized steel double angle with weatherstrip
GUIDES	Roll-formed steel channel; factory painted black
BRACKETS	3/16" steel plates with permanently sealed ball bearing, factory painted black
COUNTERBALANCE	Steel pipe, factory painted black, of adequate size to restrict a maximum deflection of .033" per linear foot. Oil tempered, 20,000 cycle helical springs
HOOD	24-gauge galvanized steel round hood; primed gray, white, beige or brown
WIND LOAD	+/- 20 psf standard

### WARRANTY

TERMS	Two (2) year Limited
-------	----------------------

### OPTIONS

- Operation: Crank (awning, wall), chain hoist, motor, through wall
- Slat options: 3" flat slat, perforated or fenestrated flat slat, 6" curved slat, open fenestrations, vision lites, pass door
- Curtain options: Steel, stainless steel, aluminum
- Curtain finish: G-90 galvanized bare or painted gray stainless steel #4, aluminum anodized finishes, powdercoat (RAL and custom)
- Locking: Slide bolts, cylinder, Best lock, thumb turns
- Bottom bar: Stainless steel double angle, structural steel angle construction (galvanized steel only), extruded aluminum, sloped
- Bottom edge: Astragal, pneumatic or electric sensing edge
- Hood: 22-gauge hood option, square hood option
- Spring: Up to 200,000 cycle, options available dependent on door size and weight
- Guides: Structural three angle: galvanized steel, stainless; hot dipped galvanized (structural steel angle only)
- Brackets finish: Galvanized (hot dipped), stainless steel #4, powder coat (RAL and custom)
- Perimeter seals: Angled guide brush seal, clip-on vinyl guide seal, exterior lintel weather seal, interior weather baffle
- Wind load: Minimum of +/- 20 psf up to +/- 55 psf; options available to meet up to Dade County – Florida Building Commission High Velocity Hurricane Zone (FBC HVHZ)
- Other options: Wind locks alternating or continuous with windbar, end covers, fascia, drop stop device

\*Maximum height and width are independent of each other and may vary based on slat profile, material and gauge.

**Popular in both interior and exterior applications, the Wayne Dalton Model 800 Rolling Service Door features a galvanized, pre-painted curtain of minimum 22-gauge steel.**

Model 800 has a standard wind load rating of 20 psf. Optional wind load ratings of up to 55 psf are available to cover Florida Building Code (FBC) and Dade County wind load requirements.

### MATERIALS AND CONSTRUCTION

Wayne Dalton's Model 800 Rolling Service Doors are composed of curved or flat-faced slats that provide a natural water-shed, helping to reduce corrosion.

The slats are designed with free-acting interlocking joints that permit easy articulation when the door coils.

Model 800 features a strong double-angle bottom bar that reinforces the lower edge of the curtain against wind pressure and permits varied lock, astragal, and safety edge options.

This bottom bar is designed for easy installation and does not require fasteners protruding into the guide openings, so the bottom bar does not interfere with door operation.

Bottom bar finishes are available in primed black finish, stainless steel #4, powder coat (RAL and custom); hot dipped galvanized (double angle only), mill, clear or bronze anodized aluminum.

### FINISH OPTIONS



White      Gray      Beige      Brown

Note: 18 ga. and 20 ga. doors are only available in Gray.

Approximately 200 RAL Powder Coat Finishes also available



Actual colors may vary from brochure due to fluctuations in the printing process. Always request a color sample from your Wayne Dalton dealer for accurate color matching.

# ROLLING SERVICE DOORS

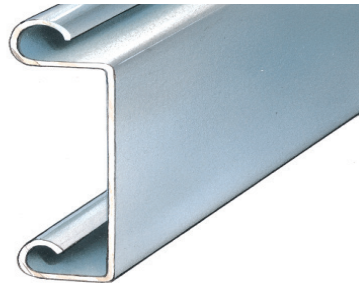


Model 800, Aluminum finish

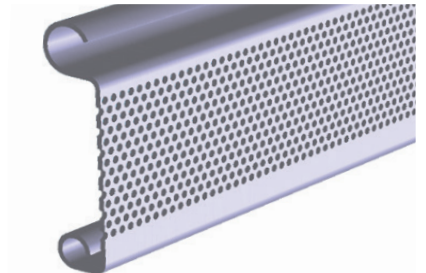
## SLAT PROFILES



No. 4 — Curved-faced single crown slat available in up to 16-gauge steel, up to 18-gauge stainless steel, or up to 14-gauge B&S aluminum. Depth of crown:  $\frac{7}{8}$ ",  $2\text{-}\frac{5}{8}$ " on centers.



No. 14 — Flat-faced slat available in up to 16-gauge steel, up to 18-gauge stainless steel, or up to 14-gauge B&S aluminum. Depth of crown:  $\frac{3}{4}$ ",  $2\text{-}\frac{7}{16}$ " on centers.



Secur-Vent® — Perforated slat provides optimal security and ventilation. Slat consists of  $\frac{1}{16}$ " diameter holes offering 17% open area over length of each slat. Available in No. 14 flat slat up to 22' wide x 20' high (available in 20-gauge steel only).



No. 4 slat



No. 14 slat, shown with a Pass Door



Secur-Vent®

## MODEL 800 (FACE MOUNTED)

WIDTH A	HEIGHT B (OPENING HEIGHT)											
	9'0"			TO 14'0"			TO 18'0"			TO 18'0"		
	BRACKET SIZE	SIDE ROOM		BRACKET SIZE	SIDE ROOM		BRACKET SIZE	SIDE ROOM		BRACKET SIZE	SIDE ROOM	
	X & Y	R	L	X & Y	R	L	X & Y	R	L	X & Y	R	L
<b>CHAIN HOIST OPERATED</b>												
TO 20'0"	18-1/2"	8"	6"	22"	8"	6"	24"	8"	6"	26"	8"	6"
20'0" TO 25'0"	18-1/2"	8"	6"	22"	8"	6"	24"	8"	6"	26"	8"	6"
25'0" TO 28'0"	18-1/2"	8"	6"	22"	8"	6"	24"	8"	6"	26"	8"	6"
<b>MOTOR OPERATED</b>												
TO 20'0"	20"	8"	6"	22"	8"	6"	24"	8"	6"	26"	8"	6"
20'0" TO 25'0"	20"	8"	6"	22"	8"	6"	24"	8"	6"	26"	8"	6"
25'0" TO 28'0"	20"	8"	6"	22"	8"	6"	24"	8"	6"	26"	8"	6"
<b>CRANK OPERATED - CONSULT FACTORY</b>												

## MODEL 800 (BETWEEN JAMBS, UNDER LINTEL)

WIDTH A	HEIGHT B (OPENING HEIGHT)											
	9'0"			TO 14'0"			TO 18'0"			TO 18'0"		
	BRACKET SIZE	SIDE ROOM		BRACKET SIZE	SIDE ROOM		BRACKET SIZE	SIDE ROOM		BRACKET SIZE	SIDE ROOM	
	X & Y	R	L	X & Y	R	L	X & Y	R	L	X & Y	R	L
<b>CHAIN HOIST OPERATED</b>												
TO 20'0"	18-1/2"	9-1/16"	7-1/16"	22"	9-1/16"	7-1/16"	24"	9-1/16"	7-1/16"	26"	9-1/16"	7-1/16"
20'0" TO 25'0"	18-1/2"	9-1/16"	7-1/16"	22"	9-1/16"	7-1/16"	24"	9-1/16"	7-1/16"	26"	9-1/16"	7-1/16"
25'0" TO 28'0"	18-1/2"	9-1/16"	7-1/16"	22"	9-1/16"	7-1/16"	24"	9-1/16"	7-1/16"	26"	9-1/16"	7-1/16"
<b>MOTOR OPERATED</b>												
TO 20'0"	20"	9-1/16"	7-1/16"	22"	9-1/16"	7-1/16"	24"	9-1/16"	7-1/16"	26"	9-1/16"	7-1/16"
20'0" TO 25'0"	20"	9-1/16"	7-1/16"	22"	9-1/16"	7-1/16"	24"	9-1/16"	7-1/16"	26"	9-1/16"	7-1/16"
25'0" TO 28'0"	20"	9-1/16"	7-1/16"	22"	9-1/16"	7-1/16"	24"	9-1/16"	7-1/16"	26"	9-1/16"	7-1/16"
<b>CRANK OPERATED - CONSULT FACTORY</b>												

NOTE: Dimensions are for general reference only and not for construction purposes.

## Architect Resource Center

Visit [wayne-dalton.com/architect-resource-center](http://wayne-dalton.com/architect-resource-center) to find our Architect Resource Center. In this tool, you will quickly find all of the specifications, drawings and documents you need to complete your project.

# Wayne Dalton™

DISTRIBUTED BY:

2501 S. State Hwy. 121 Bus., Ste 200  
Lewisville, TX 75067

[wayne-dalton.com](http://wayne-dalton.com)

