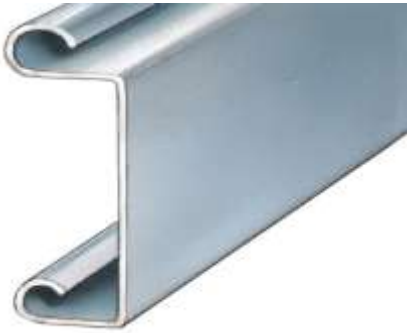


## Model 800/800C ADV Slat Profiles

### No. 14 Slat Profile



**Standard:**

- Flat slat, 22-gauge steel

**Available:**

- Up to 16-gauge steel
- Up to 18-gauge stainless steel
- Up to 14-gauge aluminum (mill, clear, or bronze anodized)

Pitch\*: 2.45"

### No. 34 Slat Profile (800C ADV)



**Standard:**

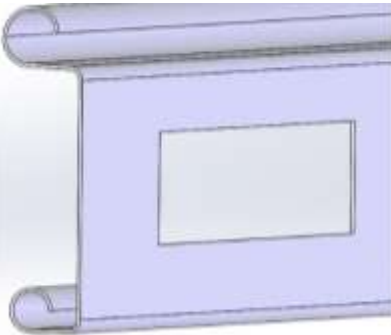
- 22-gauge front; 24-gauge back cover
- Polyurethane foamed-in-place insulation

**Available:**

- Up to 18-gauge steel or stainless steel front
- 16-gauge aluminum front
- Vision slats

Pitch\*: 2.45"

### No. 14 Slat Profile – Ventilated



**Available:**

- Ventilated (fenestrated) flat-faced slat with 5" x 3/4" rectangular holes evenly spaced across slat; or per spec
- Offers 16.5 to 17% open area over slat
- Max of 20 ventilated slats per curtain
- 20 psf maximum
- 22, 20 or 18-gauge steel or stainless steel
- Vision lites

Pitch\*: 2.45"

\*Pitch is the distance between the top and bottom rotations of the slat (articulation distance).