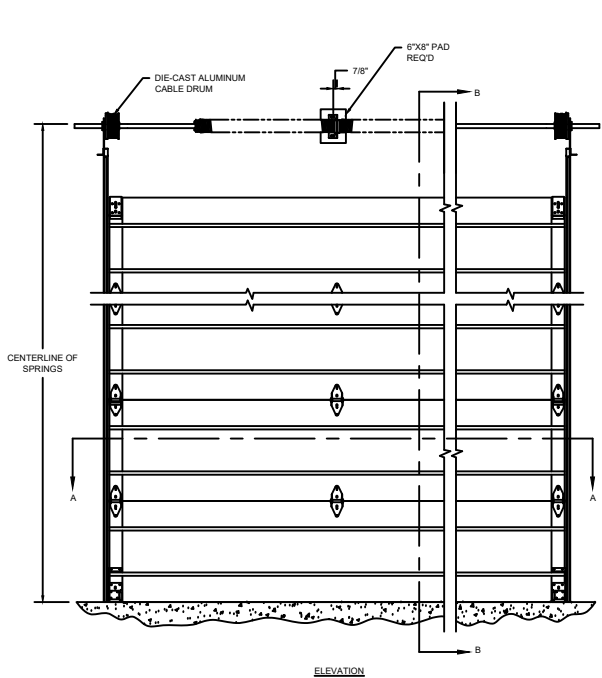
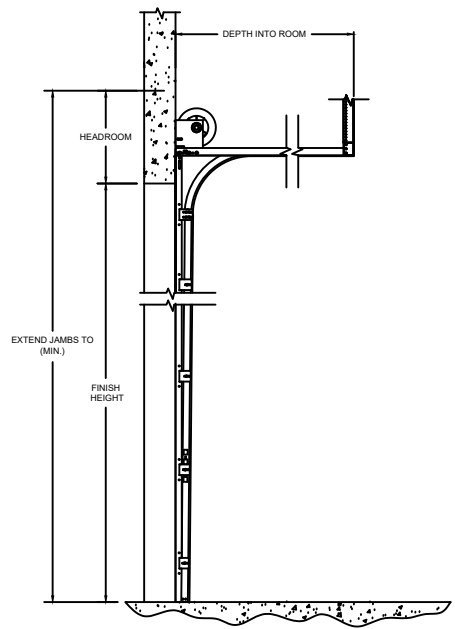


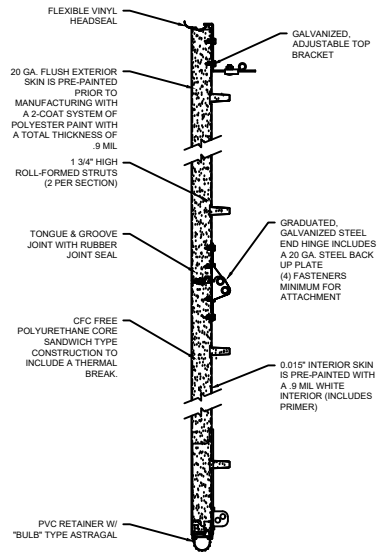
MODEL	STANDARD MAX. VALUES	
	WIDTH	HEIGHT
TS 200	40' 2"	32' 1"



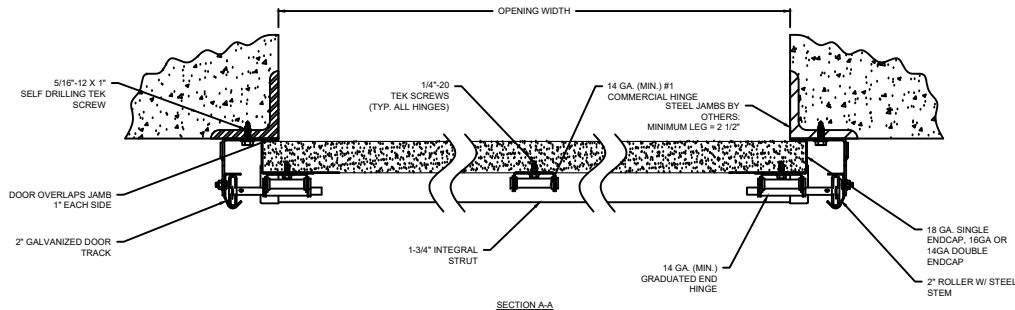
ELEVATION



SIDE ELEVATION
STANDARD LIFT



SECTION B-B



SECTION A-A

OPTIONS	
OPENING WIDTH	
OPENING HEIGHT	
DOOR TRACK SIZE	<input type="checkbox"/> 2" <input type="checkbox"/> 3"
END STILES	<input type="checkbox"/> SINGLE <input type="checkbox"/> DOUBLE
WINDOW OPTIONS	<input type="checkbox"/> NO WINDOW <input type="checkbox"/> ONE - 24" X 7" <input type="checkbox"/> TWO - 24" X 7" <input type="checkbox"/> THREE - 24" X 7" <input type="checkbox"/> ONE - 25" X 12" <input type="checkbox"/> TWO - 25" X 12" <input type="checkbox"/> THREE - 25" X 12" <input type="checkbox"/> FULL VIEW SECTIONS
SEAL OPTIONS	<input type="checkbox"/> JAMB SEAL <input type="checkbox"/> STANDARD BOTTOM SEAL <input type="checkbox"/> TOP SEAL <input type="checkbox"/> ELECTRIC SAFETY EDGE <input type="checkbox"/> PNEUMATIC SAFETY EDGE <input type="checkbox"/> VINYL STOP MOLD
LOCK OPTIONS	<input type="checkbox"/> SLIDE LOCK <input type="checkbox"/> UNILOCK CENTER 2 ROD

COMPONENT	MATERIAL	OPERATION	NOTES:
SECTIONS	ROLL-FORMED, HOT DIPPED, GALVANIZED	MANUAL	- THE INSULATION WILL HAVE A U-FACTOR OF 0.12 (R-VALUE OF 17.5). U-FACTOR VALUES ARE INDEPENDENTLY TESTED AND VERIFIED PER ANSI/DASMA 105. WAYNE DALTON™ USES A CALCULATED DOOR SECTION R-VALUE FOR OUR INSULATED DOORS. THIS DOOR FEATURES TESTED AIR INFILTRATION AT 25 MPH (40 KMPH) OF .17 CFM/FT2 (1.46 M3/HR/M2).
END STILES	14 GA / 16 GA. OR 18GA STEEL		
HARDWARE	GALVANIZED STEEL		
WEATHERSTRIP	EPDM RUBBER		

THERMOSPAN®

TS 200 SECTIONAL STEEL DOORS (INSULATED)

DWG. NO.	DATE:	Wayne Dalton®
SHEET	BY:	