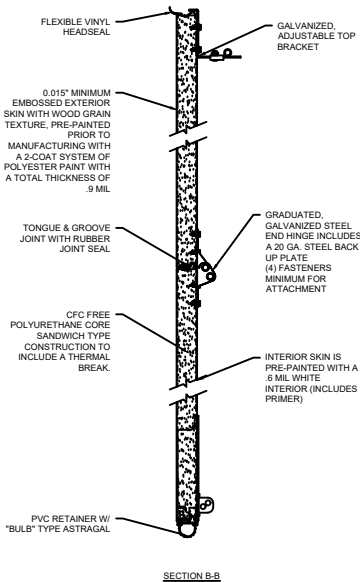
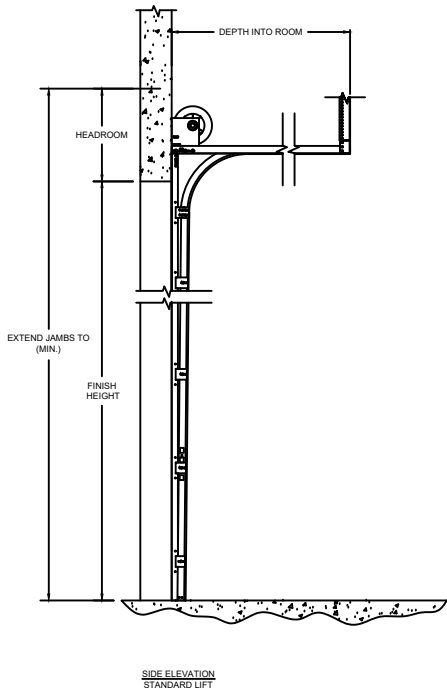
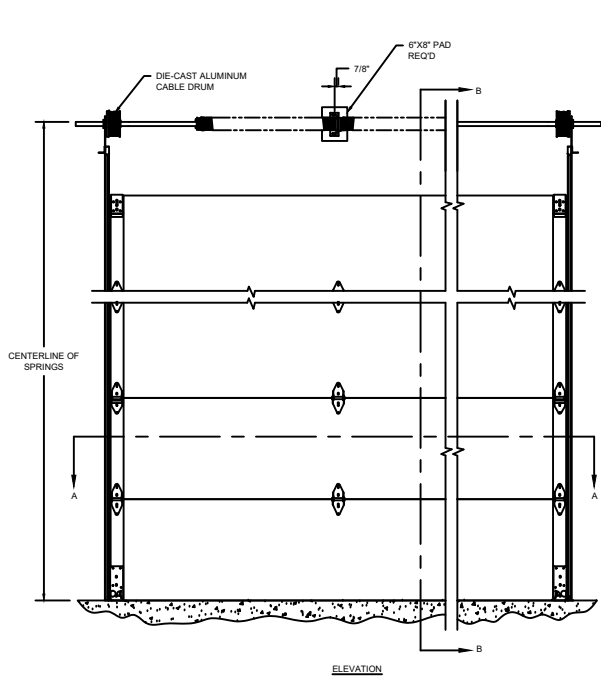
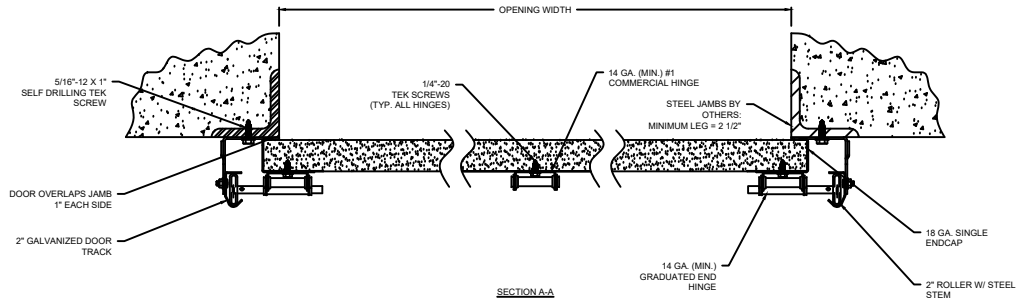


MODEL	STANDARD MAX. VALUES	
	WIDTH	HEIGHT
5200 5255	26' 2"	20' 1"



#### OPTIONS

OPENING WIDTH	
OPENING HEIGHT	
DOOR TRACK SIZE	<input type="checkbox"/> 2" <input type="checkbox"/> 3"
END STILES	<input type="checkbox"/> SINGLE <input type="checkbox"/> DOUBLE
WINDOW OPTIONS	<input type="checkbox"/> NO WINDOW <input type="checkbox"/> ONE - 24" X 7" <input type="checkbox"/> TWO - 24" X 7" <input type="checkbox"/> THREE - 24" X 7"
SEAL OPTIONS	<input type="checkbox"/> JAMB SEAL <input type="checkbox"/> STANDARD BOTTOM SEAL <input type="checkbox"/> TOP SEAL <input type="checkbox"/> ELECTRIC SAFETY EDGE <input type="checkbox"/> PNEUMATIC SAFETY EDGE <input type="checkbox"/> VINYL STOP MOLD
LOCK OPTIONS	<input type="checkbox"/> SLIDE LOCK <input type="checkbox"/> UNILOCK CENTER 2 ROD



COMPONENT	MATERIAL	OPERATION	NOTES:
SECTIONS	ROLL-FORMED, HOT DIPPED, GALVANIZED	MANUAL	- THE INSULATION WILL HAVE A U-FACTOR OF 0.12 (R-VALUE OF 16.22). U-FACTOR VALUES ARE INDEPENDENTLY TESTED AND VERIFIED PER ANSI/DASMA 105. OVERHEAD DOOR™ BRAND USES A CALCULATED DOOR SECTION R-VALUE FOR OUR INSULATED DOORS. THIS DOOR FEATURES TESTED AIR INFILTRATION AT 15 MPH (24 KMPH) OF .23 CFM/FT² (1.28 M³/HR/M²).
END STILES	18 GA. STEEL		
HARDWARE	GALVANIZED STEEL		
WEATHERSTRIP	EPDM RUBBER		

**THERMOMARK™**

5200 5255 SECTIONAL STEEL DOORS (INSULATED)

DWG. NO.	DATE:	<b>Wayne Dalton.</b>
SHEET	BY:	