

## MODEL 883 ADV-XTREME

EXTERIOR HEAVY-DUTY HIGH SPEED, HIGH PERFORMANCE FABRIC DOOR



## Fast acting, heavy-duty fabric door

### HIGH PERFORMANCE, LOW MAINTENANCE DESIGN

- Standard hood blocks moisture and debris from impeding door operation
- Springless design requires minimal interruption for maintenance
- Direct-mounted gear drive minimizes wear and tear
- Variable frequency drive eliminates sudden jolts from door start/stop
- Patented breakaway system design with impact detection and push button self-repair

### RUGGED FABRIC CONSTRUCTION

- Ideal for exterior applications

### INSTALLER FRIENDLY

- Pre-assembled sub-assemblies for easier installation
- Plug and play wiring reduces need for licensed electrician

### EXCELLENT WIND LOAD PROTECTION

- Patented roller windlocks on struts
- Bottom windlocks for pressure protection



# MODEL 883 ADV-XTREME

EXTERIOR HEAVY-DUTY HIGH SPEED, HIGH PERFORMANCE FABRIC DOOR

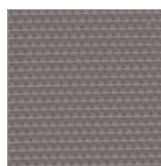
## STANDARD FEATURES OVERVIEW

MAX WIDTH <sup>▲</sup>	20'
MAX HEIGHT <sup>▲</sup>	20'
MAX OPENING SPEED	Up to 65" per second
MAX CLOSING SPEED	Up to 40" per second
BOTTOM BAR BREAKAWAY	Yes
WIND LOAD*	Up to 19.5 psf
WIND STRUTS	Metal struts with roller windlocks
CURTAIN MATERIAL	3 layers of PVC-coated polyester with 2 layers of polyester weave
HEADER BRACES	Multiple braces across entire width strengthen and combat sagging
HOOD	Protection from debris and moisture
OPERATION	Direct drive motor and gearbox system with field changeable universal handing and door stop safety device
CONTROL PANEL	Variable frequency drive NEMA 4X cULus listed; Onboard self diagnostic and service reminder; Built-in padlockable fused disconnect
OBSTRUCTION SAFETY DETECTION	Infrared sensors mounted in-plane to the door curtain at 18" and 50" - 54" from floor
REVERSING SAFETY EDGE	Wireless reversing edge
AVAILABLE SUPPLY VOLTAGES**	208V AC 1 PH <sup>†</sup> , 220V AC 1 PH, 208V AC 3 PH <sup>†</sup> , 230V AC 3 PH, 460V AC 3 PH, 575V AC 3 PH <sup>†</sup> ( <i>†Requires stand-alone mounted transformer</i> )
HINGED GUIDES	Provide easy access for maintenance

## OPTIONS

- **20" high vision panels** – spaced evenly across width of door
- **Multiple actuation options** – push button, motion detector, radio control, key switch, pull switch, loop detector, treadle switch. Wireless options available
- **Signaling devices** – red/green LED warning light, horn/strobe combination, rotating warning light
- **Programmable LED Lighting Package** – 3' tall light bar with red, yellow, green lights
- **Sloped hood and non-drive end cover** – protection from debris and moisture
- **Light curtain** – front or rear mounted; available in 3' and 6' models

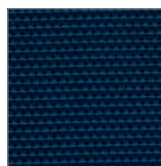
## CURTAIN COLOR OPTIONS



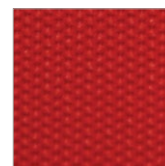
Gray



Orange



Blue



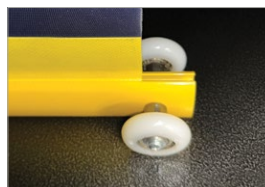
Red

Standard color for guides and bottom bar is yellow.

Approximately 200 optional RAL powder coat colors are also available.



Actual colors may vary from brochure due to fluctuations in the printing process. Always request a color sample from your Wayne Dalton Dealer for accurate color matching.



Wind strut with roller windlock



Bottom Windlock

\*Wind load is the ultimate pressure tested at door width of 20'.

\*\*Single phase available up to 10" x 10".

▲ Width and height of door may affect opening speed.

Please consult factory for specifics.

## APPLICATIONS

- Manufacturing/Heavy manufacturing
- Warehouse distribution
- Auto/Transit
- Food and Beverage

**Wayne Dalton**

2501 S. State Hwy. 121 Bus., Ste 200  
Lewisville, TX 75067



[wayne-dalton.com](http://wayne-dalton.com)