



OPTIONS	
OPENING WIDTH*	
OPENING HEIGHT*	
WINDOW OPTIONS	<input type="checkbox"/> 20" H VISION
VOLTS OPTIONS	<input type="checkbox"/> 115V 1-PHASE <input type="checkbox"/> 230V 1-PHASE
HOOD OPTIONS	<input type="checkbox"/> SLOPED <input type="checkbox"/> STANDARD
HOUSING OPTIONS	<input type="checkbox"/> WITH MOTOR HOUSING <input type="checkbox"/> WITHOUT MOTOR HOUSING

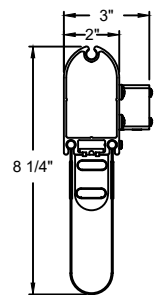


COMPONENT	MATERIAL	OPERATION	NOTES:
HOOD	22 GA. STEEL	MOTOR LH	1. WINDLOAD 4 P.S.F ULTIMATE @ 16' WIDE * PLEASE REFER TO WALL GUIDE FOR COMPLETE LIST OF BUILDING SPECIFICATIONS
INTERIOR CURTAIN	2 THIN LAYER PVC COATED POLYESTER WITH 1 LAYER POLYESTER WEAVE		
EXT. / INT. CURTAIN	2 LAYER PVC COATED POLYESTER WITH 1 LAYER POLYESTER WEAVE		
GUIDES	HIGH STRENGTH STEEL		
BOTTOM BAR	EXTRUDED ALUMINUM		

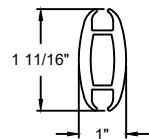
ADV-XTREME

882 STRUTTED INTERIOR HIGH SPEED FABRIC DOOR

DWG. NO.	DATE:	
SHEET	BY:	



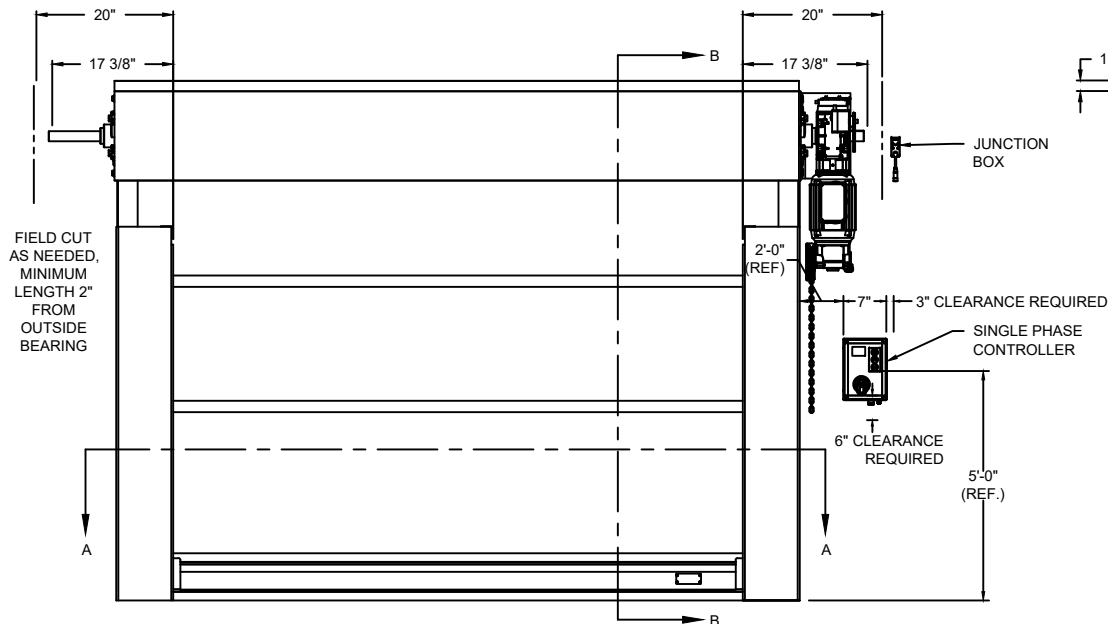
BOTTOM BAR DETAIL



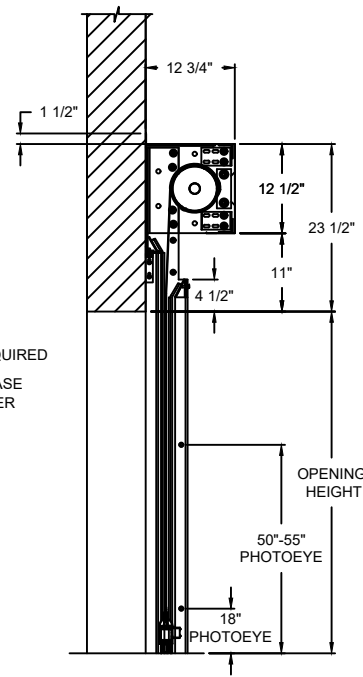
STRUT DETAIL

OPTIONS

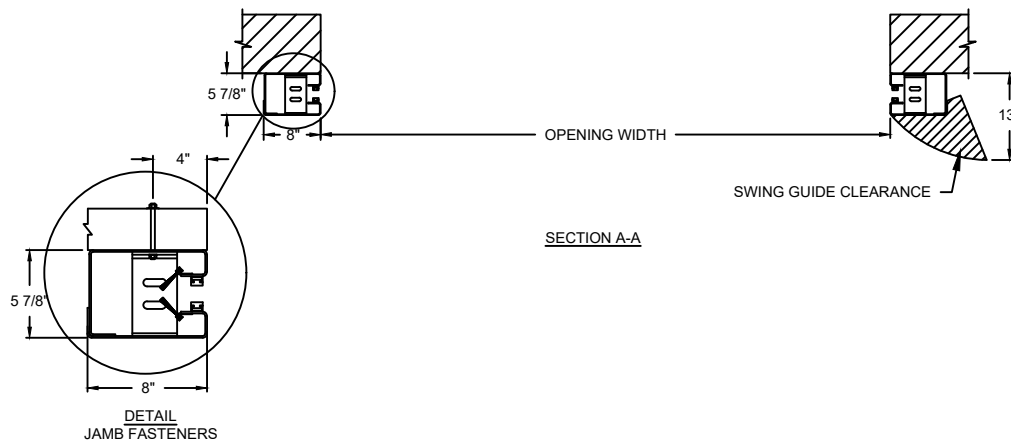
OPENING WIDTH*	
OPENING HEIGHT*	
WINDOW OPTIONS	<input type="checkbox"/> 20" H VISION
VOLTS OPTIONS	<input type="checkbox"/> 115V 1-PHASE <input type="checkbox"/> 230V 1-PHASE
HOOD OPTIONS	<input type="checkbox"/> SLOPED <input type="checkbox"/> STANDARD
HOUSING OPTIONS	<input type="checkbox"/> WITH MOTOR HOUSING <input type="checkbox"/> WITHOUT MOTOR HOUSING



ELEVATION



SECTION B-B



SECTION A-A

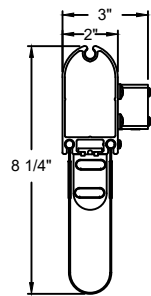
**DETAIL
JAMB FASTENERS**

COMPONENT	MATERIAL	OPERATION	NOTES:
HOOD	22 GA. STEEL	MOTOR RH	1. WINDLOAD 4 P.S.F ULTIMATE @ 16" WIDE * PLEASE REFER TO WALL GUIDE FOR COMPLETE LIST OF BUILDING SPECIFICATIONS
INTERIOR CURTAIN	2 THIN LAYER PVC COATED POLYESTER WITH 1 LAYER POLYESTER WEAVE		
EXT. / INT. CURTAIN	2 LAYER PVC COATED POLYESTER WITH 1 LAYER POLYESTER WEAVE		
GUIDES	HIGH STRENGTH STEEL		
BOTTOM BAR	EXTRUDED ALUMINUM		

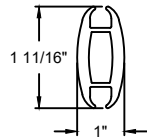
ADV-XTREME

882 STRUTTED INTERIOR HIGH SPEED FABRIC DOOR

DWG. NO.	DATE:	Wayne Dalton.
SHEET	BY:	



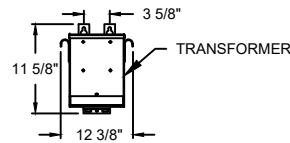
BOTTOM BAR DETAIL



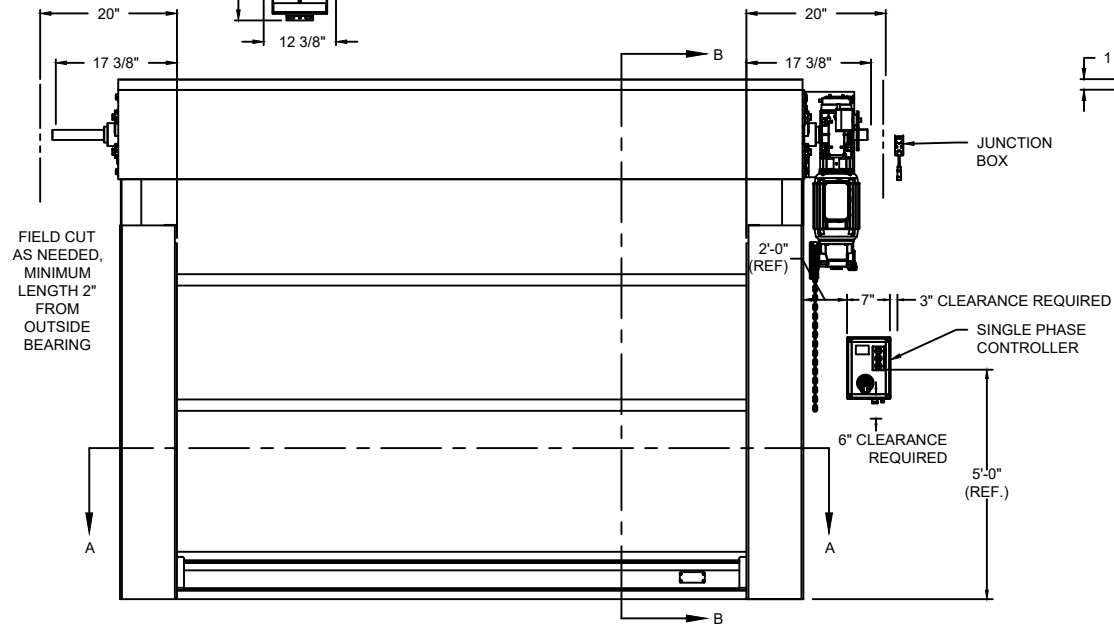
STRUT DETAIL

OPTIONS

OPENING WIDTH*	
OPENING HEIGHT*	
WINDOW OPTIONS	<input type="checkbox"/> 20" H VISION
HOOD OPTIONS	<input type="checkbox"/> SLOPED <input type="checkbox"/> STANDARD
HOUSING OPTIONS	<input type="checkbox"/> WITH MOTOR HOUSING <input type="checkbox"/> WITHOUT MOTOR HOUSING

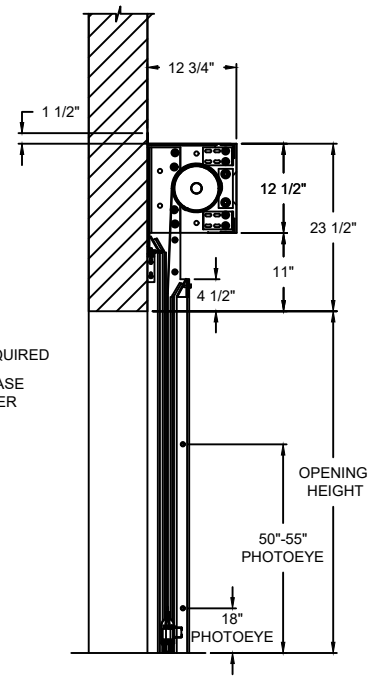


TRANSFORMER

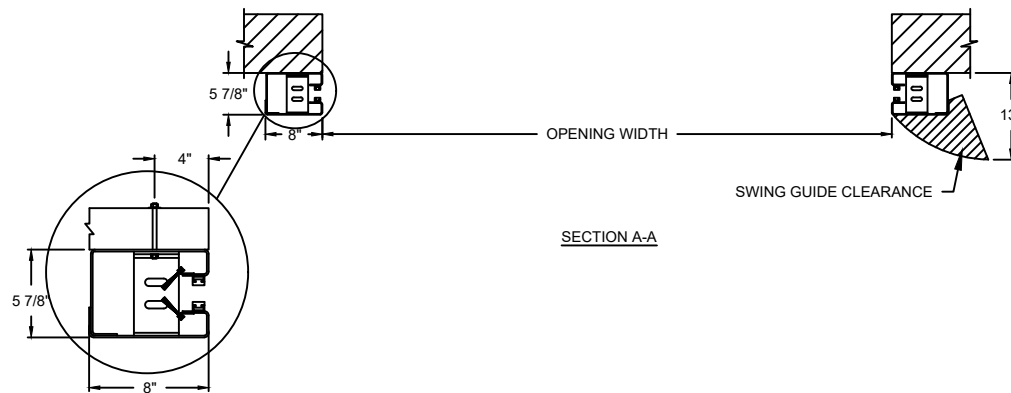


ELEVATION

MODEL	STANDARD MAX. VALUES	
	WIDTH	HEIGHT
882	16'	15'



SECTION B-B



SECTION A-A

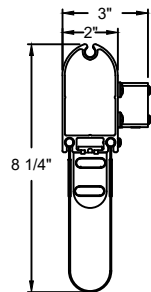
**DETAIL
JAMB FASTENERS**

COMPONENT	MATERIAL	OPERATION	NOTES:
HOOD	22 GA. STEEL	MOTOR RH 208V 1-PHASE VIA TRANSFORMER (190-270V RANGE)	1. WINDLOAD 4 P.S.F ULTIMATE @ 16" WIDE * PLEASE REFER TO WALL GUIDE FOR COMPLETE LIST OF BUILDING SPECIFICATIONS
INTERIOR CURTAIN	2 THIN LAYER PVC COATED POLYESTER WITH 1 LAYER POLYESTER WEAVE		
EXT. / INT. CURTAIN	2 LAYER PVC COATED POLYESTER WITH 1 LAYER POLYESTER WEAVE		
GUIDES	HIGH STRENGTH STEEL		
BOTTOM BAR	EXTRUDED ALUMINUM		

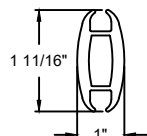
ADV-XTREME

882 STRUTTED INTERIOR HIGH SPEED FABRIC DOOR

DWG. NO.	DATE:	Wayne Dalton.
SHEET	BY:	



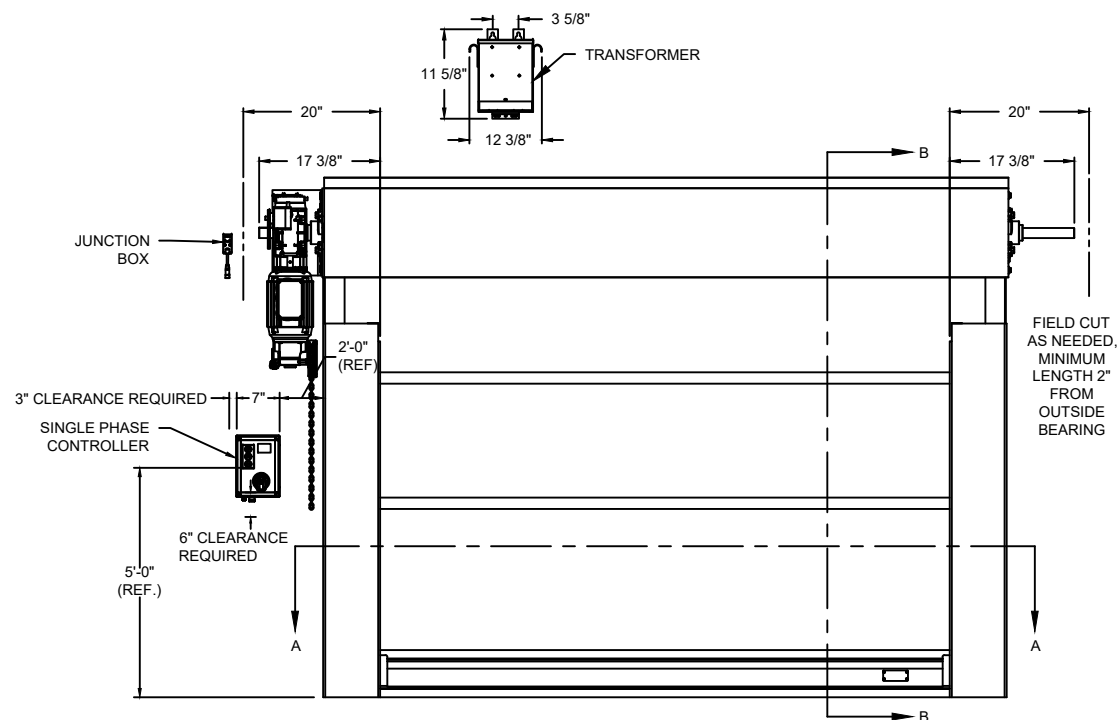
BOTTOM BAR DETAIL



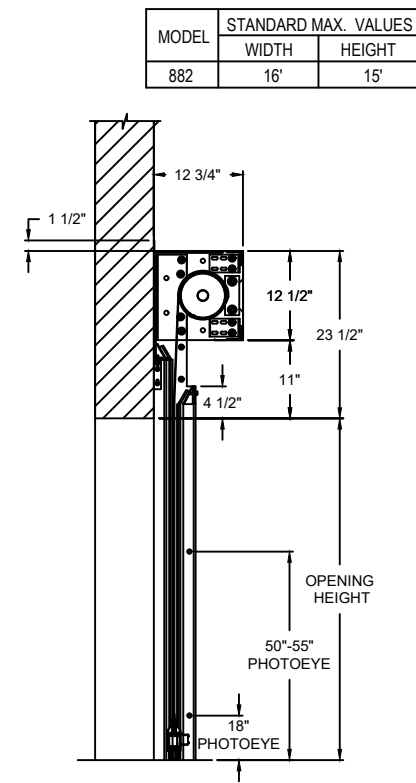
STRUT DETAIL

OPTIONS

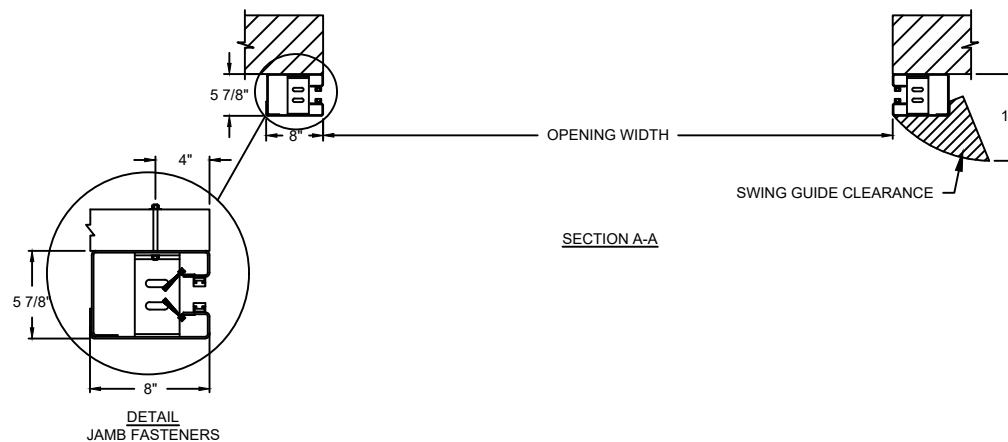
OPENING WIDTH*	
OPENING HEIGHT*	
WINDOW OPTIONS	<input type="checkbox"/> 20" H VISION
HOOD OPTIONS	<input type="checkbox"/> SLOPED <input type="checkbox"/> STANDARD
HOUSING OPTIONS	<input type="checkbox"/> WITH MOTOR HOUSING <input type="checkbox"/> WITHOUT MOTOR HOUSING



ELEVATION



SECTION B-B



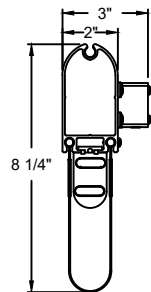
SECTION A-A

COMPONENT	MATERIAL	OPERATION	NOTES:
HOOD	22 GA. STEEL	MOTOR LH 208V 1-PHASE VIA TRANSFORMER (190-270V RANGE)	1. WINDLOAD 4 P.S.F ULTIMATE @ 16" WIDE * PLEASE REFER TO WALL GUIDE FOR COMPLETE LIST OF BUILDING SPECIFICATIONS
INTERIOR CURTAIN	2 THIN LAYER PVC COATED POLYESTER WITH 1 LAYER POLYESTER WEAVE		
EXT. / INT. CURTAIN	2 LAYER PVC COATED POLYESTER WITH 1 LAYER POLYESTER WEAVE		
GUIDES	HIGH STRENGTH STEEL		
BOTTOM BAR	EXTRUDED ALUMINUM		

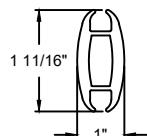
ADV-XTREME

882 STRUTTED INTERIOR HIGH SPEED FABRIC DOOR

DWG. NO.	DATE:	Wayne Dalton.
SHEET	BY:	



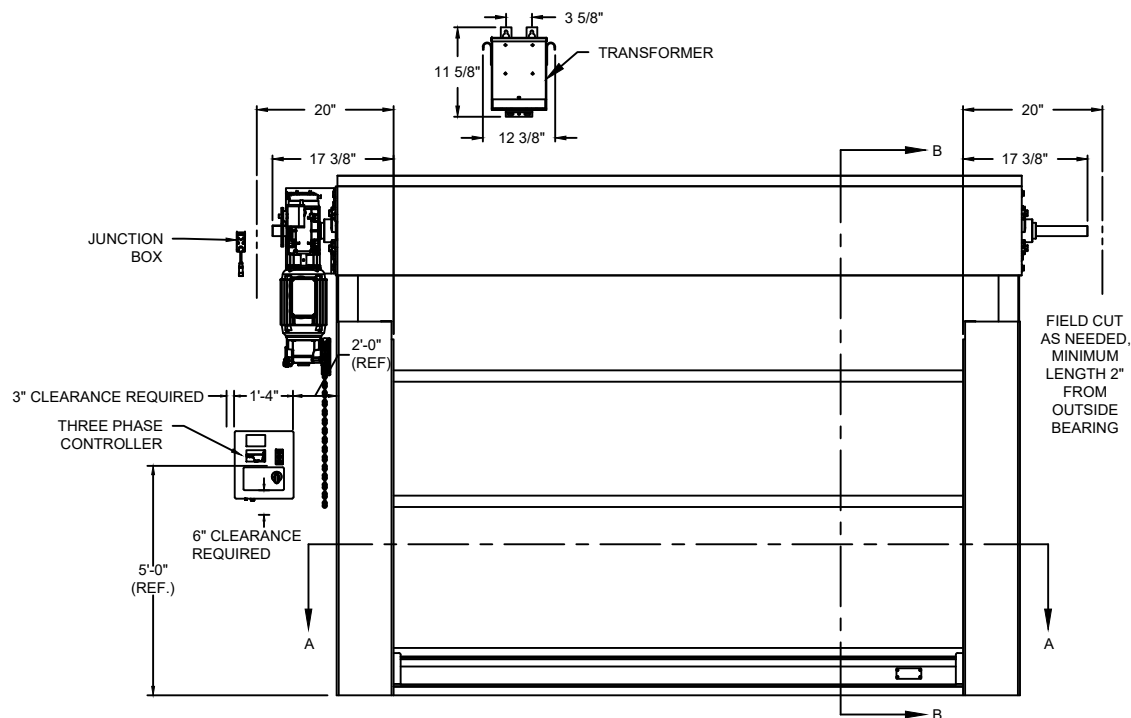
BOTTOM BAR DETAIL



STRUT DETAIL

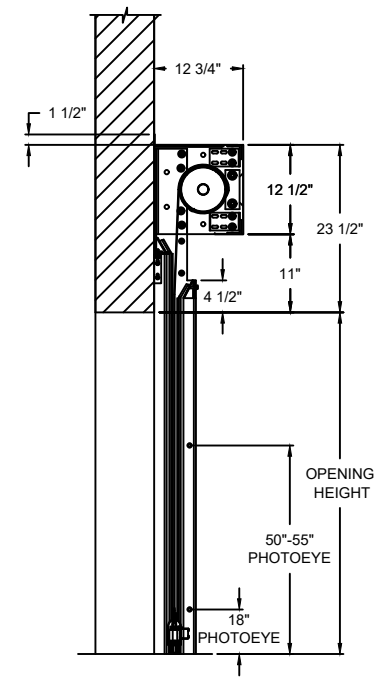
OPTIONS

OPENING WIDTH*	
OPENING HEIGHT*	
WINDOW OPTIONS	<input type="checkbox"/> 20" H VISION
HOOD OPTIONS	<input type="checkbox"/> SLOPED <input type="checkbox"/> STANDARD
HOUSING OPTIONS	<input type="checkbox"/> WITH MOTOR HOUSING <input type="checkbox"/> WITHOUT MOTOR HOUSING

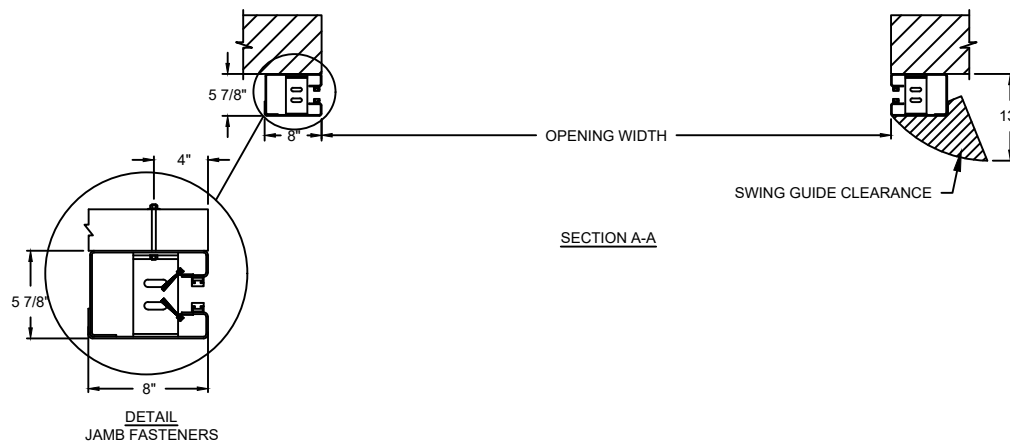


ELEVATION

MODEL	STANDARD MAX. VALUES	
	WIDTH	HEIGHT
882	16'	15'



SECTION B-B



SECTION A-A

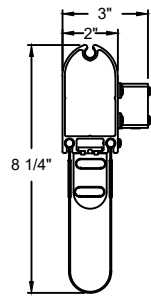
**DETAIL
JAMB FASTENERS**

COMPONENT	MATERIAL	OPERATION	NOTES:
HOOD	22 GA. STEEL	MOTOR LH 208V 3-PHASE VIA TRANSFORMER (190-270V RANGE)	1. WINDLOAD 4 P.S.F ULTIMATE @ 16" WIDE * PLEASE REFER TO WALL GUIDE FOR COMPLETE LIST OF BUILDING SPECIFICATIONS
INTERIOR CURTAIN	2 THIN LAYER PVC COATED POLYESTER WITH 1 LAYER POLYESTER WEAVE		
EXT. / INT. CURTAIN	2 LAYER PVC COATED POLYESTER WITH 1 LAYER POLYESTER WEAVE		
GUIDES	HIGH STRENGTH STEEL		
BOTTOM BAR	EXTRUDED ALUMINUM		

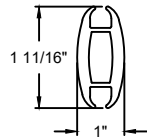
ADV-XTREME

882 STRUTTED INTERIOR HIGH SPEED FABRIC DOOR

DWG. NO.	DATE:	Wayne Dalton.
SHEET	BY:	



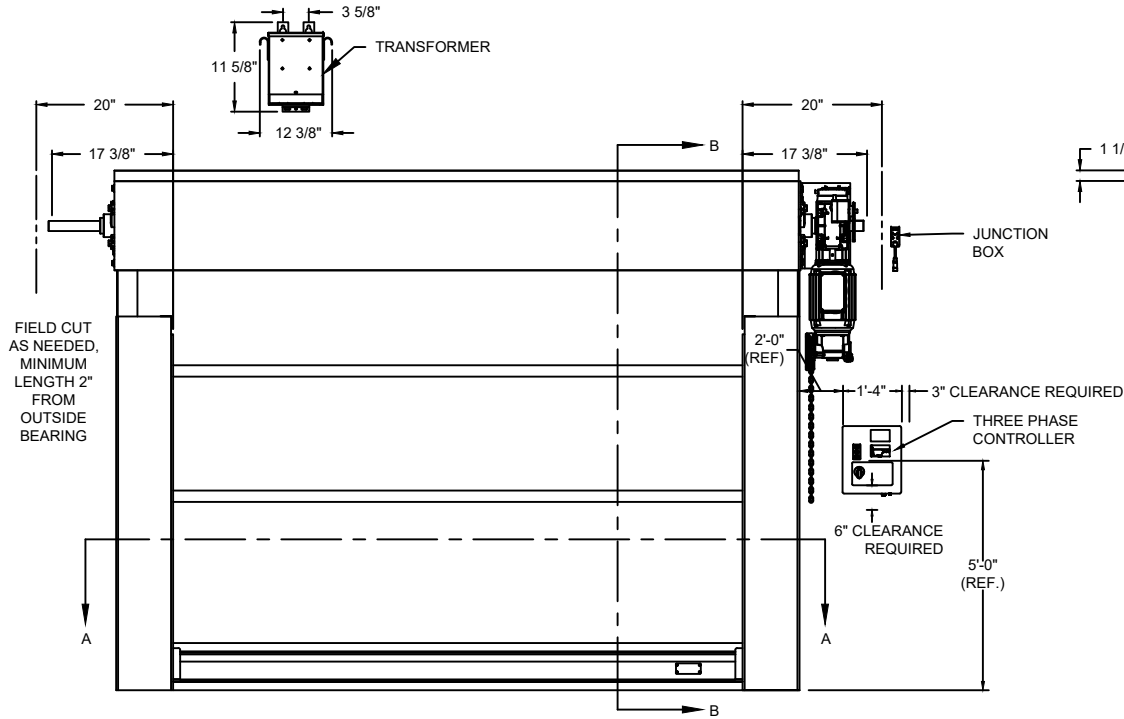
BOTTOM BAR DETAIL



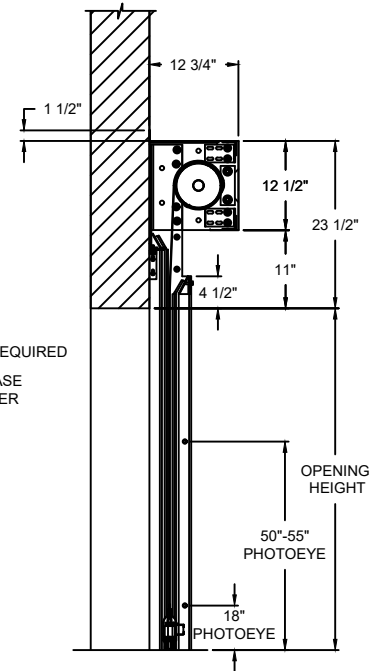
STRUT DETAIL

OPTIONS

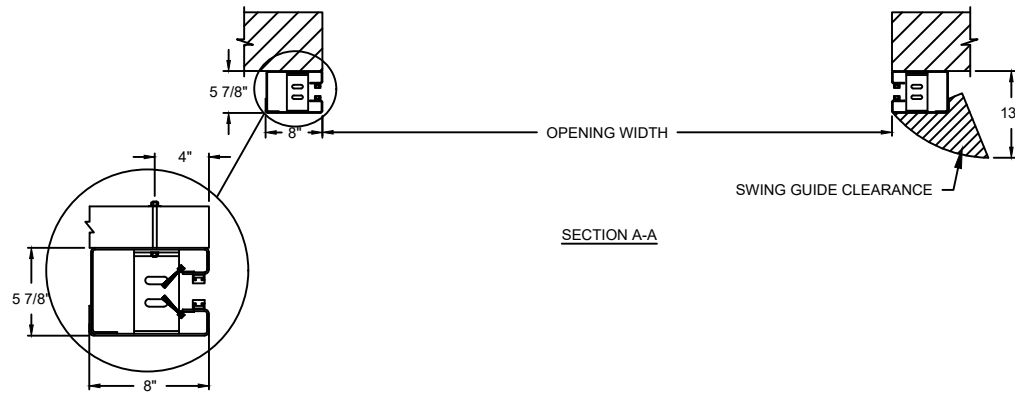
OPENING WIDTH*	
OPENING HEIGHT*	
WINDOW OPTIONS	<input type="checkbox"/> 20" H VISION
HOOD OPTIONS	<input type="checkbox"/> SLOPED <input type="checkbox"/> STANDARD
HOUSING OPTIONS	<input type="checkbox"/> WITH MOTOR HOUSING <input type="checkbox"/> WITHOUT MOTOR HOUSING



ELEVATION



SECTION B-B



SECTION A-A

**DETAIL
JAMB FASTENERS**

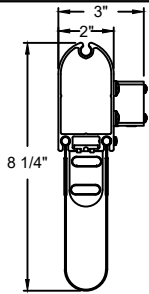
COMPONENT	MATERIAL	OPERATION	NOTES:
HOOD	22 GA. STEEL	MOTOR RH 208V 3-PHASE VIA TRANSFORMER (190-270V RANGE)	1. WINDLOAD 4 P.S.F ULTIMATE @ 16" WIDE * PLEASE REFER TO WALL GUIDE FOR COMPLETE LIST OF BUILDING SPECIFICATIONS
INTERIOR CURTAIN	2 THIN LAYER PVC COATED POLYESTER WITH 1 LAYER POLYESTER WEAVE		
EXT. / INT. CURTAIN	2 LAYER PVC COATED POLYESTER WITH 1 LAYER POLYESTER WEAVE		
GUIDES	HIGH STRENGTH STEEL		
BOTTOM BAR	EXTRUDED ALUMINUM		

MODEL	STANDARD MAX. VALUES	
	WIDTH	HEIGHT
882	16'	15'

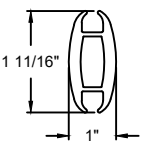
ADV-XTREME

882 STRUTTED INTERIOR HIGH SPEED FABRIC DOOR

DWG. NO.	DATE:	Wayne Dalton.
SHEET	BY:	



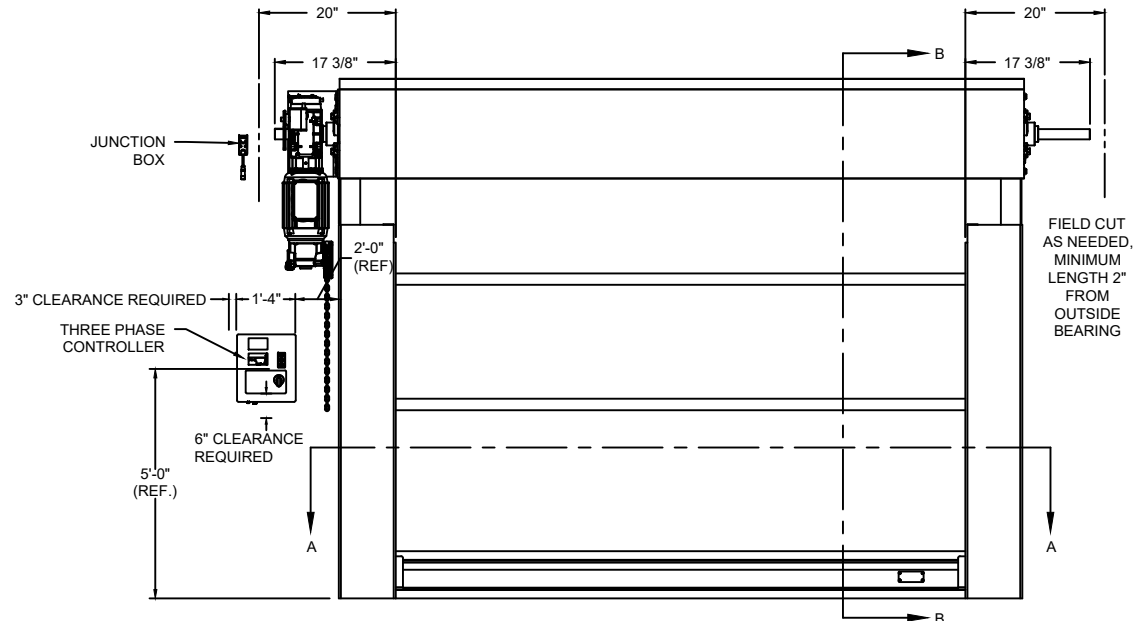
BOTTOM BAR DETAIL



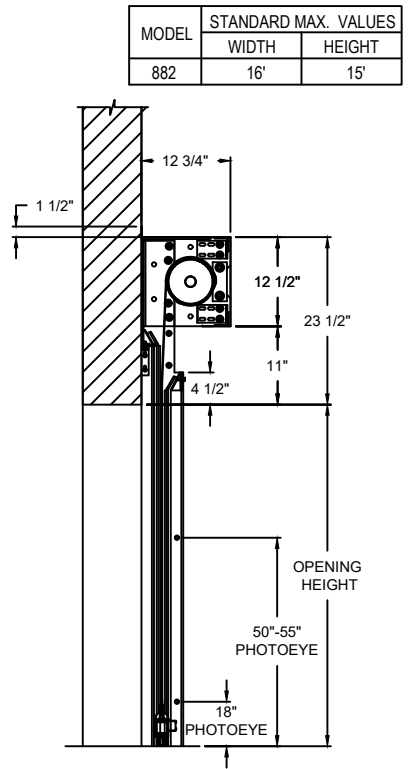
STRUT DETAIL

OPTIONS

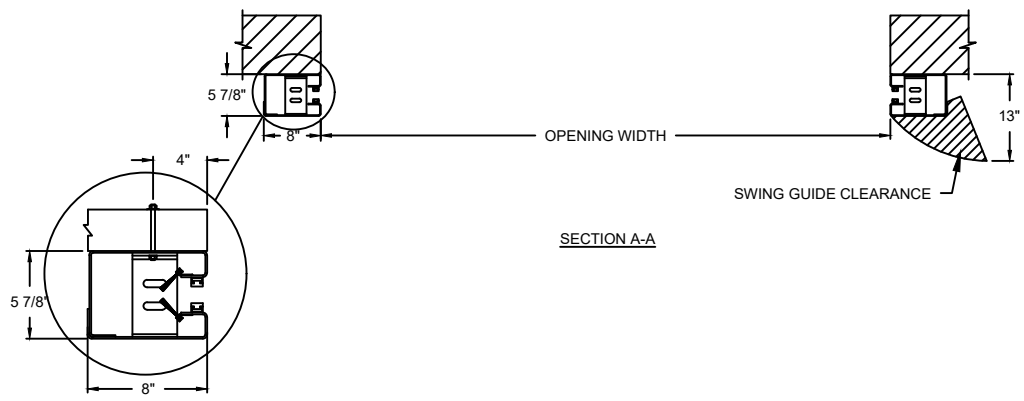
OPENING WIDTH*	
OPENING HEIGHT*	
WINDOW OPTIONS	<input type="checkbox"/> 20" H VISION
VOLTS OPTIONS	<input type="checkbox"/> 230V 3-PHASE <input type="checkbox"/> 460V 3-PHASE
HOOD OPTIONS	<input type="checkbox"/> SLOPED <input type="checkbox"/> STANDARD
HOUSING OPTIONS	<input type="checkbox"/> WITH MOTOR HOUSING <input type="checkbox"/> WITHOUT MOTOR HOUSING



ELEVATION



SECTION B-B



SECTION A-A

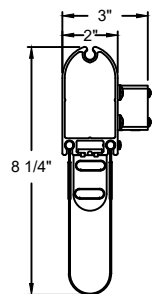
**DETAIL
JAMB FASTENERS**

COMPONENT	MATERIAL	OPERATION	NOTES:
HOOD	22 GA. STEEL	MOTOR LH	1. WINDLOAD 4 P.S.F ULTIMATE @ 16" WIDE * PLEASE REFER TO WALL GUIDE FOR COMPLETE LIST OF BUILDING SPECIFICATIONS
INTERIOR CURTAIN	2 THIN LAYER PVC COATED POLYESTER WITH 1 LAYER POLYESTER WEAVE		
EXT. / INT. CURTAIN	2 LAYER PVC COATED POLYESTER WITH 1 LAYER POLYESTER WEAVE		
GUIDES	HIGH STRENGTH STEEL		
BOTTOM BAR	EXTRUDED ALUMINUM		

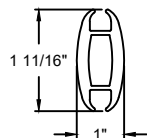
ADV-XTREME

882 STRUTTED INTERIOR HIGH SPEED FABRIC DOOR

DWG. NO.	DATE:	Wayne Dalton.
SHEET	BY:	



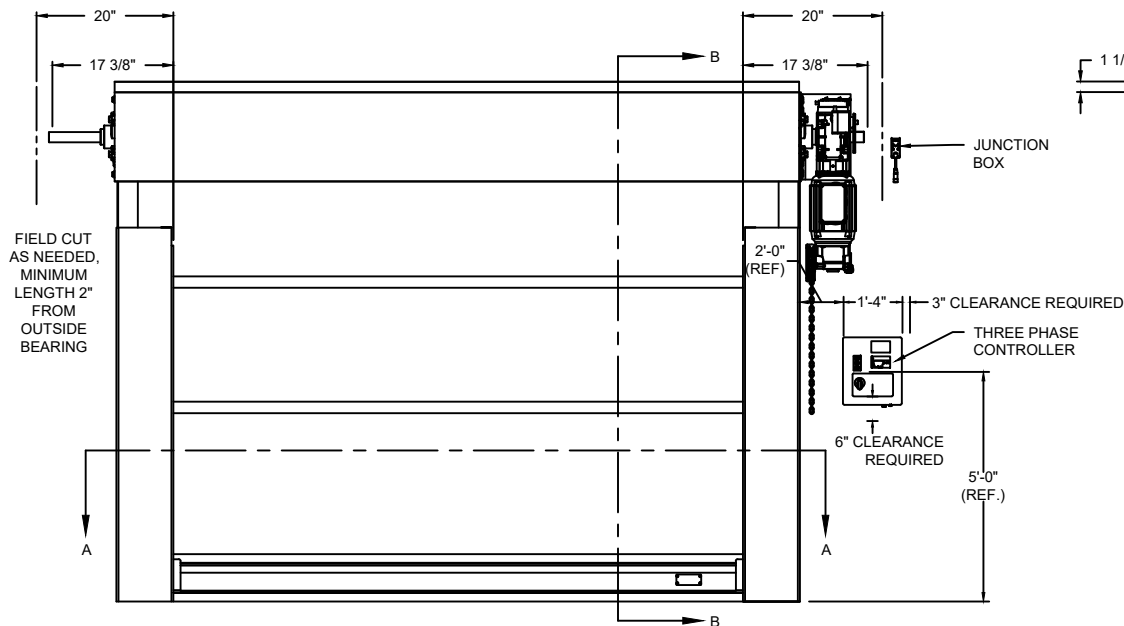
BOTTOM BAR DETAIL



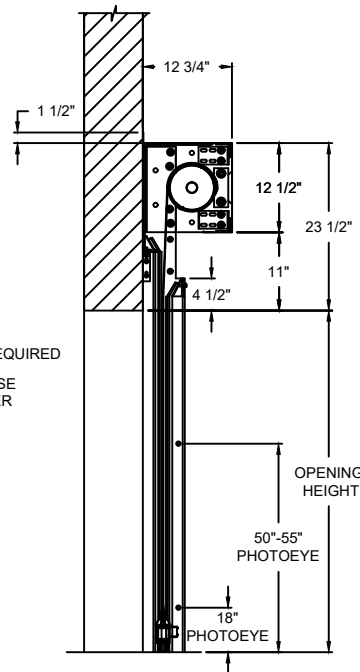
STRUT DETAIL

OPTIONS

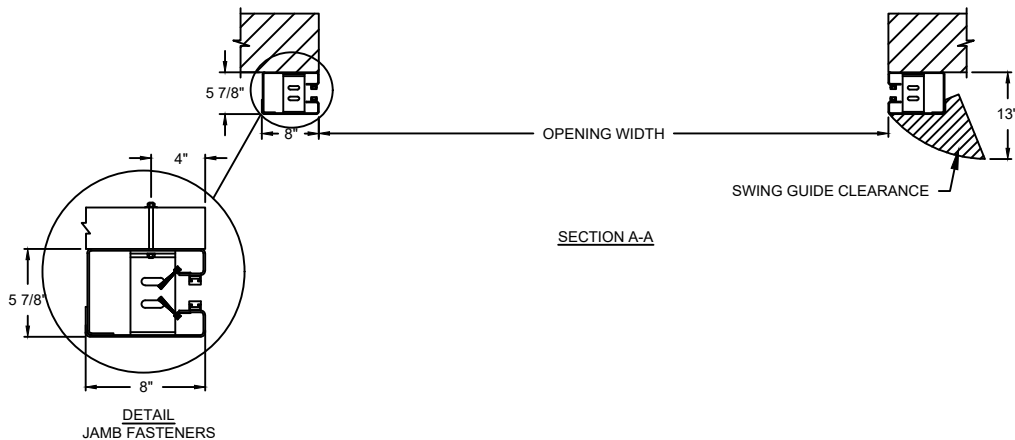
OPENING WIDTH*	
OPENING HEIGHT*	
WINDOW OPTIONS	<input type="checkbox"/> 20" H VISION
VOLTS OPTIONS	<input type="checkbox"/> 230V 3-PHASE <input type="checkbox"/> 460V 3-PHASE
HOOD OPTIONS	<input type="checkbox"/> SLOPED <input type="checkbox"/> STANDARD
HOUSING OPTIONS	<input type="checkbox"/> WITH MOTOR HOUSING <input type="checkbox"/> WITHOUT MOTOR HOUSING



ELEVATION



SECTION B-B



SECTION A-A

**DETAIL
JAMB FASTENERS**

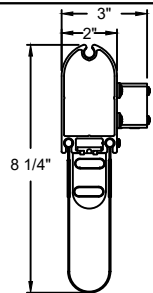
COMPONENT	MATERIAL	OPERATION	NOTES:
HOOD	22 GA. STEEL	MOTOR RH	1. WINDLOAD 4 P.S.F ULTIMATE @ 16" WIDE * PLEASE REFER TO WALL GUIDE FOR COMPLETE LIST OF BUILDING SPECIFICATIONS
INTERIOR CURTAIN	2 THIN LAYER PVC COATED POLYESTER WITH 1 LAYER POLYESTER WEAVE		
EXT. / INT. CURTAIN	2 LAYER PVC COATED POLYESTER WITH 1 LAYER POLYESTER WEAVE		
GUIDES	HIGH STRENGTH STEEL		
BOTTOM BAR	EXTRUDED ALUMINUM		

MODEL	STANDARD MAX. VALUES	
	WIDTH	HEIGHT
882	16'	15'

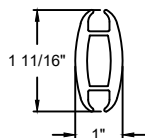
ADV-XTREME

882 STRUTTED INTERIOR HIGH SPEED FABRIC DOOR

DWG. NO.	DATE:	Wayne Dalton.
SHEET	BY:	



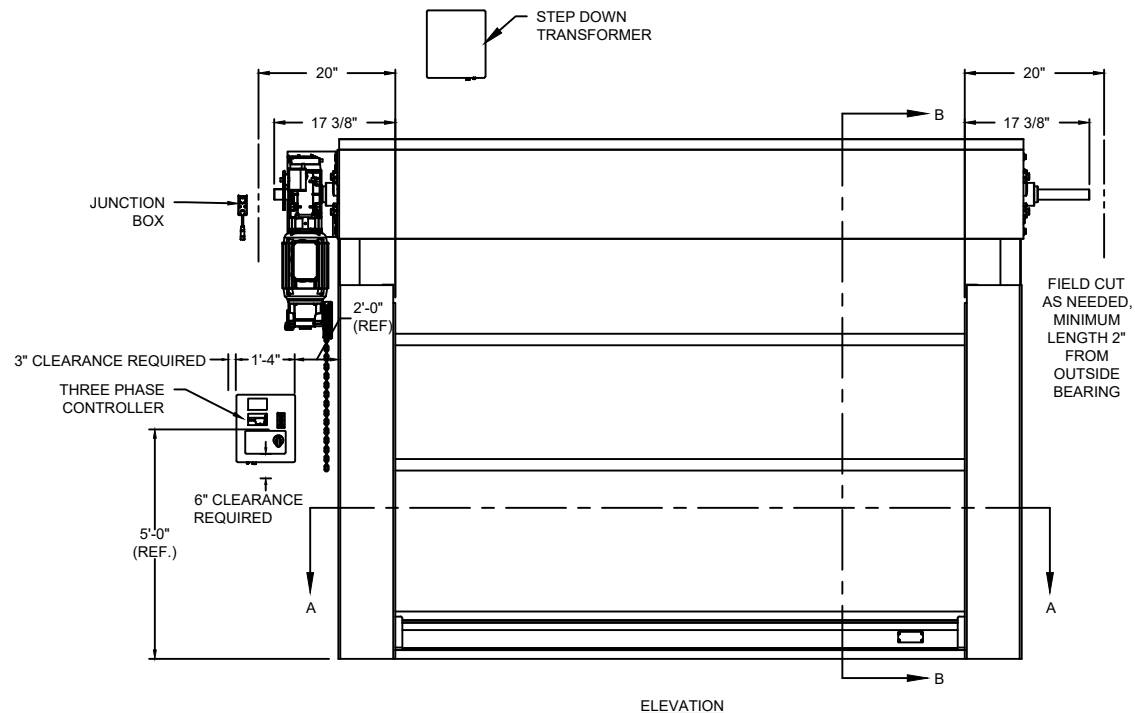
BOTTOM BAR DETAIL



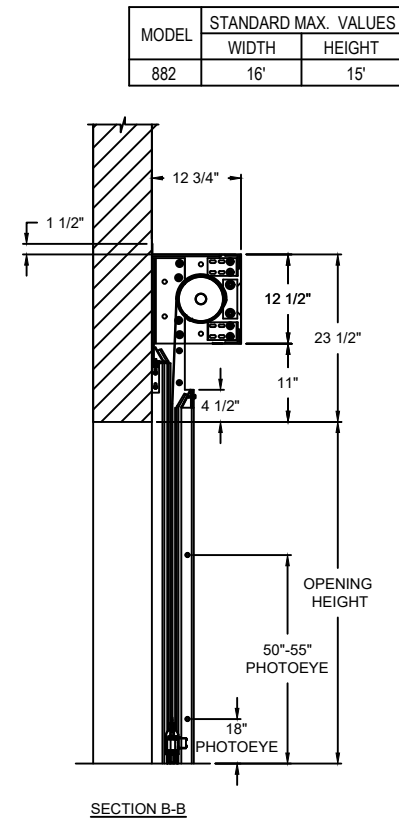
STRUT DETAIL

OPTIONS

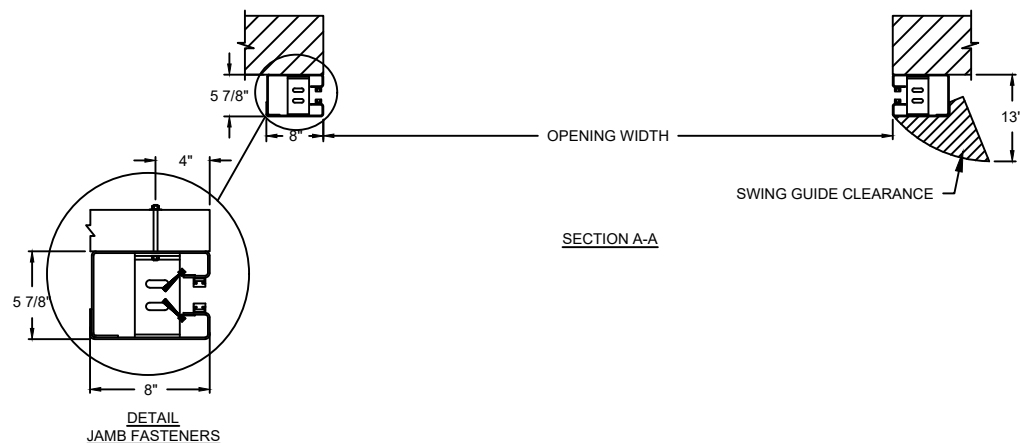
OPENING WIDTH*	
OPENING HEIGHT*	
WINDOW OPTIONS	<input type="checkbox"/> 20" H VISION
HOOD OPTIONS	<input type="checkbox"/> SLOPED <input type="checkbox"/> STANDARD
HOUSING OPTIONS	<input type="checkbox"/> WITH MOTOR HOUSING <input type="checkbox"/> WITHOUT MOTOR HOUSING



ELEVATION



SECTION B-B



SECTION A-A

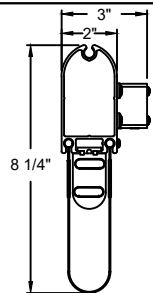
**DETAIL
JAMB FASTENERS**

COMPONENT	MATERIAL	OPERATION	NOTES:
HOOD	22 GA. STEEL	MOTOR LH 575V 3-PHASE	1. WINDLOAD 4 P.S.F ULTIMATE @ 16" WIDE * PLEASE REFER TO WALL GUIDE FOR COMPLETE LIST OF BUILDING SPECIFICATIONS
INTERIOR CURTAIN	2 THIN LAYER PVC COATED POLYESTER WITH 1 LAYER POLYESTER WEAVE		
EXT. / INT. CURTAIN	2 LAYER PVC COATED POLYESTER WITH 1 LAYER POLYESTER WEAVE		
GUIDES	HIGH STRENGTH STEEL		
BOTTOM BAR	EXTRUDED ALUMINUM		

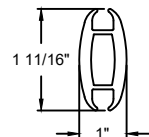
ADV-XTREME

882 STRUTTED INTERIOR HIGH SPEED FABRIC DOOR

DWG. NO.	DATE:	Wayne Dalton.
SHEET	BY:	



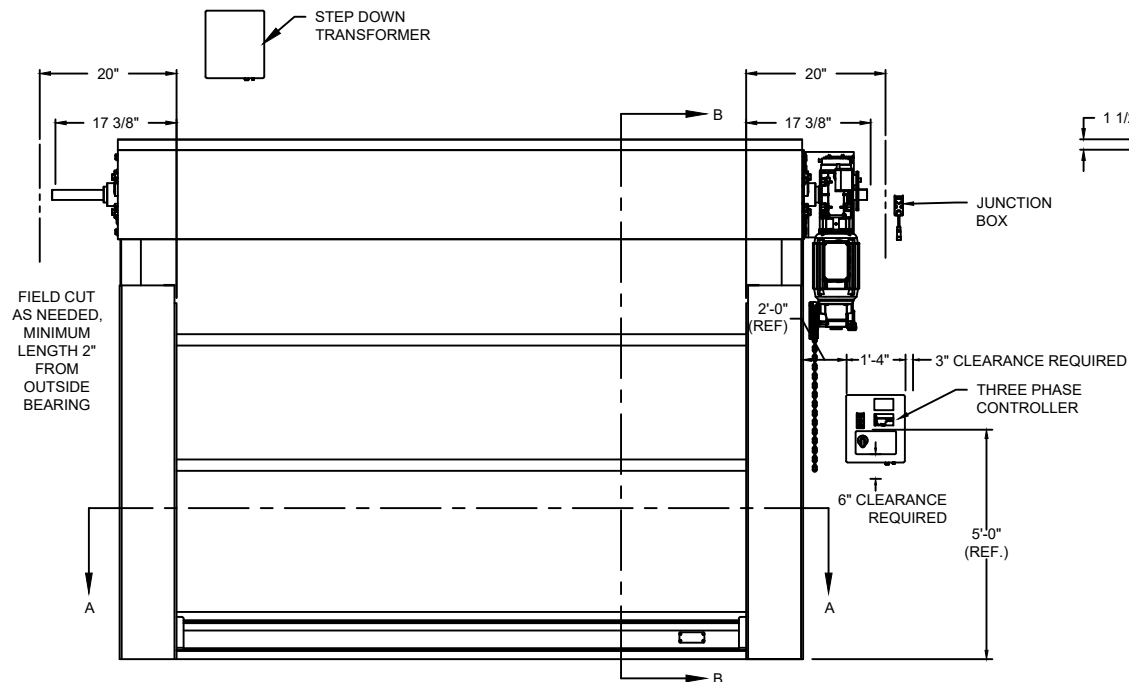
BOTTOM BAR DETAIL



STRUT DETAIL

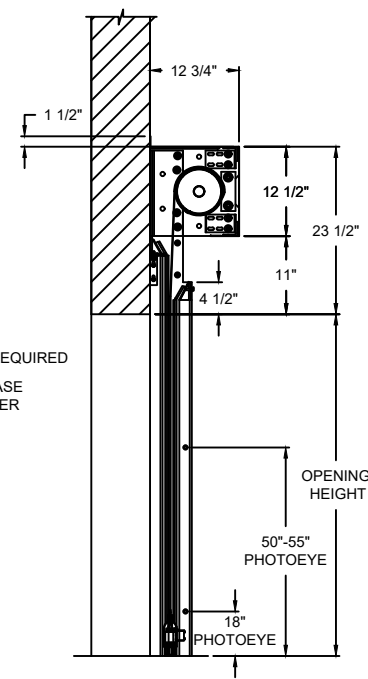
OPTIONS

OPENING WIDTH*	
OPENING HEIGHT*	
WINDOW OPTIONS	<input type="checkbox"/> 20" H VISION
HOOD OPTIONS	<input type="checkbox"/> SLOPED <input type="checkbox"/> STANDARD
HOUSING OPTIONS	<input type="checkbox"/> WITH MOTOR HOUSING <input type="checkbox"/> WITHOUT MOTOR HOUSING

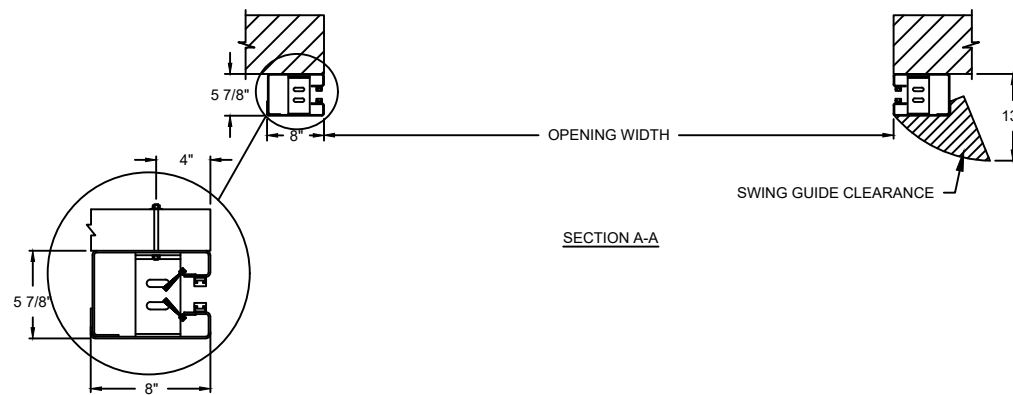


ELEVATION

MODEL	STANDARD MAX. VALUES	
	WIDTH	HEIGHT
882	16'	15'



SECTION B-B



SECTION A-A

**DETAIL
JAMB FASTENERS**

COMPONENT	MATERIAL	OPERATION	NOTES:
HOOD	22 GA. STEEL	MOTOR RH 575V 3-PHASE	1. WINDLOAD 4 P.S.F ULTIMATE @ 16" WIDE * PLEASE REFER TO WALL GUIDE FOR COMPLETE LIST OF BUILDING SPECIFICATIONS
INTERIOR CURTAIN	2 THIN LAYER PVC COATED POLYESTER WITH 1 LAYER POLYESTER WEAVE		
EXT. / INT. CURTAIN	2 LAYER PVC COATED POLYESTER WITH 1 LAYER POLYESTER WEAVE		
GUIDES	HIGH STRENGTH STEEL		
BOTTOM BAR	EXTRUDED ALUMINUM		

ADV-XTREME

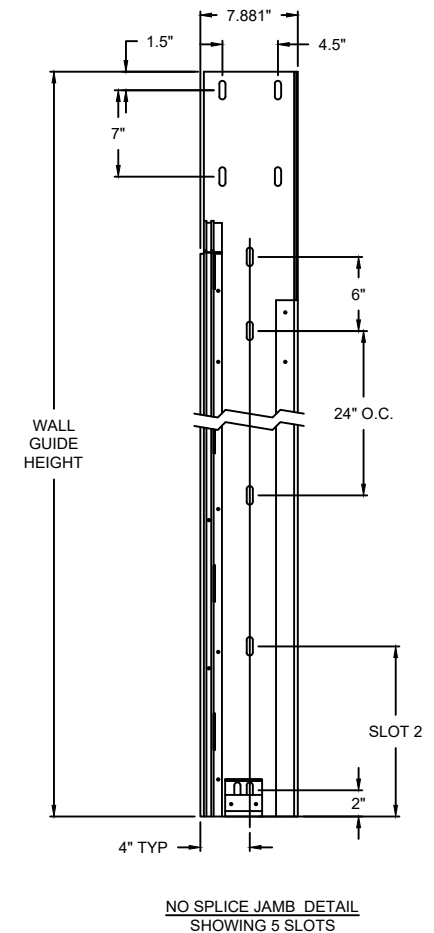
882 STRUTTED INTERIOR HIGH SPEED FABRIC DOOR

DWG. NO.	DATE:	Wayne Dalton.
SHEET	BY:	

STRUT QUANTITY WILL VARY
BASED ON DOOR HEIGHT


OPENING HEIGHT	# OF STRUTS
UP TO 7'3"	1
7'4" TO 10'1"	2
10'2" TO 12'11"	3
13'0" TO 15'0"	4

882 WALL GUIDE NO SPLICE													
BUILD HEIGHT (FT)	BUILD HEIGHT (IN)	WALL GUIDE HEIGHT (IN)	NUMBER OF SLOTS	SLOT 1	SLOT 2	SLOT 3	SLOT 4	SLOT 5	SLOT 6	SLOT 7	SLOT 8	SLOT 9	SLOT 10
5	60	83	5	2.0	20.0	38.0	62.0	68.0					
5.5	66	89	5	2.0	23.0	44.0	68.0	74.0					
6	72	95	6	2.0	14.0	26.0	50.0	74.0	80.0				
6.5	78	101	6	2.0	17.0	32.0	56.0	80.0	86.0				
7	84	107	6	2.0	20.0	38.0	62.0	86.0	92.0				
7.5	90	113	6	2.0	23.0	44.0	68.0	92.0	98.0				
8	96	119	7	2.0	14.0	26.0	50.0	74.0	98.0	104.0			
8.5	102	125	7	2.0	17.0	32.0	56.0	80.0	104.0	110.0			
9	108	131	7	2.0	20.0	38.0	62.0	86.0	110.0	116.0			
9.5	114	137	7	2.0	23.0	44.0	68.0	92.0	116.0	122.0			
10	120	143	8	2.0	14.0	26.0	50.0	74.0	98.0	122.0	128.0		
10.5	126	149	8	2.0	17.0	32.0	56.0	80.0	104.0	128.0	134.0		
11	132	155	8	2.0	20.0	38.0	62.0	86.0	110.0	134.0	140.0		
11.5	138	161	8	2.0	23.0	44.0	68.0	92.0	116.0	140.0	146.0		
12	144	167	9	2.0	14.0	26.0	50.0	74.0	98.0	122.0	146.0	152.0	
12.5	150	173	9	2.0	17.0	32.0	56.0	80.0	104.0	128.0	152.0	158.0	
13	156	179	9	2.0	20.0	38.0	62.0	86.0	110.0	134.0	158.0	164.0	
13.5	162	185	9	2.0	23.0	44.0	68.0	92.0	116.0	140.0	164.0	170.0	
14	168	191	10	2.0	14.0	26.0	50.0	74.0	98.0	122.0	146.0	170.0	176.0
14.5	174	197	10	2.0	17.0	32.0	56.0	80.0	104.0	128.0	152.0	176.0	182.0
15	180	203	10	2.0	20.0	38.0	62.0	86.0	110.0	134.0	158.0	182.0	188.0



ADV-XTREME

882 INTERIOR HIGH SPEED FABRIC DOOR

DWG. NO.	DATE:	
SHEET	BY:	