

MODEL 882 ADV-XTREME

INTERIOR/EXTERIOR HIGH SPEED, HIGH PERFORMANCE FABRIC DOOR



Low maintenance and built to last

HIGH PERFORMANCE, LOW MAINTENANCE DESIGN

- Strutted design allows for quick section replacement while reducing curtain deflection under pressure
- Springless design requires minimal interruption for maintenance
- Direct-mounted gear drive minimizes wear and tear
- Variable frequency drive eliminates sudden jolts from door start/stop
- Patented breakaway system design with impact detection and push button self-repair
- For exterior use with optional fabric upgrade

INSTALLER FRIENDLY

- Pre-assembled sub-assemblies for easier installation
- Plug and play wiring reduces need for licensed electrician

APPLICATIONS

- Manufacturing/Heavy Manufacturing
- Warehouse/Distribution
- Food and Beverage
- Cold Storage
- Auto/Transit



MODEL 882 ADV-XTREME

INTERIOR/EXTERIOR HIGH SPEED, HIGH PERFORMANCE FABRIC DOOR

STANDARD FEATURES OVERVIEW

MAX WIDTH	16'
MAX HEIGHT	15'
MAX OPENING SPEED	Up to 65" per second
MAX CLOSING SPEED	Up to 40" per second
BREAKAWAY SELF RESET	Yes
WIND LOAD*	Up to 4.0 psf
WIND STRUT	Metal strut
INTERIOR APPLICATION CURTAIN MATERIAL	2 layers of PVC-coated polyester with 1 layer of polyester weave
OPERATION	Direct drive motor and gearbox system with field changeable universal handing and door stop safety device
HOOD	Protection from debris and moisture
CONTROL PANEL	Variable frequency drive NEMA 4X cULus listed; Onboard self diagnostic and service reminder; Built-in padlockable fused disconnect
OBSTRUCTION SAFETY DETECTION	Infrared sensors mounted in-plane to the door curtain at 18" and 50" - 54" from floor
REVERSING SAFETY EDGE	Wireless reversing edge
AVAILABLE SUPPLY VOLTAGES**	208V AC 1 PH†, 220V AC 1 PH, 208V AC 3 PH†, 230V AC 3 PH, 460V AC 3 PH, 575V AC 3 PH† (†Requires stand-alone mounted transformer)
HINGED GUIDES	Provide easy access for maintenance

*Wind load is the ultimate pressure tested at door width of 16'.

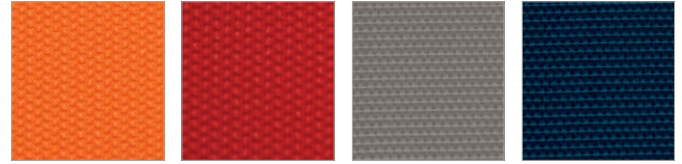
**Single phase available up to 10' doors.

OPTIONS

- **20" high vision panels** – spaced evenly across width of door
- **Multiple actuation options** – push button, motion detector, radio control, key switch, pull switch, loop detector, treadle switch. Wireless options available
- **Signaling devices** – red/green LED warning light, horn/strobe combination, rotating warning light
- **Programmable LED Lighting Package** – 3' tall light bar with red, yellow, green lights
- **Exterior/Interior application curtain material upgrade** – 3 layers of PVC-coated polyester with 2 layers of polyester weave
- **For food and beverage applications** – an FDA-compliant fabric option is available
- **Sloped hood and non-drive end cover** – protection from debris and moisture
- **Light curtain** – front or rear mounted; available in 3' and 6' models

CURTAIN COLOR OPTIONS

Exterior applications



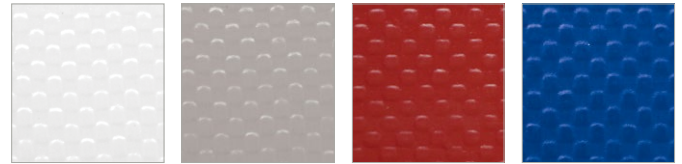
Orange

Red

Gray

Blue

Interior applications

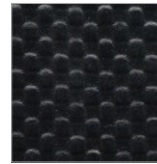


White

Gray

Red

Blue



Black



Yellow

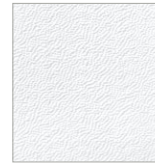


Orange

FDA-compliant applications (optional)



FDA Royal Blue



FDA White

Standard color for guides and bottom bar is yellow.

Approximately 200 optional RAL powder coat colors are also available.



Actual colors may vary from brochure due to fluctuations in the printing process. Always request a color sample from your Wayne Dalton Dealer for accurate color matching.

Wayne Dalton.

2501 S. State Hwy. 121 Bus., Ste 200
Lewisville, TX 75067

wayne-dalton.com



© 2025 Wayne Dalton, a Division of Overhead Door Corporation. Consistent with our policy of continuing product improvement, we reserve the right to change product specifications without notice or obligation.
Item W900-1053 03/25