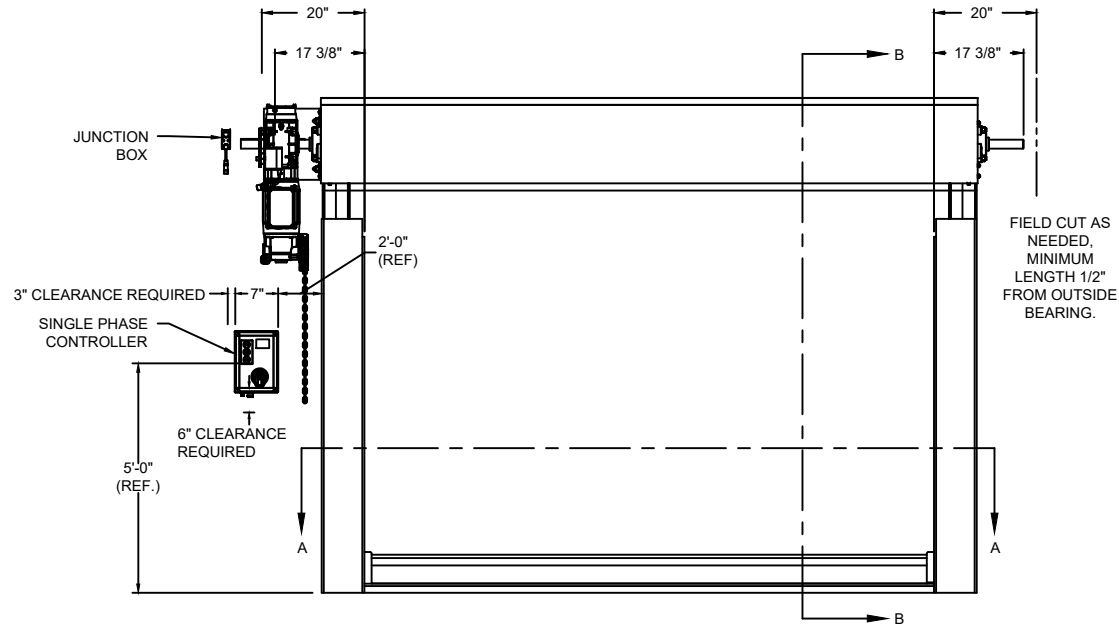


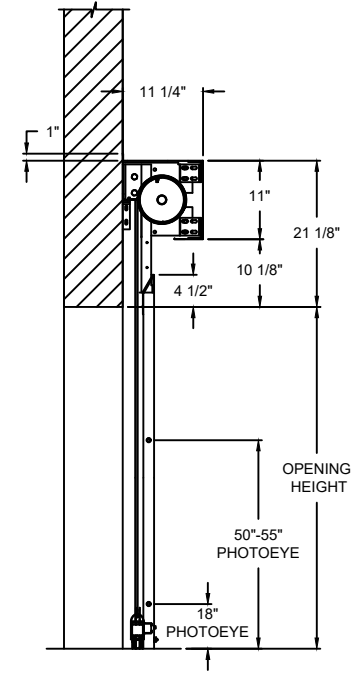
BOTTOM BAR DETAIL

OPTIONS

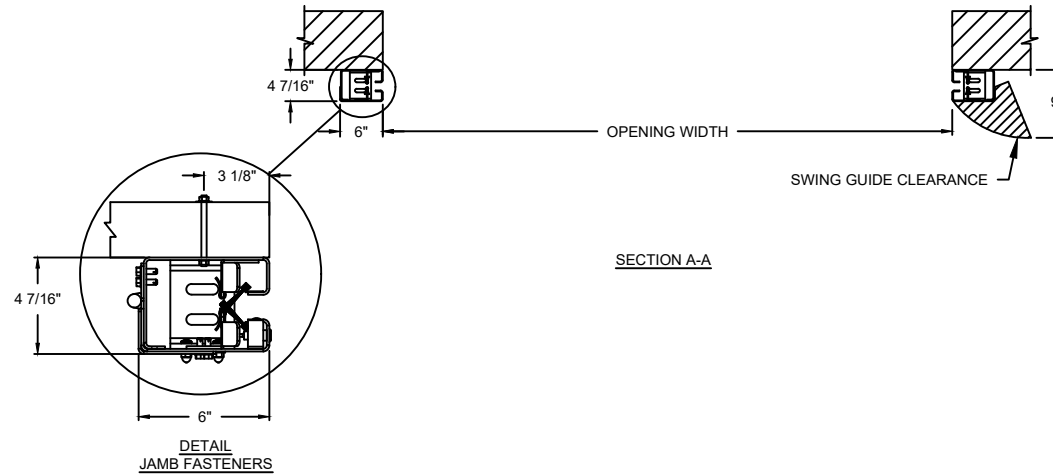
OPENING WIDTH*	
OPENING HEIGHT*	
WINDOW OPTIONS	<input type="checkbox"/> 20" H VISION
VOLTS OPTIONS	<input type="checkbox"/> 115V 1-PHASE <input type="checkbox"/> 230V 1-PHASE
HOOD OPTIONS	<input type="checkbox"/> SLOPED <input type="checkbox"/> STANDARD
HOUSING OPTIONS	<input type="checkbox"/> WITH MOTOR HOUSING <input type="checkbox"/> WITHOUT MOTOR HOUSING
HEADROOM OPTIONS	<input type="checkbox"/> BREAK COVER (22 1/8" H)



ELEVATION



SECTION B-B



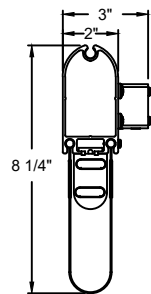
SECTION A-A

COMPONENT	MATERIAL	OPERATION	NOTES:
HOOD	22 GA. STEEL	MOTOR LH	1. WINDLOAD 7.5 P.S.F ULTIMATE @ 10' WIDE * PLEASE REFER TO WALL GUIDE FOR COMPLETE LIST OF BUILDING SPECIFICATIONS
CURTAIN	2 THIN LAYER PVC COATED POLYESTER WITH 1 LAYER POLYESTER WEAVE		
GUIDES	HIGH STRENGTH STEEL		
BOTTOM BAR	EXTRUDED ALUMINUM		

# ADV-XTREME

881 INTERIOR HIGH SPEED FABRIC DOOR

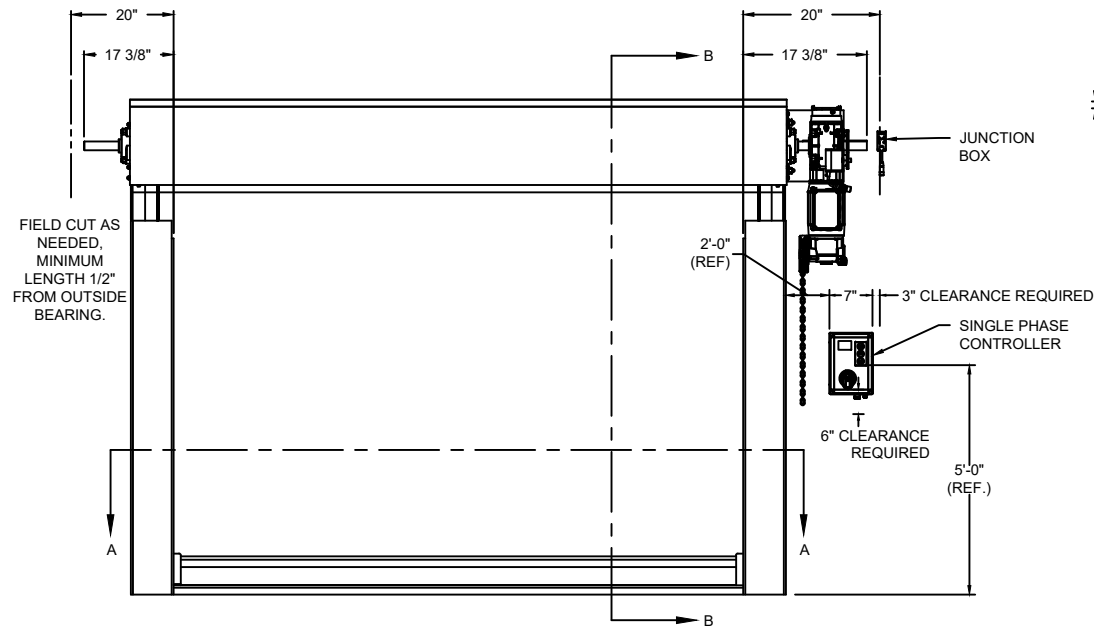
DWG. NO.	DATE:	Wayne Dalton.
SHEET	BY:	



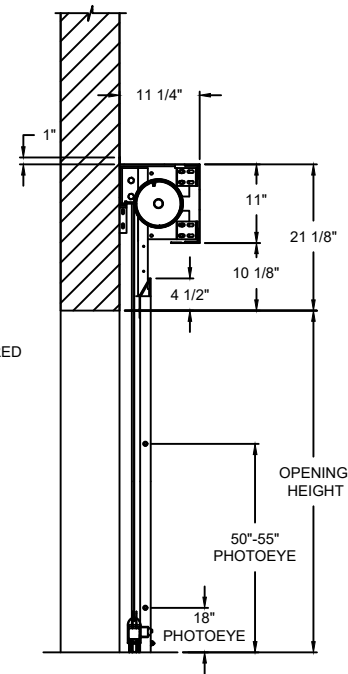
BOTTOM BAR DETAIL

**OPTIONS**

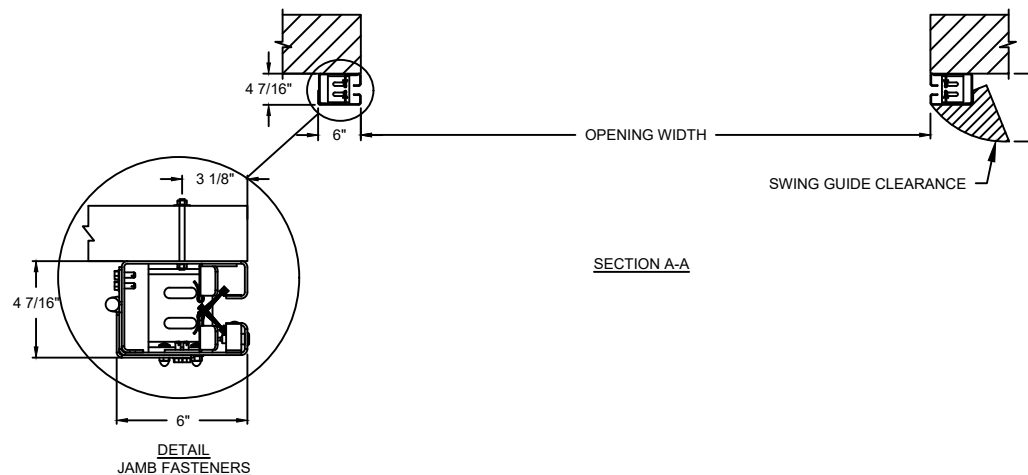
OPENING WIDTH*	
OPENING HEIGHT*	
WINDOW OPTIONS	<input type="checkbox"/> 20" H VISION
VOLTS OPTIONS	<input type="checkbox"/> 115V 1-PHASE <input type="checkbox"/> 230V 1-PHASE
HOOD OPTIONS	<input type="checkbox"/> SLOPED <input type="checkbox"/> STANDARD
HOUSING OPTIONS	<input type="checkbox"/> WITH MOTOR HOUSING <input type="checkbox"/> WITHOUT MOTOR HOUSING
HEADROOM OPTIONS	<input type="checkbox"/> BREAK COVER (22 1/8" H)



ELEVATION



SECTION B-B



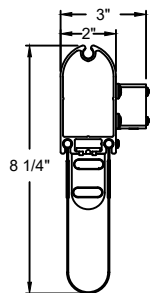
SECTION A-A

COMPONENT	MATERIAL	OPERATION	NOTES:
HOOD	22 GA. STEEL	MOTOR RH	1. WINDLOAD 7.5 P.S.F ULTIMATE @ 10' WIDE * PLEASE REFER TO WALL GUIDE FOR COMPLETE LIST OF BUILDING SPECIFICATIONS
CURTAIN	2 THIN LAYER PVC COATED POLYESTER WITH 1 LAYER POLYESTER WEAVE		
GUIDES	HIGH STRENGTH STEEL		
BOTTOM BAR	EXTRUDED ALUMINUM		

# ADV-XTREME

881 INTERIOR HIGH SPEED FABRIC DOOR

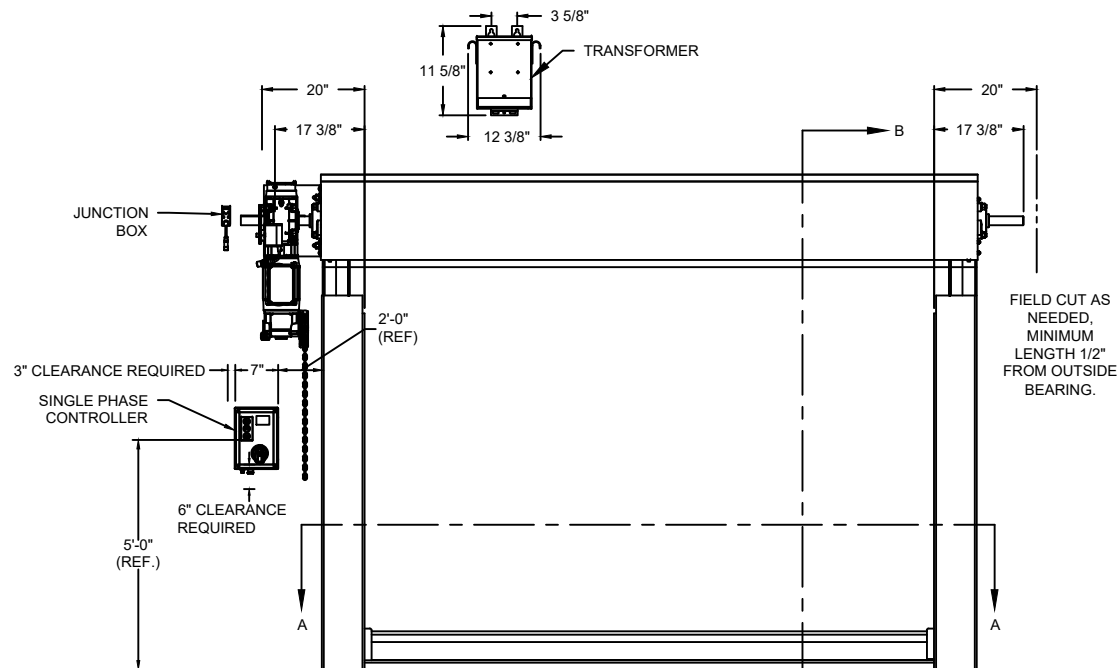
DWG. NO.	DATE:	<b>Wayne Dalton.</b>
SHEET	BY:	



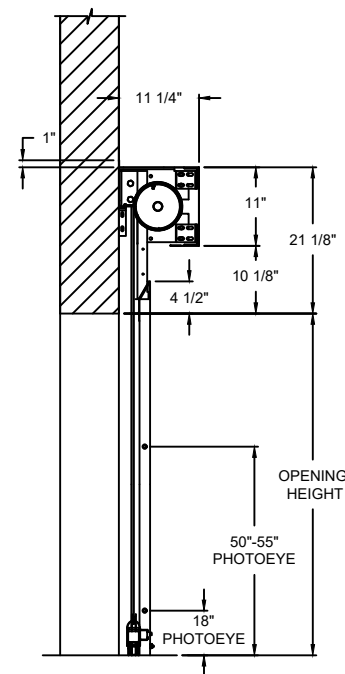
BOTTOM BAR DETAIL

# OPTIONS

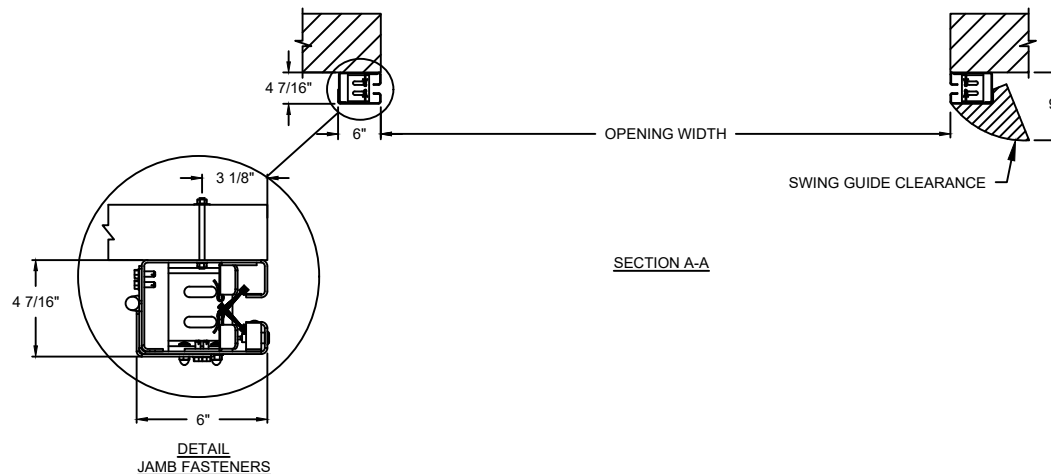
OPENING WIDTH*	
OPENING HEIGHT*	
WINDOW OPTIONS	<input type="checkbox"/> 20" H VISION
HOOD OPTIONS	<input type="checkbox"/> SLOPED <input type="checkbox"/> STANDARD
HOUSING OPTIONS	<input type="checkbox"/> WITH MOTOR HOUSING <input type="checkbox"/> WITHOUT MOTOR HOUSING
HEADROOM OPTIONS	<input type="checkbox"/> BREAK COVER (22 1/8" H)



ELEVATION



SECTION B-B



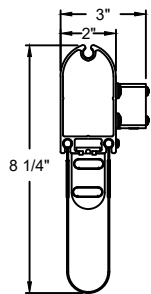
SECTION A-A

DETAIL  
JAMB FASTENERS

COMPONENT	MATERIAL	OPERATION	NOTES:
HOOD	22 GA. STEEL	MOTOR LH 208V 1-PHASE VIA TRANSFORMER (190-270V RANGE)	1. WINDLOAD 7.5 P.S.F ULTIMATE @ 10' WIDE * PLEASE REFER TO WALL GUIDE FOR COMPLETE LIST OF BUILDING SPECIFICATIONS
CURTAIN	2 THIN LAYER PVC COATED POLYESTER WITH 1 LAYER POLYESTER WEAVE		
GUIDES	HIGH STRENGTH STEEL		
BOTTOM BAR	EXTRUDED ALUMINUM		

# ADV-XTREME 881 INTERIOR HIGH SPEED FABRIC DOOR

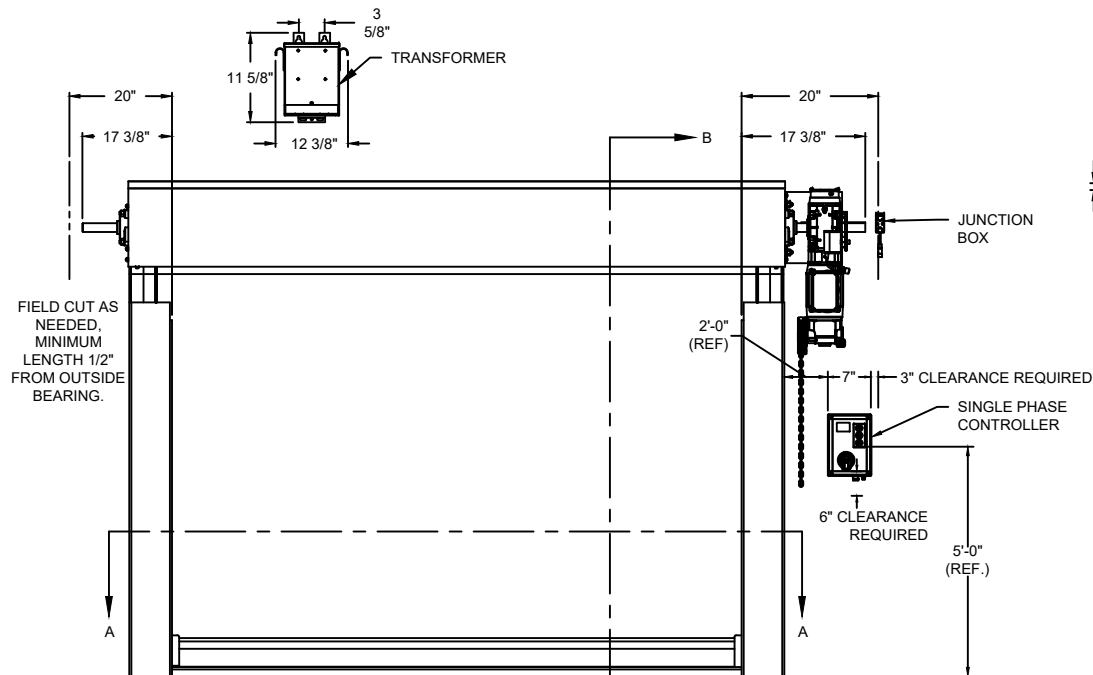
DWG. NO.	DATE:	Wayne Dalton.
SHEET	BY:	



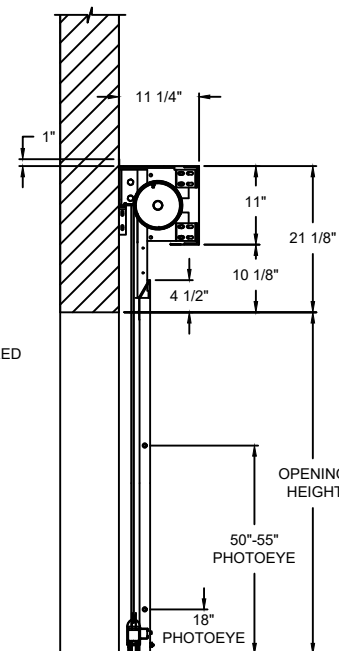
BOTTOM BAR DETAIL

OPTIONS

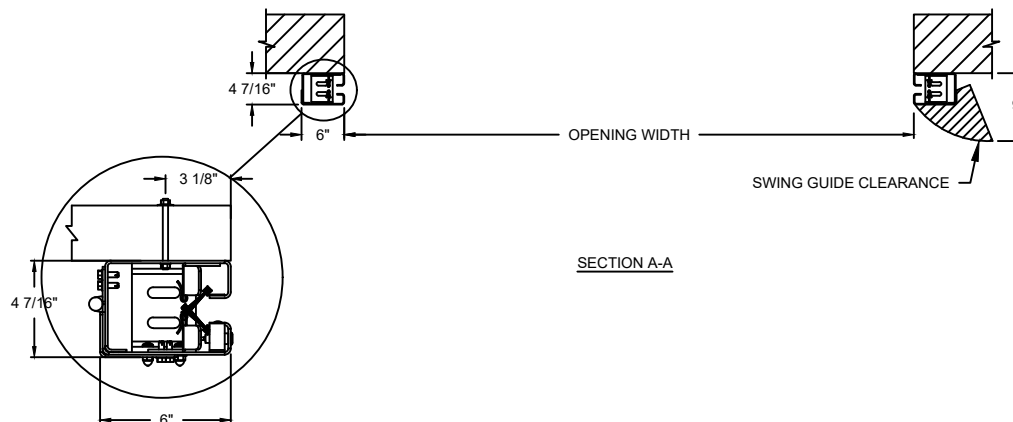
OPENING WIDTH*	
OPENING HEIGHT*	
WINDOW OPTIONS	<input type="checkbox"/> 20" H VISION
HOOD OPTIONS	<input type="checkbox"/> SLOPED <input type="checkbox"/> STANDARD
HOUSING OPTIONS	<input type="checkbox"/> WITH MOTOR HOUSING <input type="checkbox"/> WITHOUT MOTOR HOUSING
HEADROOM OPTIONS	<input type="checkbox"/> BREAK COVER (22 1/8" H)



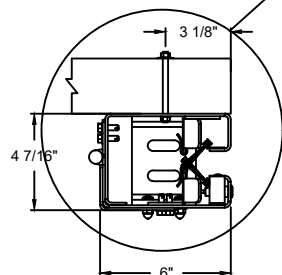
ELEVATION



SECTION B-B



SECTION A-A



DETAIL  
JAMB FASTENERS

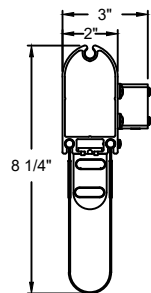
MODEL	STANDARD MAX. VALUES	
	WIDTH	HEIGHT
881	14'	14'

COMPONENT	MATERIAL	OPERATION	NOTES:
HOOD	22 GA. STEEL	MOTOR RH 208V 1-PHASE VIA TRANSFORMER (190-270V RANGE)	1. WINDLOAD 7.5 P.S.F ULTIMATE @ 10' WIDE * PLEASE REFER TO WALL GUIDE FOR COMPLETE LIST OF BUILDING SPECIFICATIONS
CURTAIN	2 THIN LAYER PVC COATED POLYESTER WITH 1 LAYER POLYESTER WEAVE		
GUIDES	HIGH STRENGTH STEEL		
BOTTOM BAR	EXTRUDED ALUMINUM		

# ADV-XTREME

881 INTERIOR HIGH SPEED FABRIC DOOR

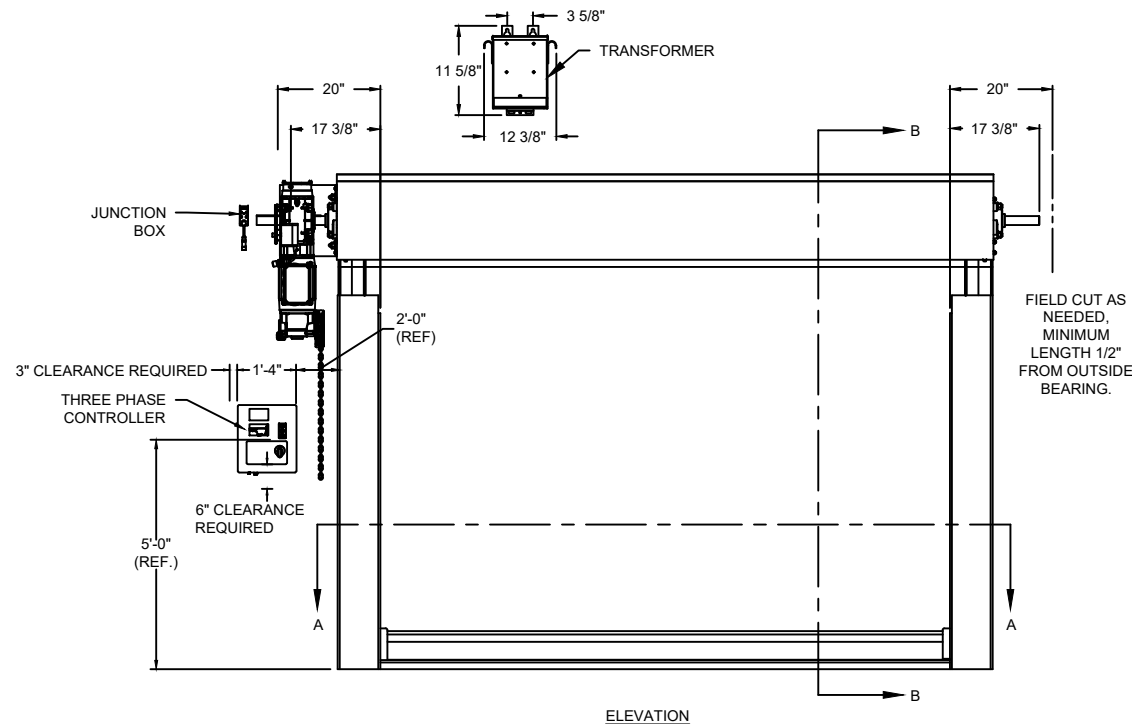
DWG. NO.	DATE:	<b>Wayne Dalton.</b>
SHEET	BY:	



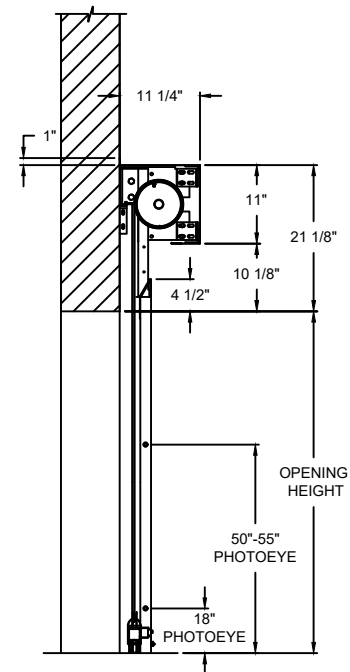
BOTTOM BAR DETAIL

# OPTIONS

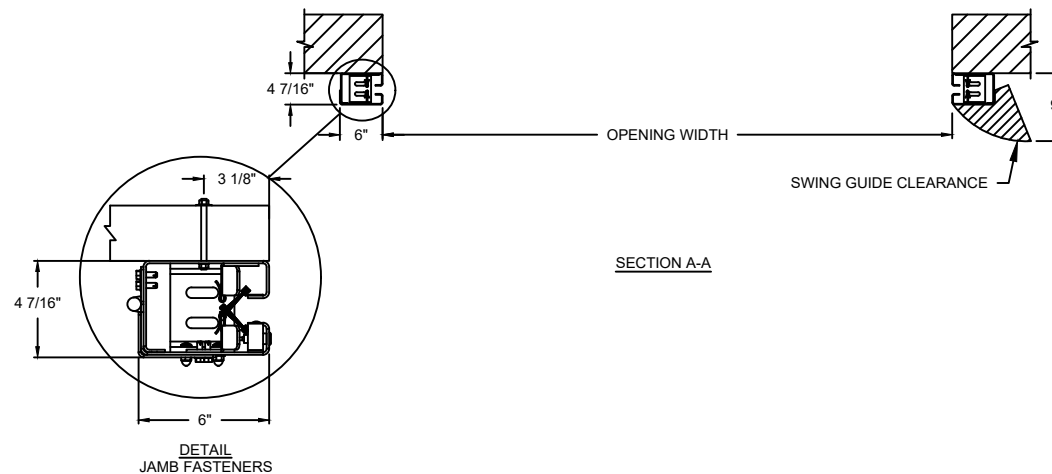
OPENING WIDTH*	
OPENING HEIGHT*	
WINDOW OPTIONS	<input type="checkbox"/> 20" H VISION
HOOD OPTIONS	<input type="checkbox"/> SLOPED <input type="checkbox"/> STANDARD
HOUSING OPTIONS	<input type="checkbox"/> WITH MOTOR HOUSING <input type="checkbox"/> WITHOUT MOTOR HOUSING
HEADROOM OPTIONS	<input type="checkbox"/> BREAK COVER (22 1/8" H)



ELEVATION



SECTION B-B



SECTION A-A

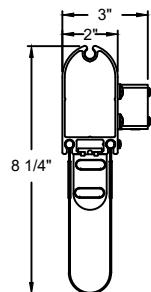
DETAIL  
JAMB FASTENERS

COMPONENT	MATERIAL	OPERATION	NOTES:
HOOD	22 GA. STEEL	MOTOR LH 208V 3-PHASE VIA TRANSFORMER (190-270V RANGE)	1. WINDLOAD 7.5 P.S.F ULTIMATE @ 10' WIDE * PLEASE REFER TO WALL GUIDE FOR COMPLETE LIST OF BUILDING SPECIFICATIONS
CURTAIN	2 THIN LAYER PVC COATED POLYESTER WITH 1 LAYER POLYESTER WEAVE		
GUIDES	HIGH STRENGTH STEEL		
BOTTOM BAR	EXTRUDED ALUMINUM		

# ADV-XTREME

881 INTERIOR HIGH SPEED FABRIC DOOR

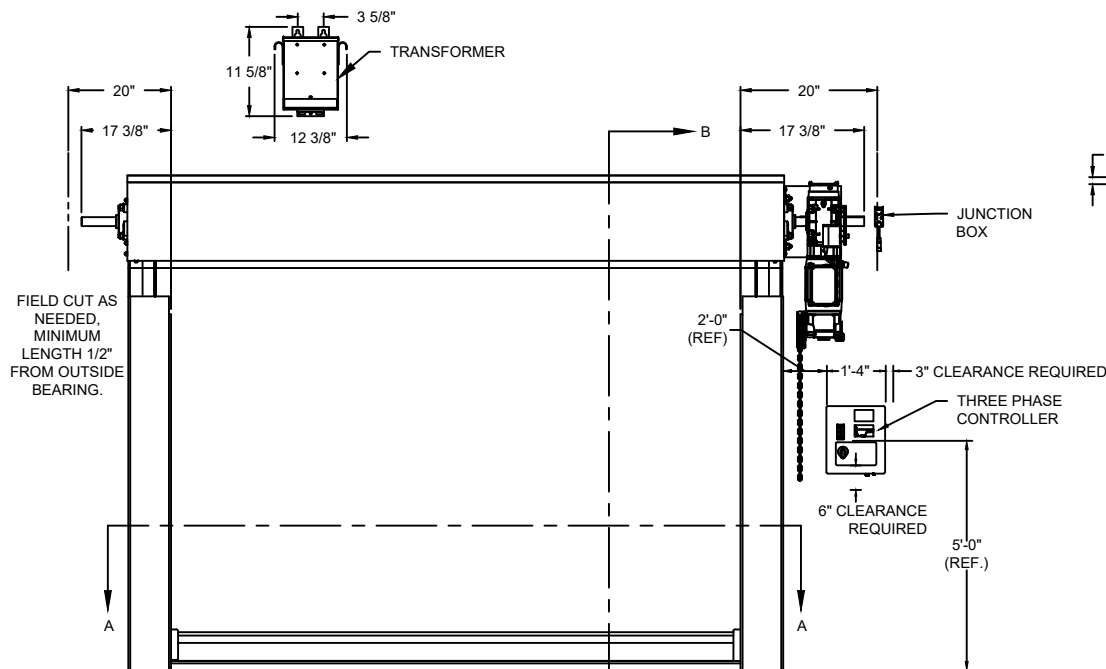
DWG. NO.	DATE:	<b>Wayne Dalton.</b>
SHEET	BY:	



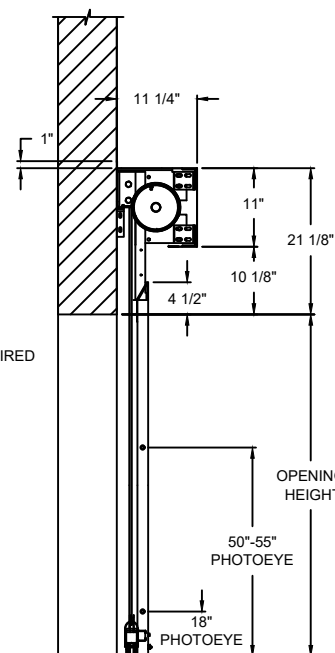
BOTTOM BAR DETAIL

OPTIONS

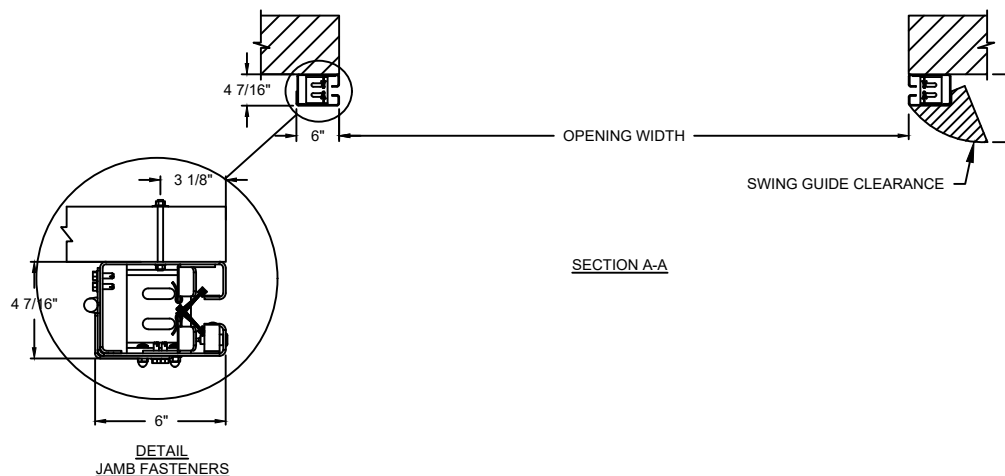
OPENING WIDTH*	
OPENING HEIGHT*	
WINDOW OPTIONS	<input type="checkbox"/> 20" H VISION
HOOD OPTIONS	<input type="checkbox"/> SLOPED <input type="checkbox"/> STANDARD
HOUSING OPTIONS	<input type="checkbox"/> WITH MOTOR HOUSING <input type="checkbox"/> WITHOUT MOTOR HOUSING
HEADROOM OPTIONS	<input type="checkbox"/> BREAK COVER (22 1/8" H)



ELEVATION



SECTION B-B



SECTION A-A

DETAIL  
JAMB FASTENERS

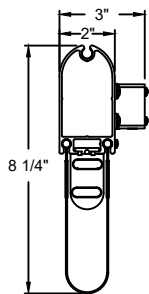
MODEL	STANDARD MAX. VALUES	
	WIDTH	HEIGHT
881	14'	14'

COMPONENT	MATERIAL	OPERATION	NOTES:
HOOD	22 GA. STEEL	MOTOR RH 208V 3-PHASE VIA TRANSFORMER (190-270V RANGE)	1. WINDLOAD 7.5 P.S.F ULTIMATE @ 10' WIDE * PLEASE REFER TO WALL GUIDE FOR COMPLETE LIST OF BUILDING SPECIFICATIONS
CURTAIN	2 THIN LAYER PVC COATED POLYESTER WITH 1 LAYER POLYESTER WEAVE		
GUIDES	HIGH STRENGTH STEEL		
BOTTOM BAR	EXTRUDED ALUMINUM		

# ADV-XTREME

881 INTERIOR HIGH SPEED FABRIC DOOR

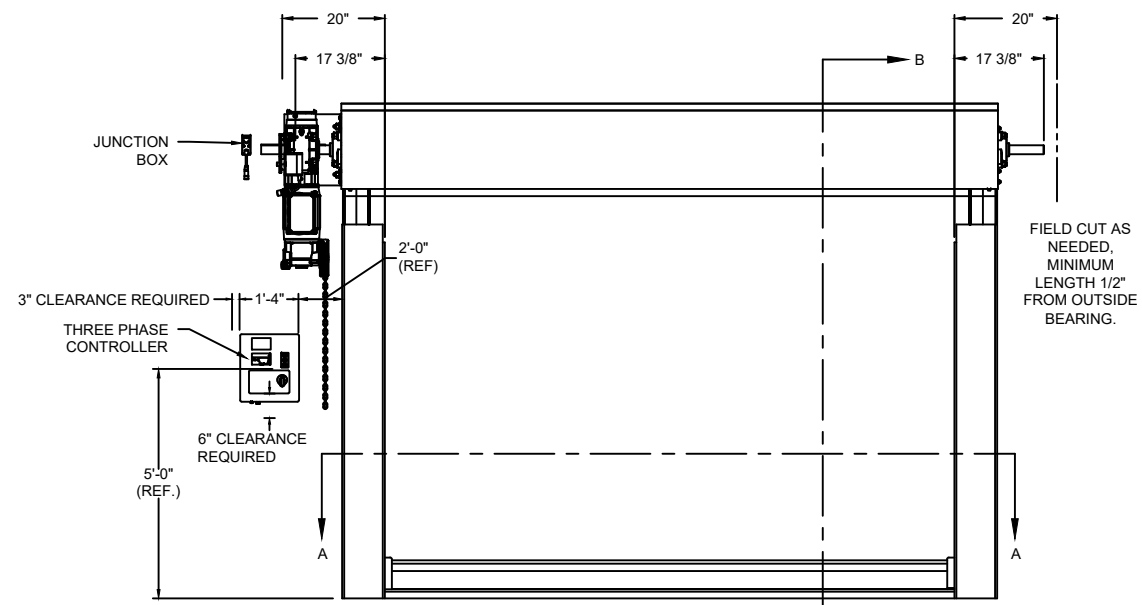
DWG. NO.	DATE:	<b>Wayne Dalton.</b>
SHEET	BY:	



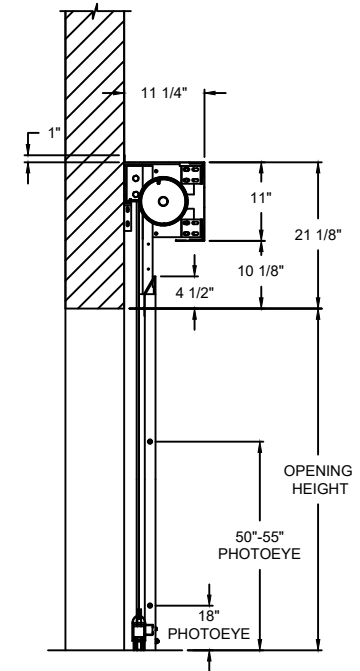
BOTTOM BAR DETAIL

OPTIONS

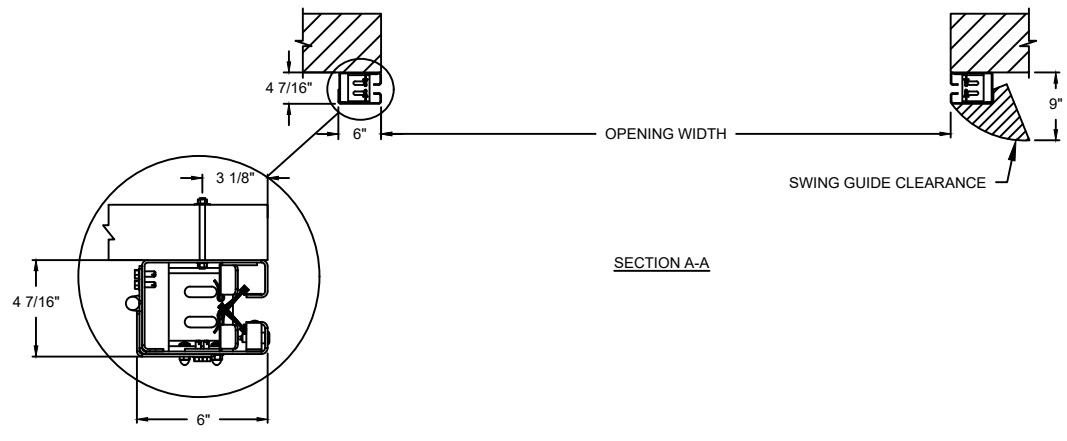
OPENING WIDTH*	
OPENING HEIGHT*	
WINDOW OPTIONS	<input type="checkbox"/> 20" H VISION
VOLTS OPTIONS	<input type="checkbox"/> 230V 3-PHASE <input type="checkbox"/> 460V 3-PHASE
HOOD OPTIONS	<input type="checkbox"/> SLOPED <input type="checkbox"/> STANDARD
HOUSING OPTIONS	<input type="checkbox"/> WITH MOTOR HOUSING <input type="checkbox"/> WITHOUT MOTOR HOUSING
HEADROOM OPTIONS	<input type="checkbox"/> BREAK COVER (22 1/8" H)



ELEVATION



SECTION B-B



SECTION A-A

DETAIL JAMB FASTENERS

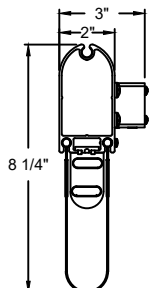
COMPONENT	MATERIAL	OPERATION	NOTES:
HOOD	22 GA. STEEL	MOTOR LH	1. WINDLOAD 7.5 P.S.F ULTIMATE @ 10' WIDE * PLEASE REFER TO WALL GUIDE FOR COMPLETE LIST OF BUILDING SPECIFICATIONS
CURTAIN	2 THIN LAYER PVC COATED POLYESTER WITH 1 LAYER POLYESTER WEAVE		
GUIDES	HIGH STRENGTH STEEL		
BOTTOM BAR	EXTRUDED ALUMINUM		

MODEL	STANDARD MAX. VALUES	
	WIDTH	HEIGHT
881	14'	14'

# ADV-XTREME

881 INTERIOR HIGH SPEED FABRIC DOOR

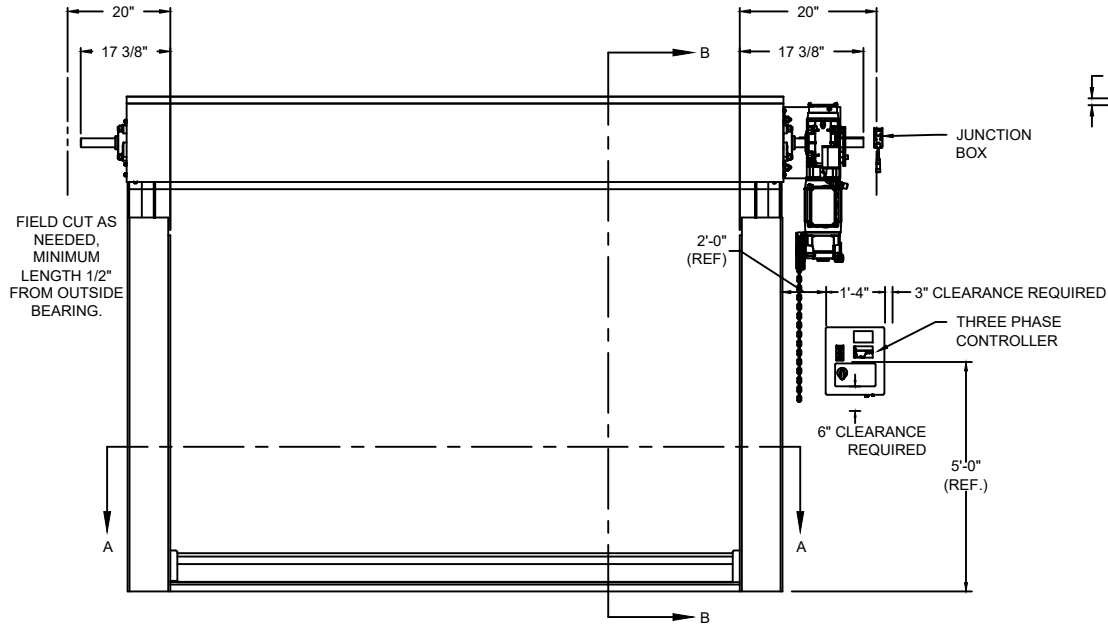
DWG. NO.	DATE:	
SHEET	BY:	



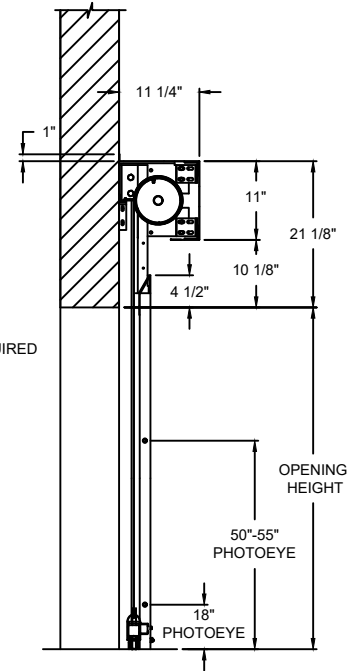
BOTTOM BAR DETAIL

OPTIONS

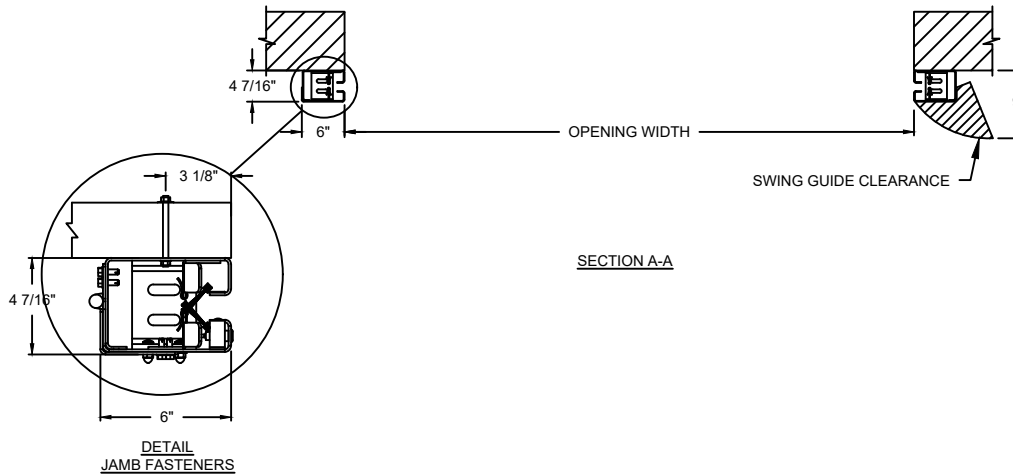
OPENING WIDTH*	
OPENING HEIGHT*	
WINDOW OPTIONS	<input type="checkbox"/> 20" H VISION
VOLTS OPTIONS	<input type="checkbox"/> 230V 3-PHASE <input type="checkbox"/> 460V 3-PHASE
HOOD OPTIONS	<input type="checkbox"/> SLOPED <input type="checkbox"/> STANDARD
HOUSING OPTIONS	<input type="checkbox"/> WITH MOTOR HOUSING <input type="checkbox"/> WITHOUT MOTOR HOUSING
HEADROOM OPTIONS	<input type="checkbox"/> BREAK COVER (22 1/8" H)



ELEVATION



SECTION B-B



SECTION A-A

DETAIL  
JAMB FASTENERS

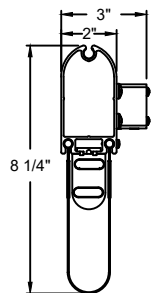
COMPONENT	MATERIAL	OPERATION	NOTES:
HOOD	22 GA. STEEL	MOTOR RH	1. WINDLOAD 7.5 P.S.F ULTIMATE @ 10' WIDE * PLEASE REFER TO WALL GUIDE FOR COMPLETE LIST OF BUILDING SPECIFICATIONS
CURTAIN	2 THIN LAYER PVC COATED POLYESTER WITH 1 LAYER POLYESTER WEAVE		
GUIDES	HIGH STRENGTH STEEL		
BOTTOM BAR	EXTRUDED ALUMINUM		

# ADV-XTREME

881 INTERIOR HIGH SPEED FABRIC DOOR

DWG. NO.	DATE:	<b>Wayne Dalton.</b>
SHEET	BY:	

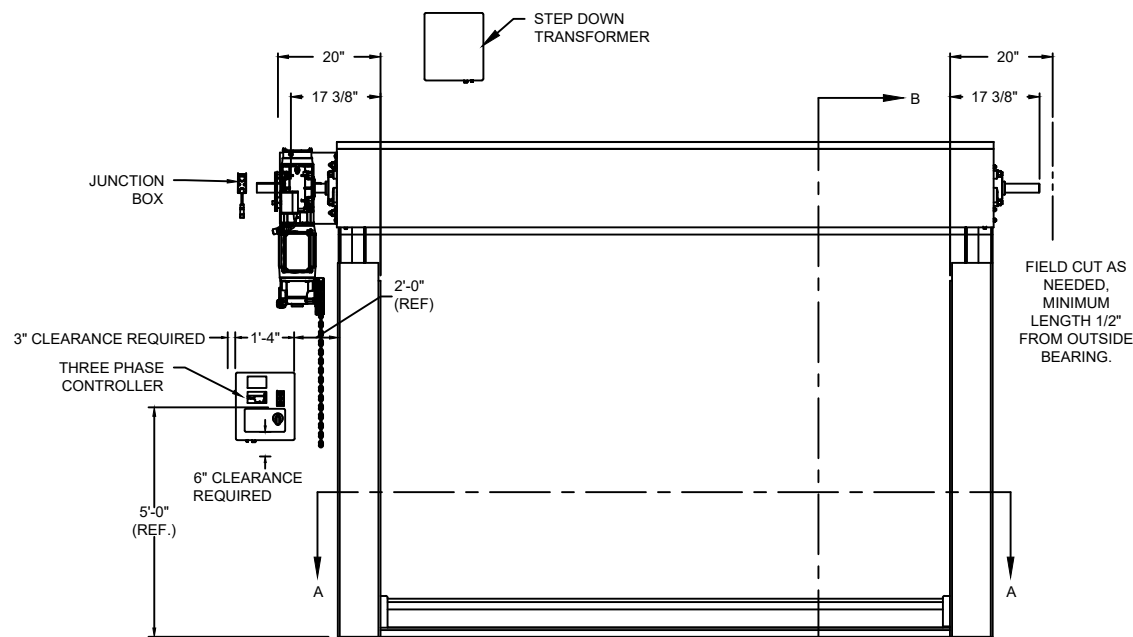




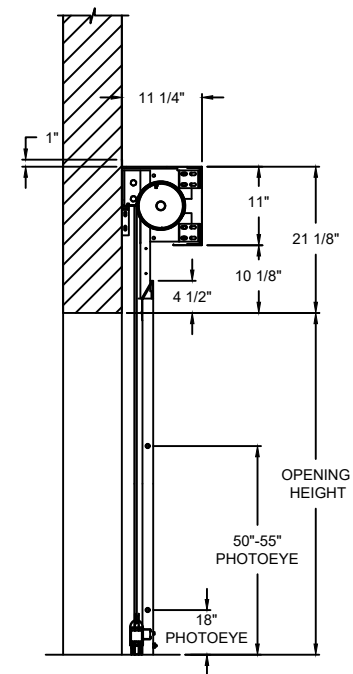
BOTTOM BAR DETAIL

# OPTIONS

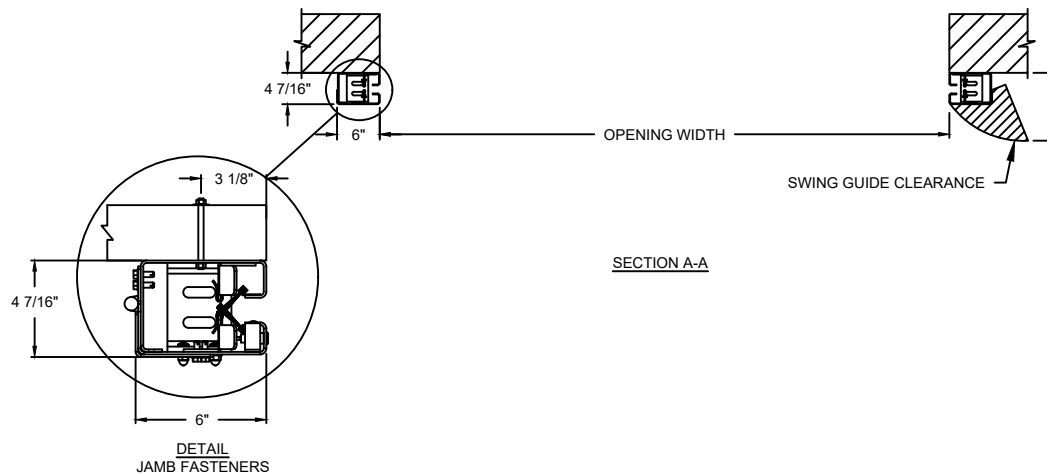
OPENING WIDTH*	
OPENING HEIGHT*	
WINDOW OPTIONS	<input type="checkbox"/> 20" H VISION
HOOD OPTIONS	<input type="checkbox"/> SLOPED <input type="checkbox"/> STANDARD
HOUSING OPTIONS	<input type="checkbox"/> WITH MOTOR HOUSING <input type="checkbox"/> WITHOUT MOTOR HOUSING
HEADROOM OPTIONS	<input type="checkbox"/> BREAK COVER (22 1/8" H)



ELEVATION



SECTION B-B

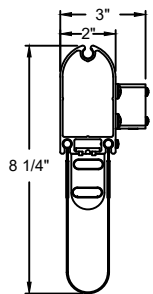


SECTION A-A

COMPONENT	MATERIAL	OPERATION	NOTES:
HOOD	22 GA. STEEL	MOTOR LH 575V 3-PHASE	1. WINDLOAD 7.5 P.S.F ULTIMATE @ 10' WIDE * PLEASE REFER TO WALL GUIDE FOR COMPLETE LIST OF BUILDING SPECIFICATIONS
CURTAIN	2 THIN LAYER PVC COATED POLYESTER WITH 1 LAYER POLYESTER WEAVE		
GUIDES	HIGH STRENGTH STEEL		
BOTTOM BAR	EXTRUDED ALUMINUM		

# ADV-XTREME 881 INTERIOR HIGH SPEED FABRIC DOOR

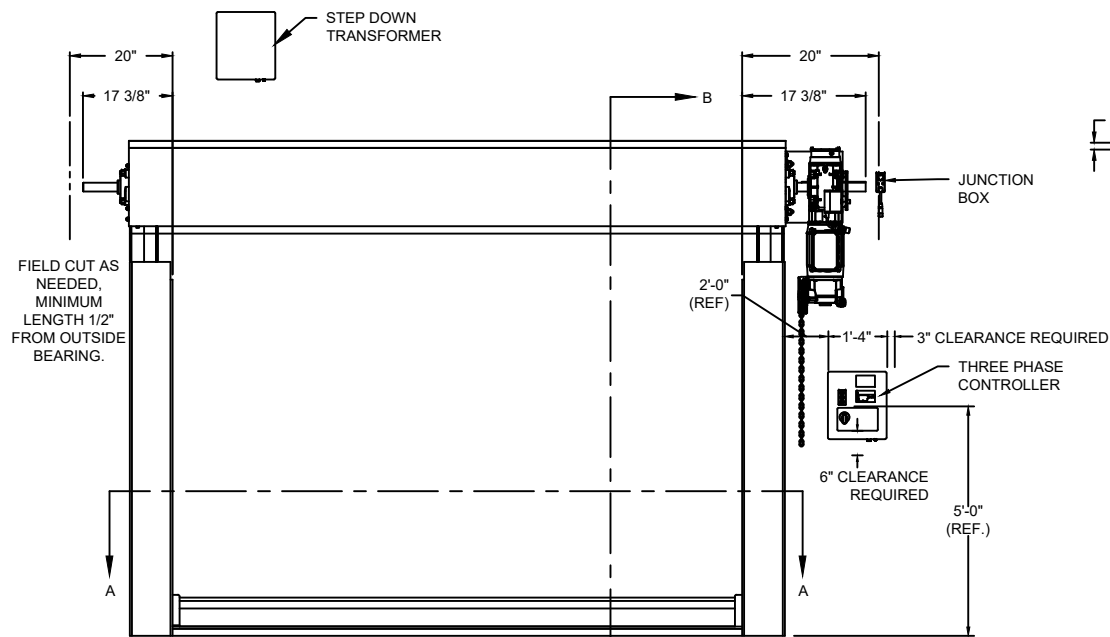
DWG. NO.	DATE:	Wayne Dalton.
SHEET	BY:	



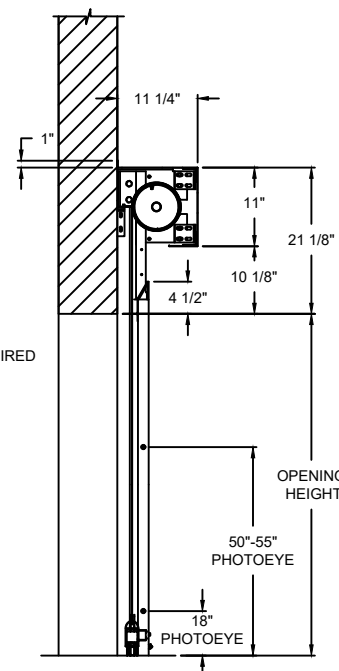
BOTTOM BAR DETAIL

OPTIONS

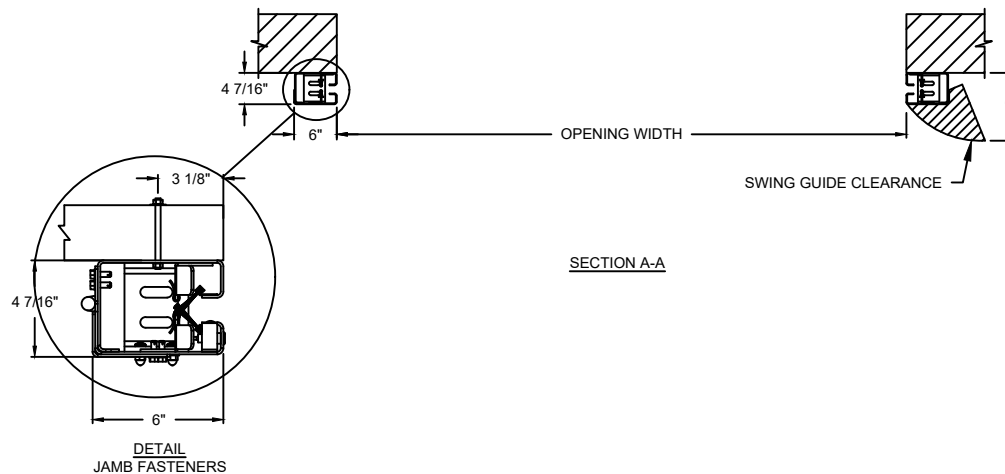
OPENING WIDTH*	
OPENING HEIGHT*	
WINDOW OPTIONS	<input type="checkbox"/> 20" H VISION
HOOD OPTIONS	<input type="checkbox"/> SLOPED <input type="checkbox"/> STANDARD
HOUSING OPTIONS	<input type="checkbox"/> WITH MOTOR HOUSING <input type="checkbox"/> WITHOUT MOTOR HOUSING
HEADROOM OPTIONS	<input type="checkbox"/> BREAK COVER (22 1/8" H)



ELEVATION



SECTION B-B



SECTION A-A

DETAIL  
JAMB FASTENERS

MODEL	STANDARD MAX. VALUES	
	WIDTH	HEIGHT
881	14'	14'

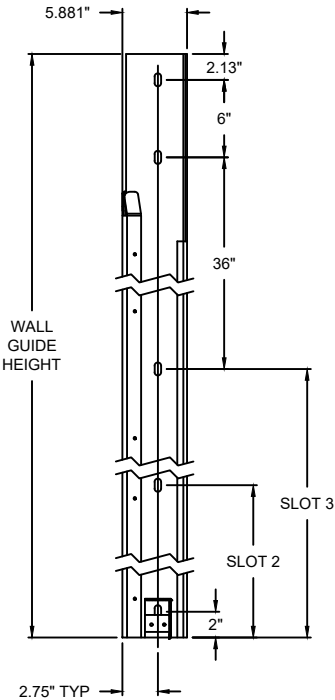
COMPONENT	MATERIAL	OPERATION	NOTES:
HOOD	22 GA. STEEL	MOTOR RH 575V 3-PHASE	1. WINDLOAD 7.5 P.S.F ULTIMATE @ 10' WIDE * PLEASE REFER TO WALL GUIDE FOR COMPLETE LIST OF BUILDING SPECIFICATIONS
CURTAIN	2 THIN LAYER PVC COATED POLYESTER WITH 1 LAYER POLYESTER WEAVE		
GUIDES	HIGH STRENGTH STEEL		
BOTTOM BAR	EXTRUDED ALUMINUM		

# ADV-XTREME

881 INTERIOR HIGH SPEED FABRIC DOOR

DWG. NO.	DATE:	<b>Wayne Dalton.</b>
SHEET	BY:	

881 WALL GUIDE NO SPLICE										
BUILD HEIGHT (FT)	BUILD HEIGHT (IN)	WALL GUIDE HEIGHT (IN)	NUMBER OF SLOTS	SLOT 1	SLOT 2	SLOT 3	SLOT 4	SLOT 5	SLOT 6	SLOT 7
5	60	80	4	2.000	36.938	71.875	77.875			
5.5	66	86	5	2.000	21.938	41.875	77.875	83.875		
6	72	92	5	2.000	24.938	47.875	83.875	89.875		
6.5	78	98	5	2.000	27.938	53.875	89.875	95.875		
7	84	104	5	2.000	30.938	59.875	95.875	101.875		
7.5	90	110	5	2.000	33.938	65.875	101.875	107.875		
8	96	116	5	2.000	36.938	71.875	107.875	113.875		
8.5	102	122	6	2.000	21.938	41.875	77.875	113.875	119.875	
9	108	128	6	2.000	24.938	47.875	83.875	119.875	125.875	
9.5	114	134	6	2.000	27.938	53.875	89.875	125.875	131.875	
10	120	140	6	2.000	30.938	59.875	95.875	131.875	137.875	
10.5	126	146	6	2.000	33.938	65.875	101.875	137.875	143.875	
11	132	152	6	2.000	36.938	71.875	107.875	143.875	149.875	
11.5	138	158	7	2.000	21.938	41.875	77.875	113.875	149.875	155.875
12	144	164	7	2.000	24.938	47.875	83.875	119.875	155.875	161.875
12.5	150	170	7	2.000	27.938	53.875	89.875	125.875	161.875	167.875
13	156	176	7	2.000	30.938	59.875	95.875	131.875	167.875	173.875
13.5	162	182	7	2.000	33.938	65.875	101.875	137.875	173.875	179.875
14	168	188	7	2.000	36.938	71.875	107.875	143.875	179.875	185.875



ADV-XTREME

881 INTERIOR HIGH SPEED FABRIC DOOR