

COMPONENT	MATERIAL	OPERATION	NOTES:
HOOD	22 GA. STEEL	MOTOR LH	1. WINDLOAD 3 P.S.F ULTIMATE @ 12" WIDE * PLEASE REFER TO WALL GUIDE FOR COMPLETE LIST OF BUILDING SPECIFICATIONS
CURTAIN	2 THIN LAYER PVC COATED POLYESTER WITH 1 LAYER POLYESTER WEAVE		
GUIDES	HIGH STRENGTH STEEL		
BOTTOM BAR	FLEXIBLE W/ DETACHABLE BOTTOM SEAL		

**ADV-XTREME®**

880 FLEXIBLE BOTTOM INTERIOR  
HIGH SPEED FABRIC DOOR

DWG. NO.	DATE:	<b>Wayne Dalton.</b>
SHEET	BY:	

VELCRO HOT AIR WELDING ENTIRE LENGTH

3/8"

1 1/2"

1/2"

3/8"

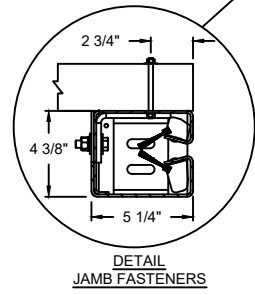
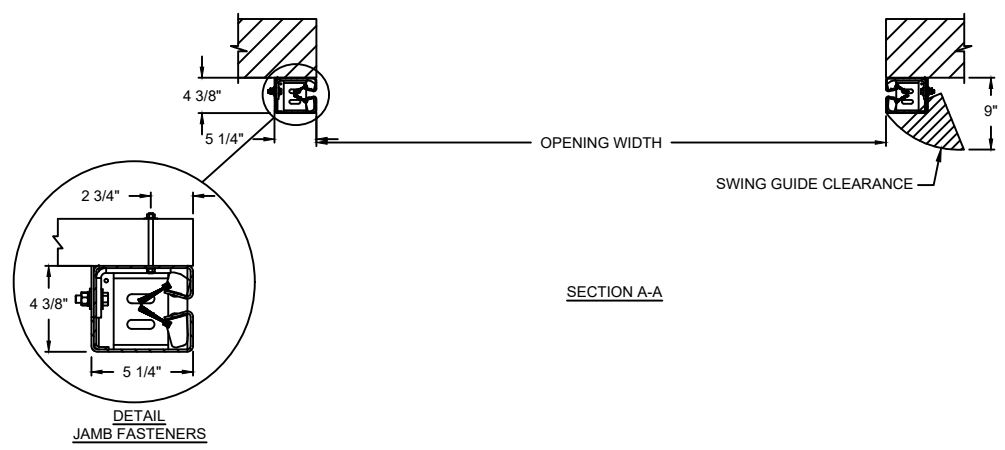
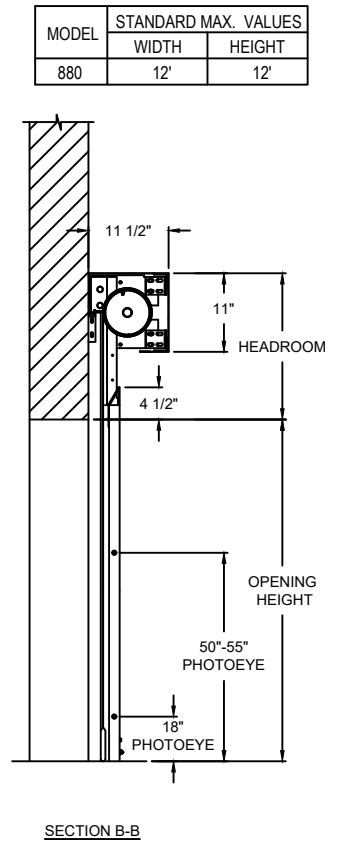
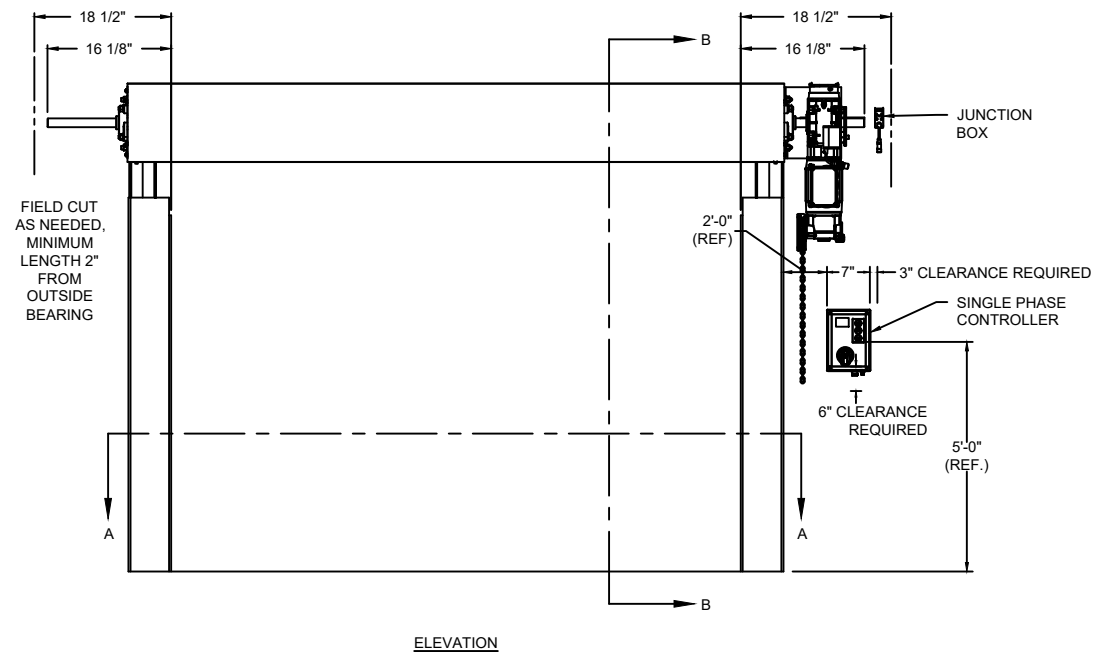
6"

1 1/4"

**BOTTOM BAR DETAIL**

**OPTIONS**

OPENING WIDTH*	
OPENING HEIGHT*	
WINDOW OPTIONS	<input type="checkbox"/> 20" H VISION
VOLTS OPTIONS	<input type="checkbox"/> 115V 1-PHASE <input type="checkbox"/> 230V 1-PHASE
HOUSING OPTIONS	<input type="checkbox"/> WITH MOTOR HOUSING <input type="checkbox"/> WITHOUT MOTOR HOUSING

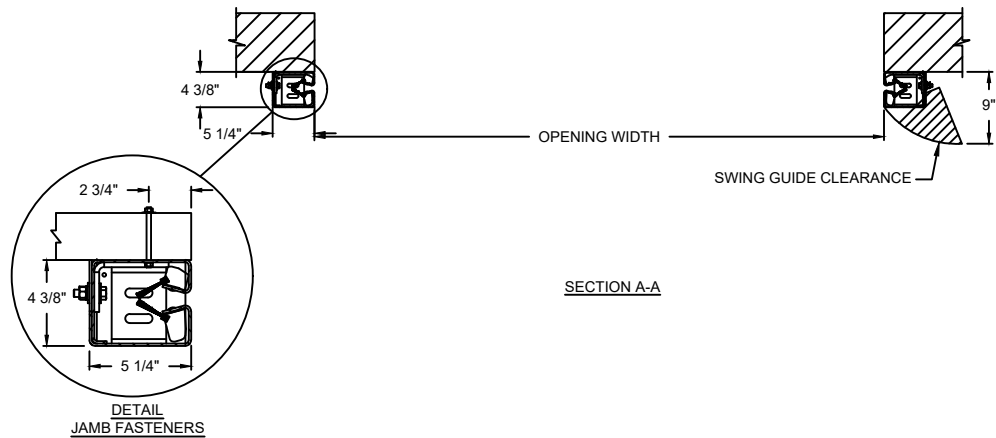
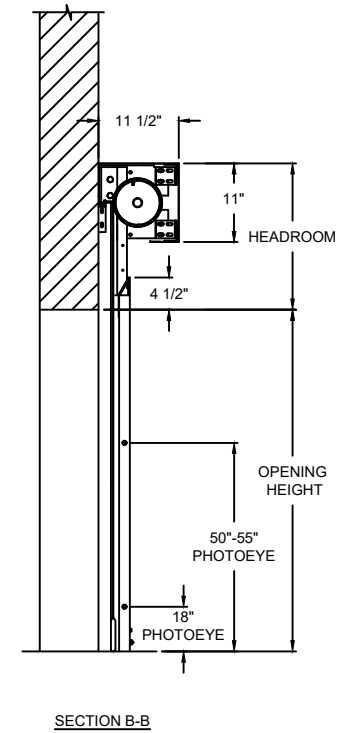
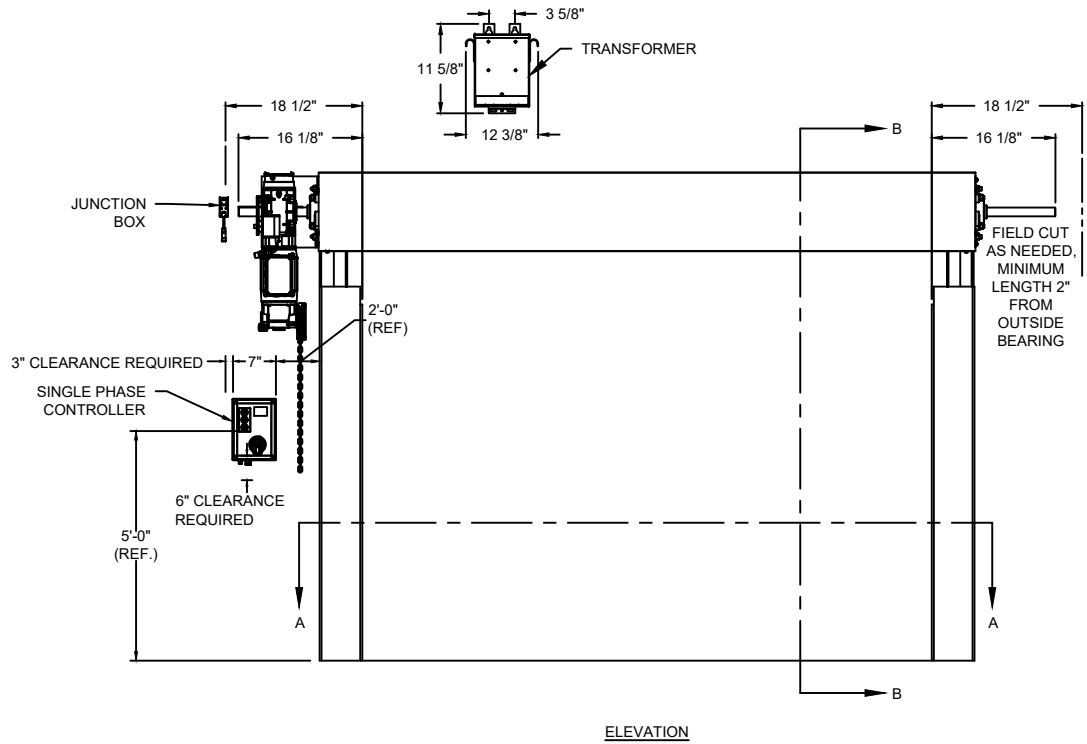
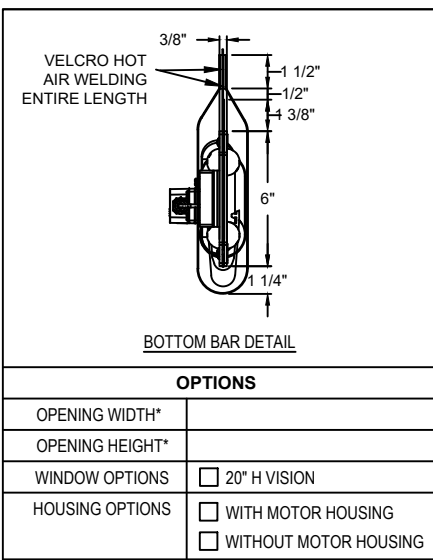


COMPONENT	MATERIAL	OPERATION	NOTES:
HOOD	22 GA. STEEL	MOTOR RH	1. WINDLOAD 3 P.S.F ULTIMATE @ 12" WIDE * PLEASE REFER TO WALL GUIDE FOR COMPLETE LIST OF BUILDING SPECIFICATIONS
CURTAIN	2 THIN LAYER PVC COATED POLYESTER WITH 1 LAYER POLYESTER WEAVE		
GUIDES	HIGH STRENGTH STEEL		
BOTTOM BAR	FLEXIBLE W/ DETACHABLE BOTTOM SEAL		

# ADV-XTREME

880 FLEXIBLE BOTTOM INTERIOR HIGH SPEED FABRIC DOOR

DWG. NO.	DATE:	
SHEET	BY:	

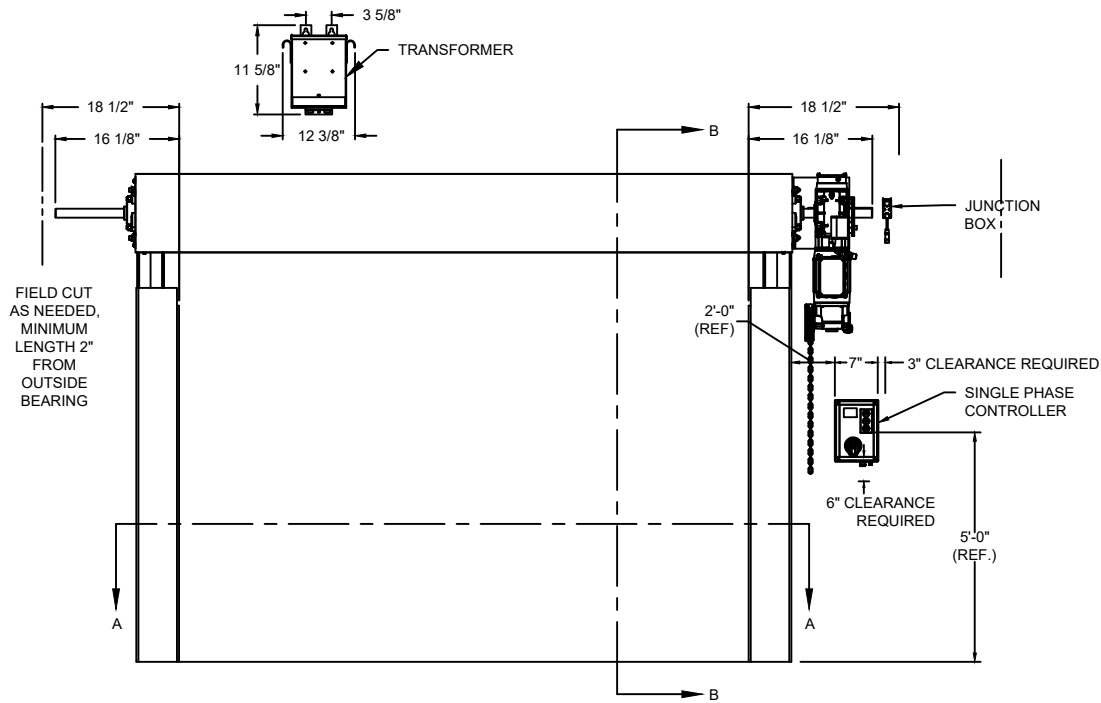
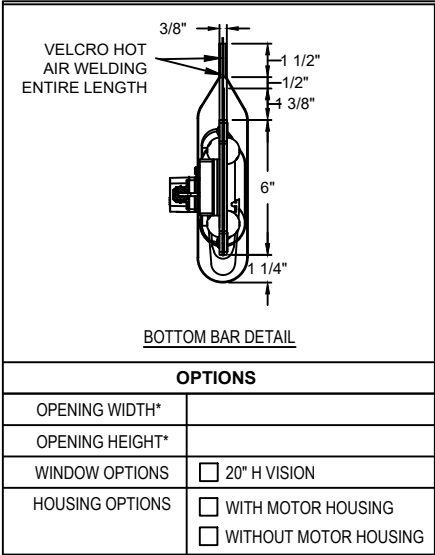


COMPONENT	MATERIAL	OPERATION	NOTES:
HOOD	22 GA. STEEL	MOTOR LH 208V 1-PHASE VIA TRANSFORMER (190-270V RANGE)	1. WINDLOAD 3 P.S.F ULTIMATE @ 12' WIDE * PLEASE REFER TO WALL GUIDE FOR COMPLETE LIST OF BUILDING SPECIFICATIONS
CURTAIN	2 THIN LAYER PVC COATED POLYESTER WITH 1 LAYER POLYESTER WEAVE		
GUIDES	HIGH STRENGTH STEEL		
BOTTOM BAR	FLEXIBLE W/ DETACHABLE BOTTOM SEAL		

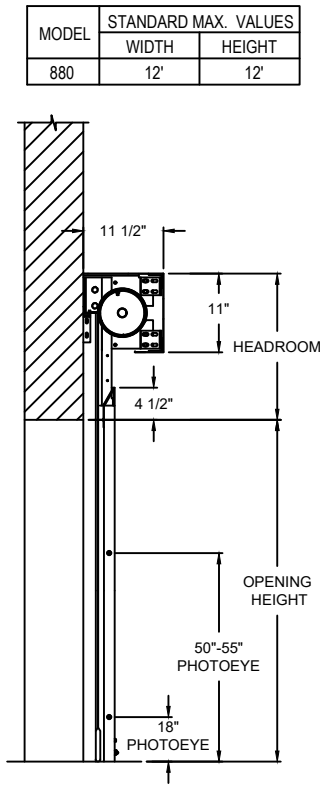
# ADV-XTREME

880 FLEXIBLE BOTTOM INTERIOR  
HIGH SPEED FABRIC DOOR

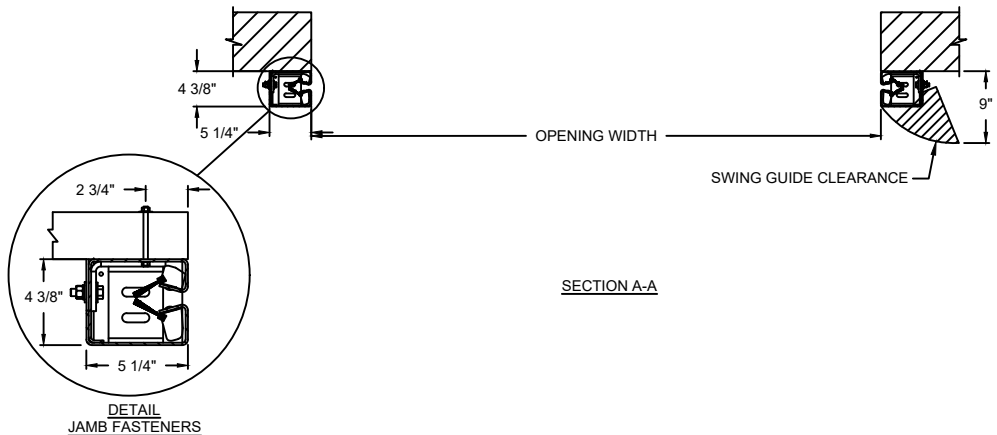
DWG. NO.	DATE:	
SHEET	BY:	



**ELEVATION**



**SECTION B-B**

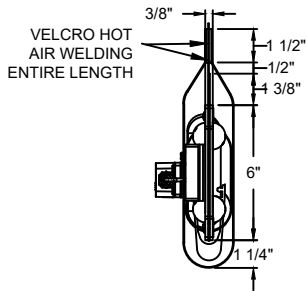


COMPONENT	MATERIAL	OPERATION	NOTES:
HOOD	22 GA. STEEL	MOTOR RH 208V 1-PHASE VIA TRANSFORMER (190-270V RANGE)	1. WINDLOAD 3 P.S.F ULTIMATE @ 12' WIDE * PLEASE REFER TO WALL GUIDE FOR COMPLETE LIST OF BUILDING SPECIFICATIONS
CURTAIN	2 THIN LAYER PVC COATED POLYESTER WITH 1 LAYER POLYESTER WEAVE		
GUIDES	HIGH STRENGTH STEEL		
BOTTOM BAR	FLEXIBLE W/ DETACHABLE BOTTOM SEAL		

**ADV-XTREME**

880 FLEXIBLE BOTTOM INTERIOR  
HIGH SPEED FABRIC DOOR

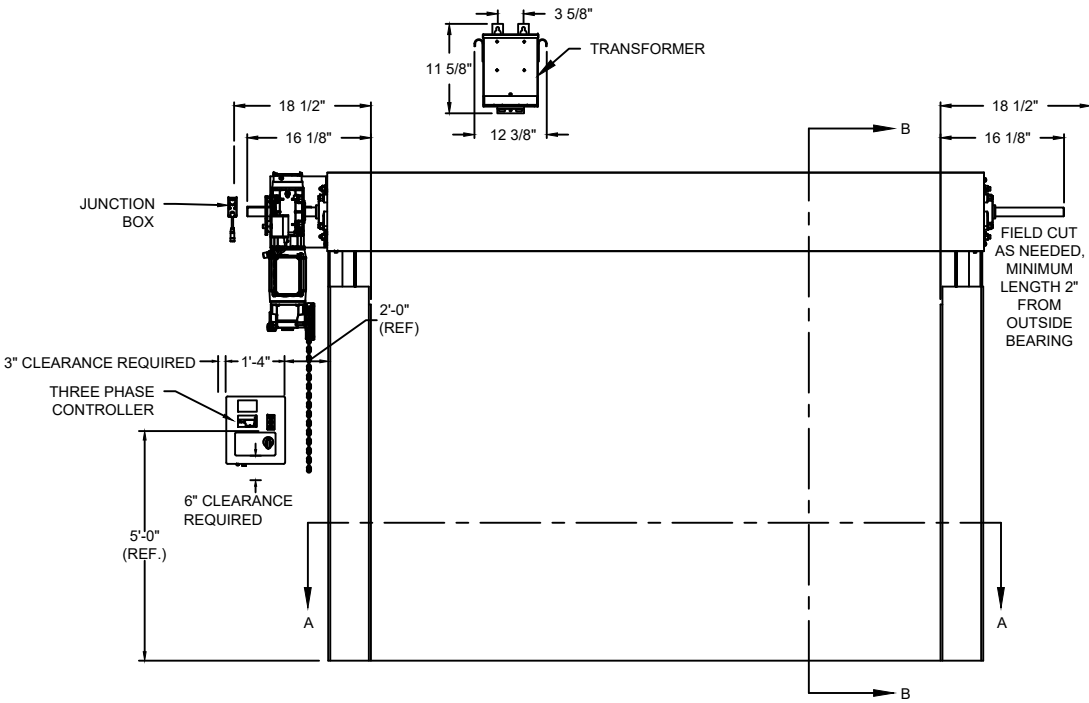
DWG. NO.	DATE:	<b>Wayne Dalton.</b>
SHEET	BY:	



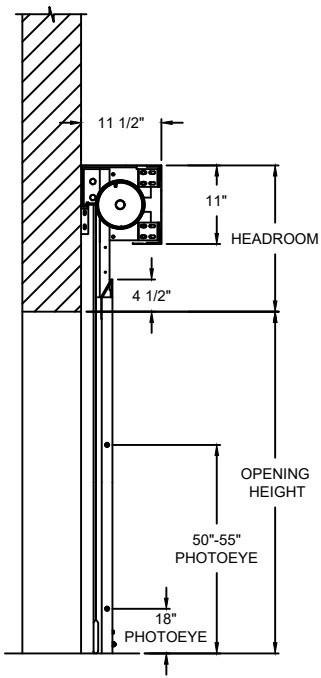
**BOTTOM BAR DETAIL**

**OPTIONS**

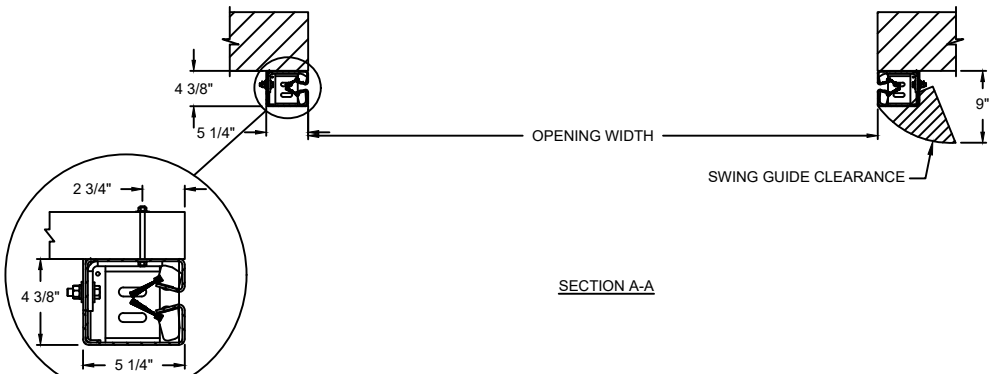
OPENING WIDTH*	
OPENING HEIGHT*	
WINDOW OPTIONS	<input type="checkbox"/> 20" H VISION
HOUSING OPTIONS	<input type="checkbox"/> WITH MOTOR HOUSING <input type="checkbox"/> WITHOUT MOTOR HOUSING



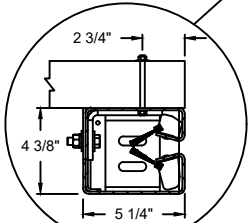
**ELEVATION**



**SECTION B-B**



**SECTION A-A**



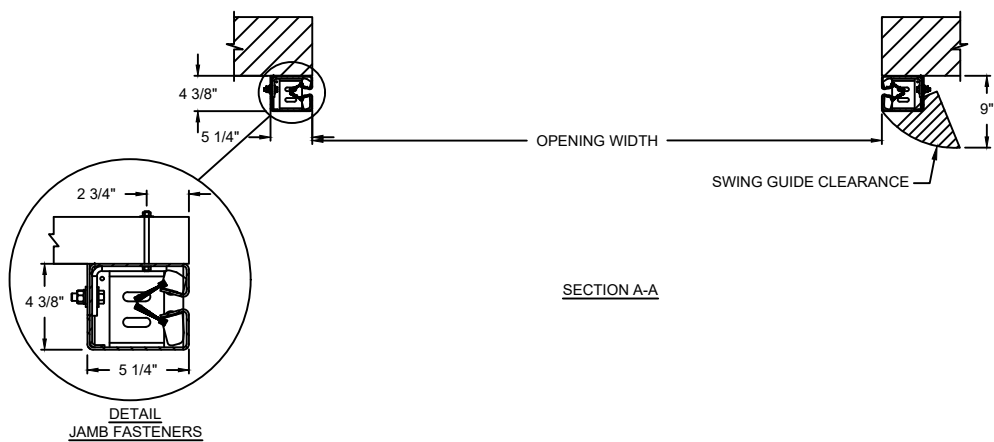
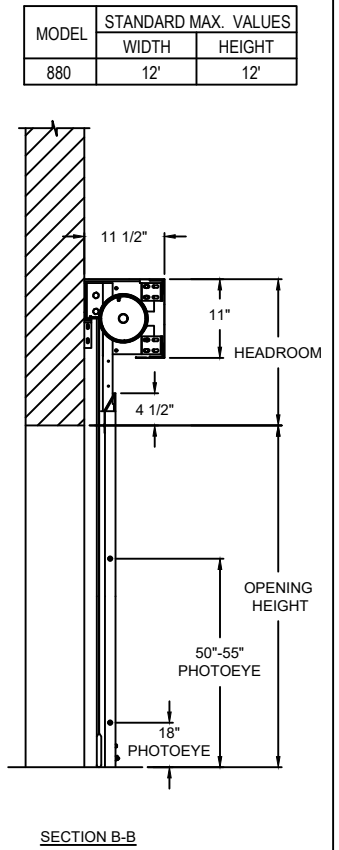
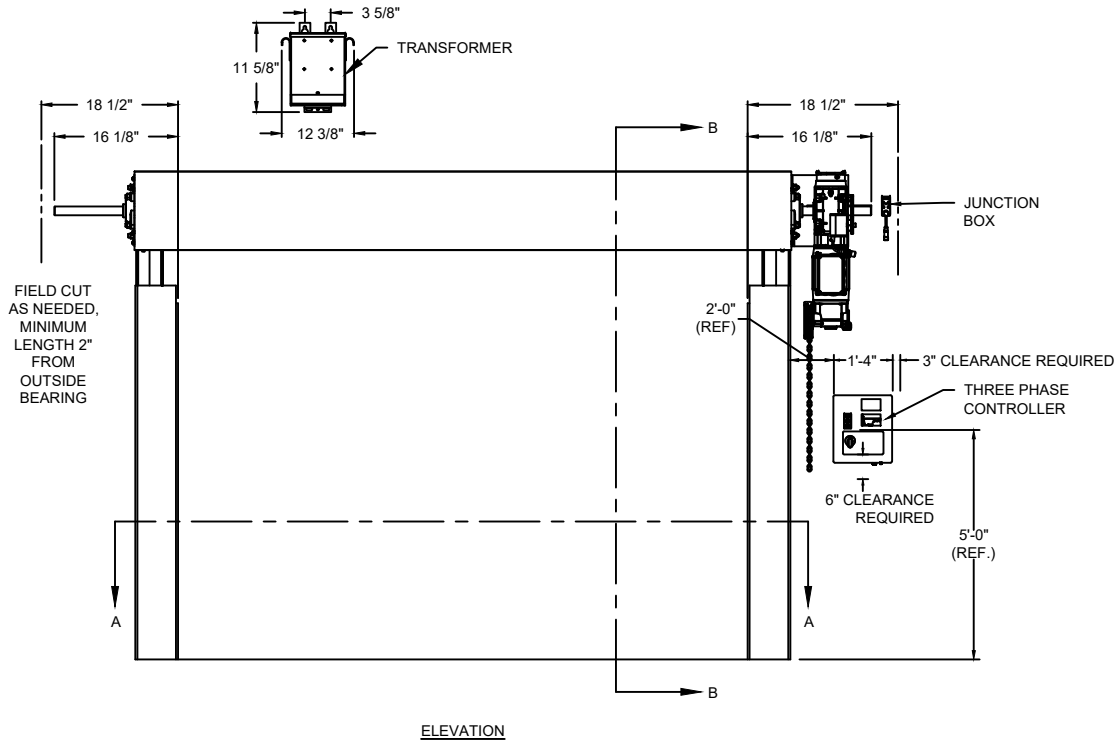
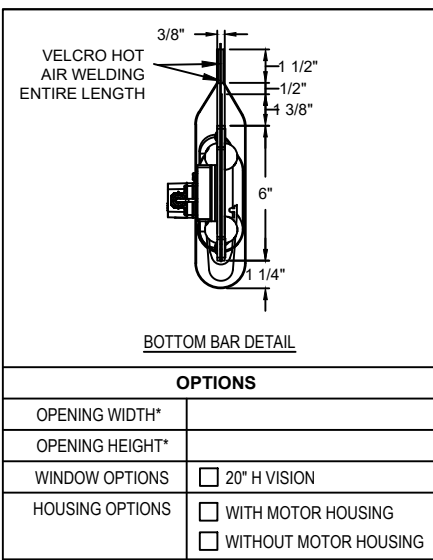
**DETAIL  
JAMB FASTENERS**

COMPONENT	MATERIAL	OPERATION	NOTES:
HOOD	22 GA. STEEL	MOTOR LH 208V 3-PHASE VIA TRANSFORMER (190-270V RANGE)	1. WINDLOAD 3 P.S.F ULTIMATE @ 12" WIDE * PLEASE REFER TO WALL GUIDE FOR COMPLETE LIST OF BUILDING SPECIFICATIONS
CURTAIN	2 THIN LAYER PVC COATED POLYESTER WITH 1 LAYER POLYESTER WEAVE		
GUIDES	HIGH STRENGTH STEEL		
BOTTOM BAR	FLEXIBLE W/ DETACHABLE BOTTOM SEAL		

# ADV-XTREME

880 FLEXIBLE BOTTOM INTERIOR  
HIGH SPEED FABRIC DOOR

DWG. NO.	DATE:	<b>Wayne Dalton.</b>
SHEET	BY:	



COMPONENT	MATERIAL	OPERATION	NOTES:
HOOD	22 GA. STEEL	MOTOR RH 208V 3-PHASE VIA TRANSFORMER (190-270V RANGE)	1. WINDLOAD 3 P.S.F ULTIMATE @ 12" WIDE * PLEASE REFER TO WALL GUIDE FOR COMPLETE LIST OF BUILDING SPECIFICATIONS
CURTAIN	2 THIN LAYER PVC COATED POLYESTER WITH 1 LAYER POLYESTER WEAVE		
GUIDES	HIGH STRENGTH STEEL		
BOTTOM BAR	FLEXIBLE W/ DETACHABLE BOTTOM SEAL		

# ADV-XTREME

880 FLEXIBLE BOTTOM INTERIOR  
HIGH SPEED FABRIC DOOR

DWG. NO.	DATE:	
SHEET	BY:	

VELCRO HOT  
AIR WELDING  
ENTIRE LENGTH

3/8"

1 1/2"

1/2"

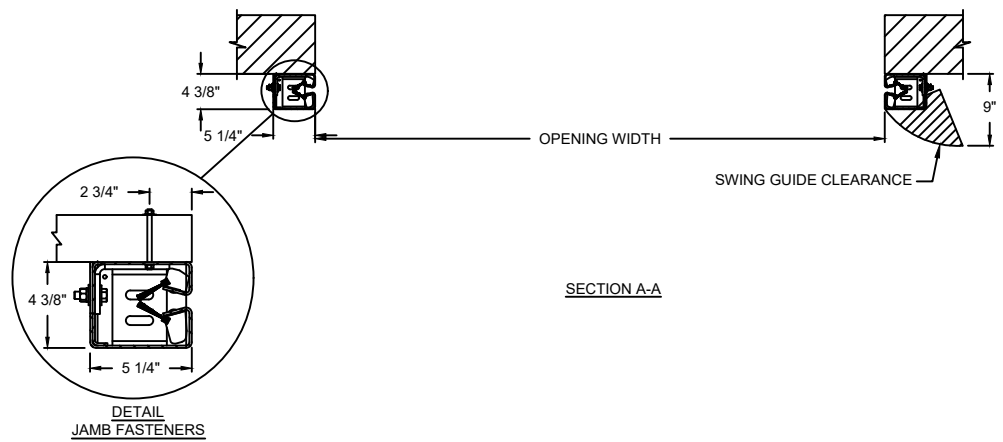
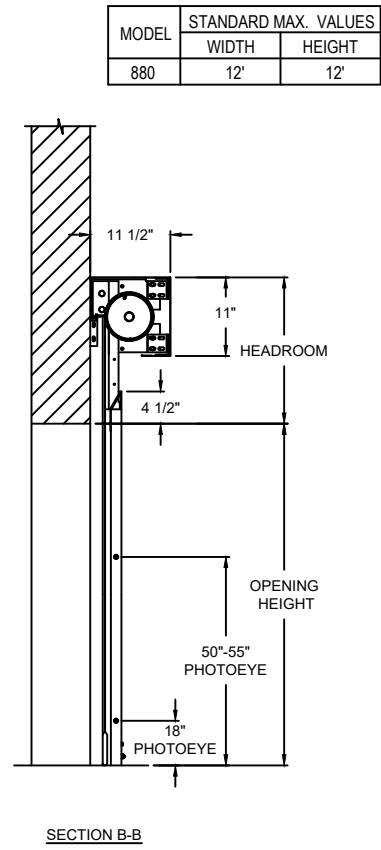
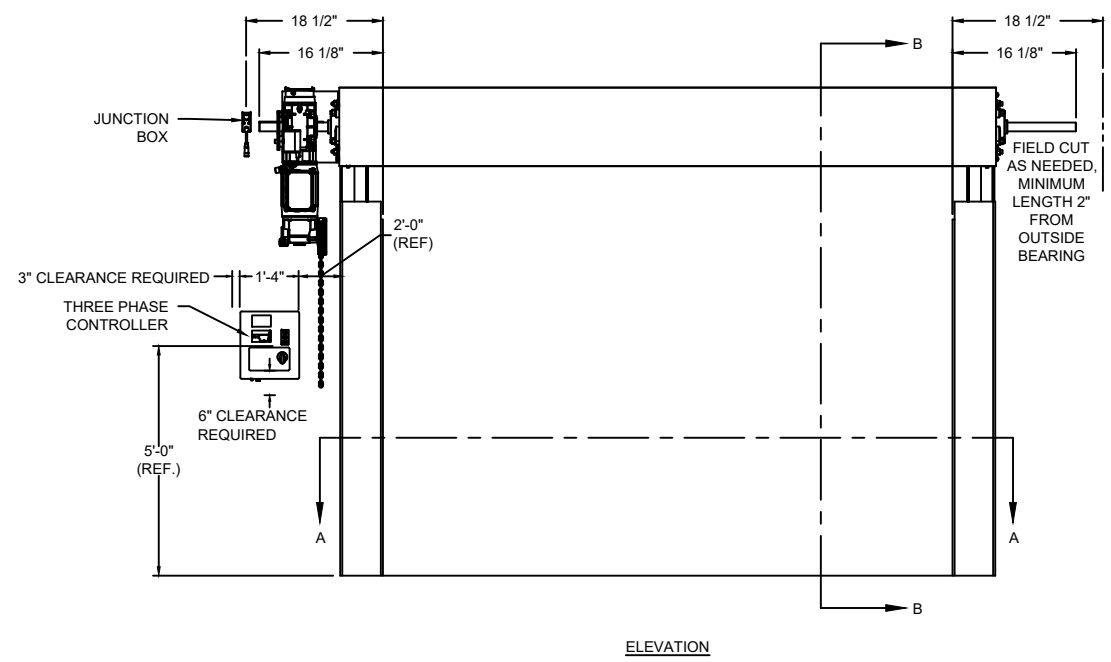
3/8"

6"

1 1/4"

BOTTOM BAR DETAIL

OPTIONS	
OPENING WIDTH*	
OPENING HEIGHT*	
WINDOW OPTIONS	<input type="checkbox"/> 20" H VISION
VOLTS OPTIONS	<input type="checkbox"/> 230V 3-PHASE <input type="checkbox"/> 460V 3-PHASE
HOUSING OPTIONS	<input type="checkbox"/> WITH MOTOR HOUSING <input type="checkbox"/> WITHOUT MOTOR HOUSING



COMPONENT	MATERIAL	OPERATION	NOTES:
HOOD	22 GA. STEEL	MOTOR LH	1. WINDLOAD 3 P.S.F ULTIMATE @ 12' WIDE * PLEASE REFER TO WALL GUIDE FOR COMPLETE LIST OF BUILDING SPECIFICATIONS
CURTAIN	2 THIN LAYER PVC COATED POLYESTER WITH 1 LAYER POLYESTER WEAVE		
GUIDES	HIGH STRENGTH STEEL		
BOTTOM BAR	FLEXIBLE W/ DETACHABLE BOTTOM SEAL		

# ADV-XTREME

880 FLEXIBLE BOTTOM INTERIOR  
HIGH SPEED FABRIC DOOR

DWG. NO.	DATE:	
SHEET	BY:	

3/8"

VELCRO HOT  
AIR WELDING  
ENTIRE LENGTH

1 1/2"

1/2"

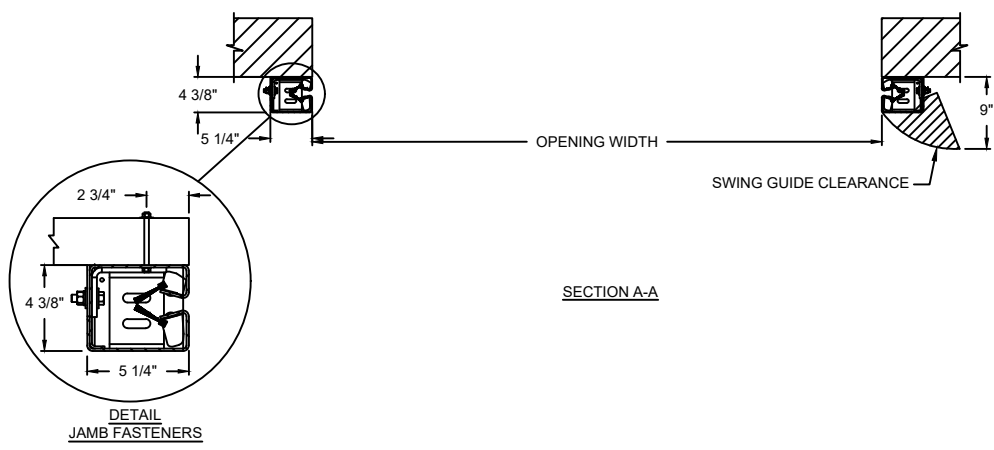
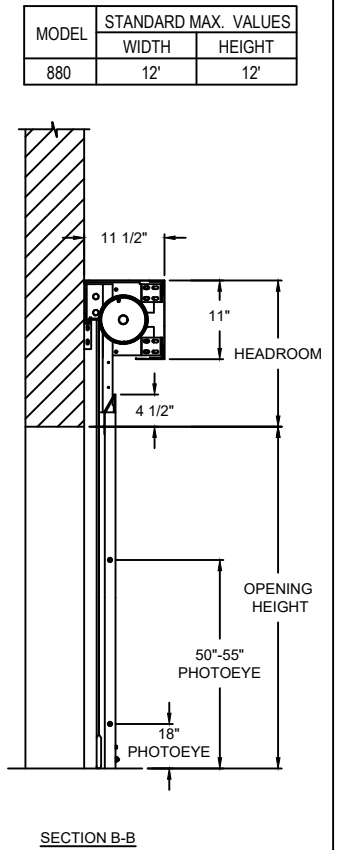
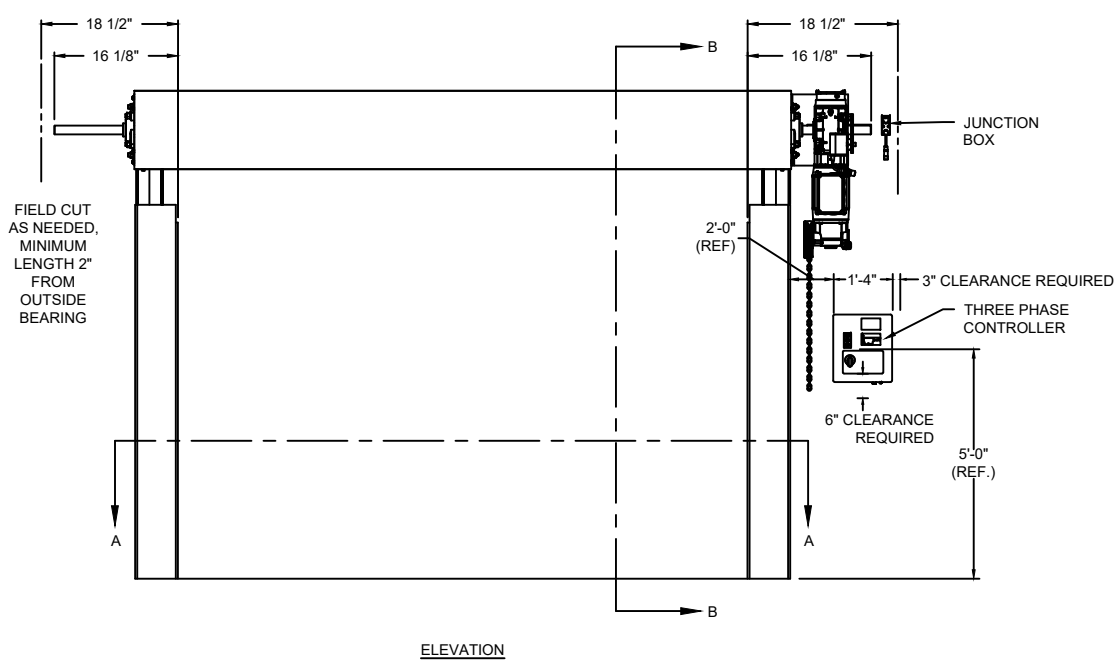
4 3/8"

6"

1 1/4"

**BOTTOM BAR DETAIL**

OPENING WIDTH*	
OPENING HEIGHT*	
WINDOW OPTIONS	<input type="checkbox"/> 20" H VISION
VOLTS OPTIONS	<input type="checkbox"/> 230V 3-PHASE <input type="checkbox"/> 460V 3-PHASE
HOUSING OPTIONS	<input type="checkbox"/> WITH MOTOR HOUSING <input type="checkbox"/> WITHOUT MOTOR HOUSING



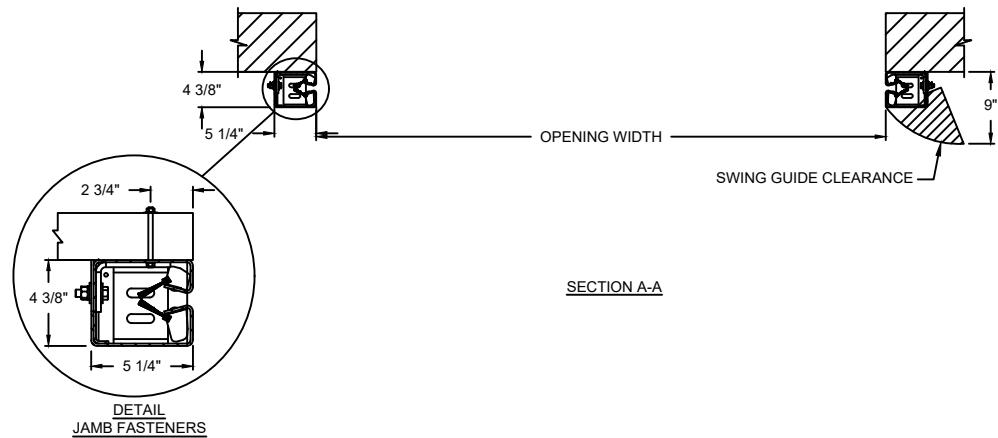
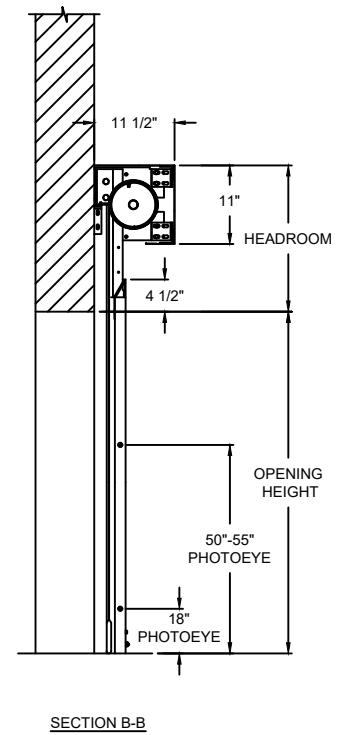
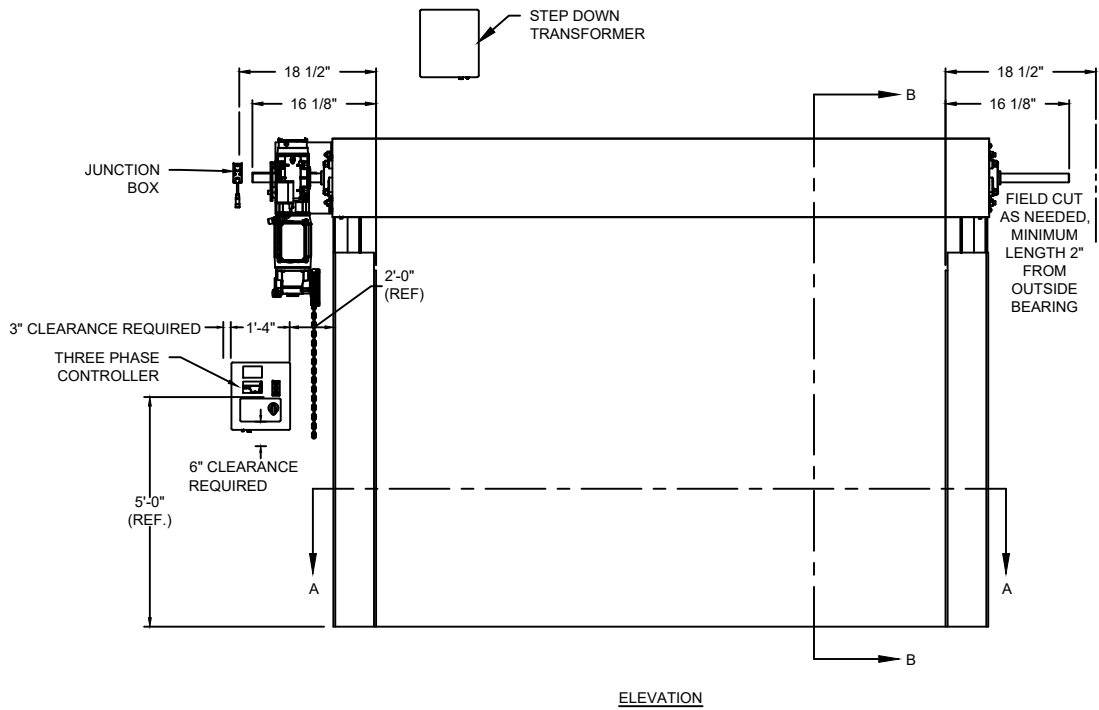
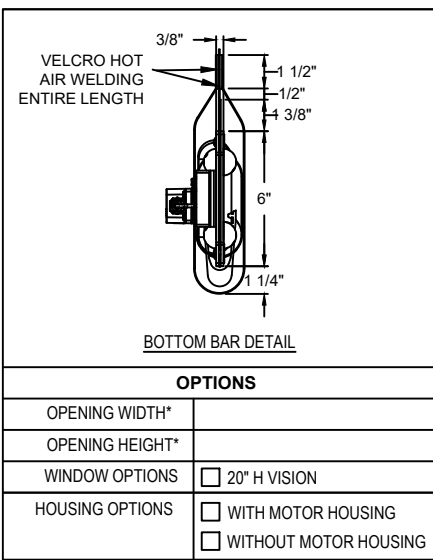
COMPONENT	MATERIAL	OPERATION	NOTES:
HOOD	22 GA. STEEL	MOTOR RH	1. WINDLOAD 3 P.S.F ULTIMATE @ 12' WIDE * PLEASE REFER TO WALL GUIDE FOR COMPLETE LIST OF BUILDING SPECIFICATIONS
CURTAIN	2 THIN LAYER PVC COATED POLYESTER WITH 1 LAYER POLYESTER WEAVE		
GUIDES	HIGH STRENGTH STEEL		
BOTTOM BAR	FLEXIBLE W/ DETACHABLE BOTTOM SEAL		

# ADV-XTREME

880 FLEXIBLE BOTTOM INTERIOR  
HIGH SPEED FABRIC DOOR

DWG. NO.	DATE:	
SHEET	BY:	



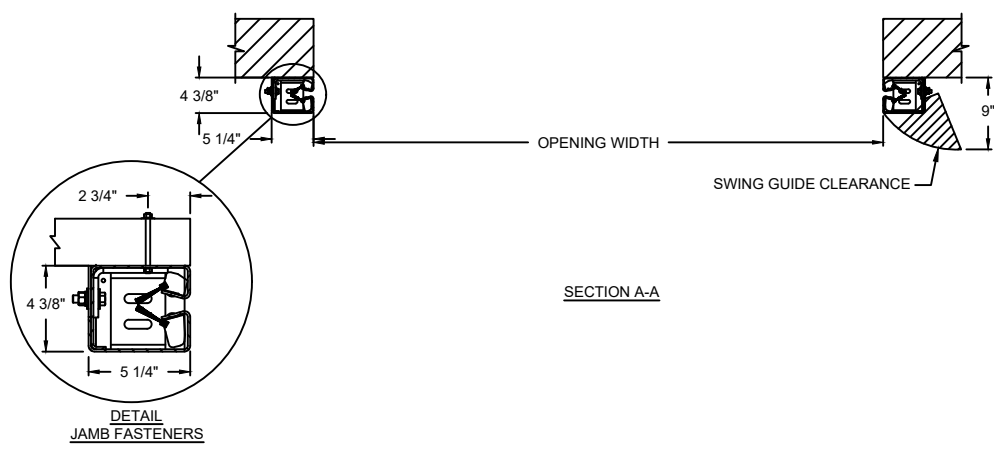
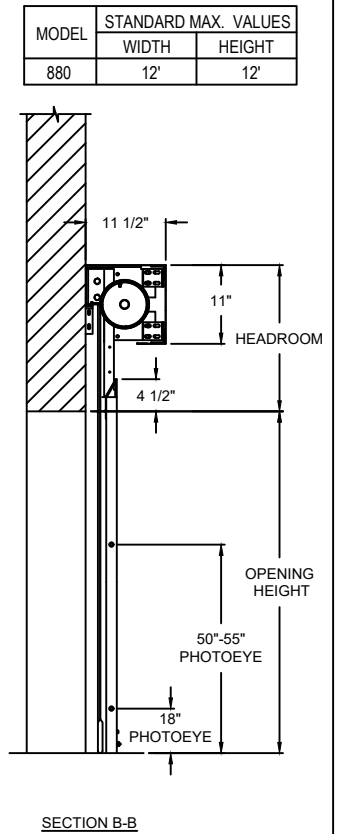
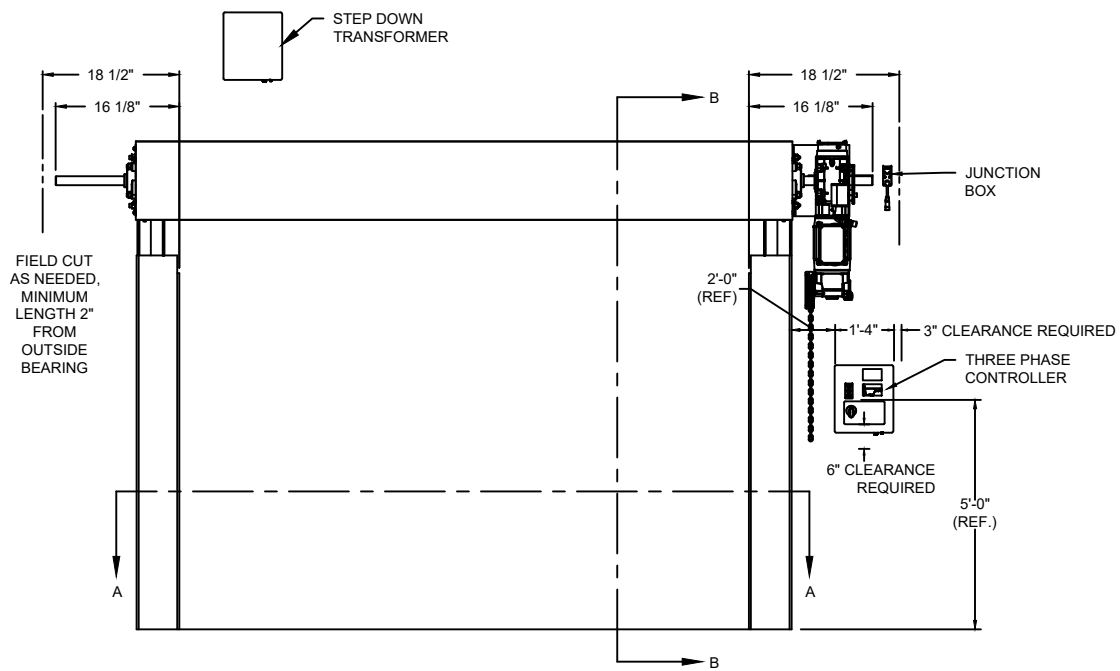
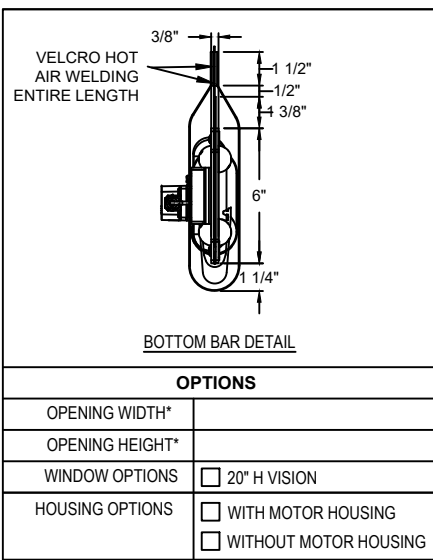


COMPONENT	MATERIAL	OPERATION	NOTES:
HOOD	22 GA. STEEL	MOTOR LH 575V 3-PHASE	1. WINDLOAD 3 P.S.F ULTIMATE @ 12" WIDE * PLEASE REFER TO WALL GUIDE FOR COMPLETE LIST OF BUILDING SPECIFICATIONS
CURTAIN	2 THIN LAYER PVC COATED POLYESTER WITH 1 LAYER POLYESTER WEAVE		
GUIDES	HIGH STRENGTH STEEL		
BOTTOM BAR	FLEXIBLE W/ DETACHABLE BOTTOM SEAL		

# ADV-XTREME

880 FLEXIBLE BOTTOM INTERIOR  
HIGH SPEED FABRIC DOOR

DWG. NO.	DATE:	
SHEET	BY:	



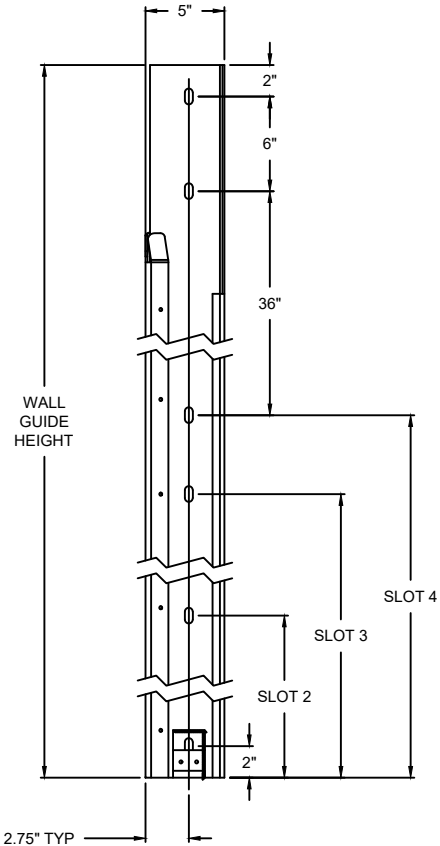
COMPONENT	MATERIAL	OPERATION	NOTES:
HOOD	22 GA. STEEL	MOTOR RH 575V 3-PHASE	1. WINDLOAD 3 P.S.F ULTIMATE @ 12' WIDE * PLEASE REFER TO WALL GUIDE FOR COMPLETE LIST OF BUILDING SPECIFICATIONS
CURTAIN	2 THIN LAYER PVC COATED POLYESTER WITH 1 LAYER POLYESTER WEAVE		
GUIDES	HIGH STRENGTH STEEL		
BOTTOM BAR	FLEXIBLE W/ DETACHABLE BOTTOM SEAL		

# ADV-XTREME

880 FLEXIBLE BOTTOM INTERIOR  
HIGH SPEED FABRIC DOOR

DWG. NO.	DATE:	
SHEET	BY:	

880 WALL GUIDE NO SPLICE										
BUILD HEIGHT (FT)	BUILD HEIGHT (IN)	WALL GUIDE HEIGHT (IN)	NUMBER OF SLOTS	SLOT 1	SLOT 2	SLOT 3	SLOT 4	SLOT 5	SLOT 6	SLOT 7
5	60	79	4	2.0	36.5	71.0	77.0			
5.5	66	85	5	2.0	21.5	41.0	77.0	83.0		
6	72	91	5	2.0	24.5	47.0	83.0	89.0		
6.5	78	97	5	2.0	27.5	53.0	89.0	95.0		
7	84	103	5	2.0	30.5	59.0	95.0	101.0		
7.5	90	109	5	2.0	33.5	65.0	101.0	107.0		
8	96	115	5	2.0	36.5	71.0	107.0	113.0		
8.5	102	121	6	2.0	21.5	41.0	77.0	113.0	119.0	
9	108	127	6	2.0	24.5	47.0	83.0	119.0	125.0	
9.5	114	133	6	2.0	27.5	53.0	89.0	125.0	131.0	
10	120	139	6	2.0	30.5	59.0	95.0	131.0	137.0	
10.5	126	145	6	2.0	33.5	65.0	101.0	137.0	143.0	
11	132	151	6	2.0	36.5	71.0	107.0	143.0	149.0	
11.5	138	157	7	2.0	21.5	41.0	77.0	113.0	149.0	155.0
12	144	163	7	2.0	24.5	47.0	83.0	119.0	155.0	161.0



NO SPLICE JAMB DETAIL  
SHOWING 6 SLOTS

# ADV-XTREME

880 FLEXIBLE BOTTOM INTERIOR  
HIGH SPEED FABRIC DOOR