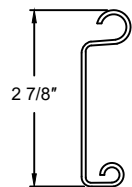


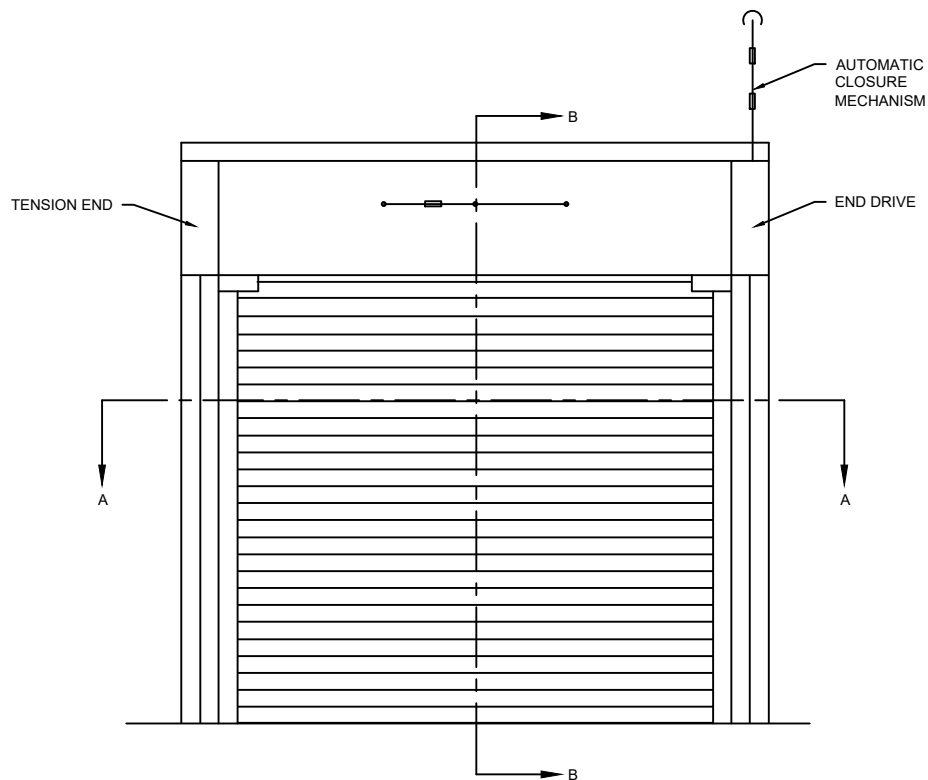
#14 SLAT SECTION



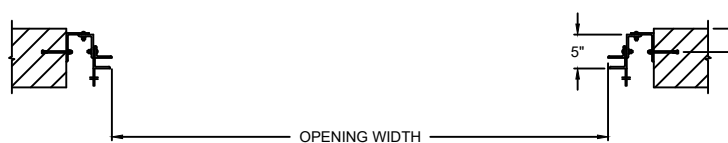
BCO-3165 SECTION

OPTIONS

OPENING WIDTH	
OPENING HEIGHT	
OPERATION OPTION	<input type="checkbox"/> PUSH-UP <input type="checkbox"/> CHAIN HOIST <input type="checkbox"/> CRANK <input type="checkbox"/> ELECTRIC MOTOR

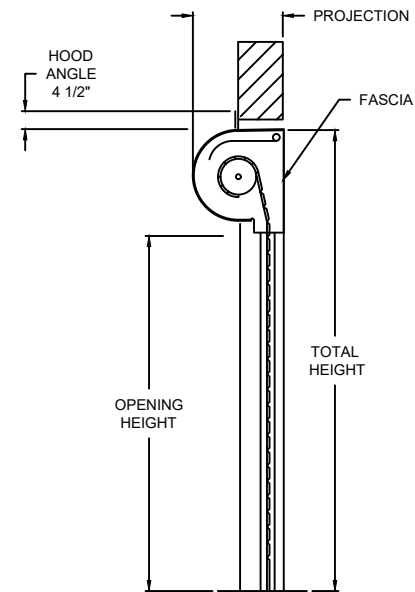


ELEVATION



SECTION A-A

MODEL	STANDARD MAX. VALUES	
	WIDTH	HEIGHT
700C	22'	22'



SECTION B-B

PROJECTION	
MIN.	MAX.
14" X 16"	26" X 28"

FIRESTAR®

700C FIRE RATED ROLLING SERVICE DOOR - BETWEEN JAMBS

COMPONENT	MATERIAL	OPERATION	NOTES:
CURTAIN	PAINTED GALVANIZED / STAINLESS STEEL	MANUAL PUSH UP	- WARRANTY: 2-YEAR LIMITED; 3-YEAR/20,000 CYCLES LIMITED ON OVERHEAD DOOR™ DOOR AND OPERATOR SYSTEM (WHEN PURCHASED TOGETHER)
GUIDES	STEEL ANGLES		
BOTTOM BAR	STEEL DOUBLE ANGLE		

DWG. NO.	DATE:	Wayne Dalton
SHEET	BY:	