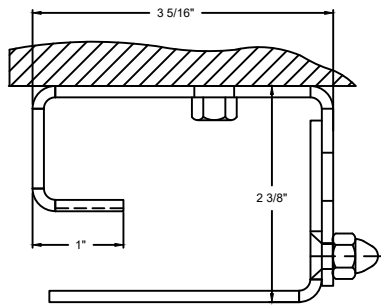
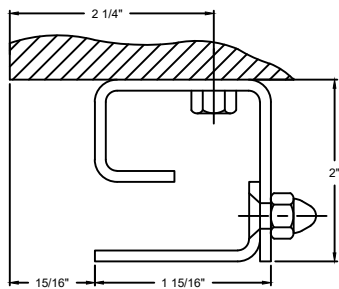


#17 SLAT SECTION



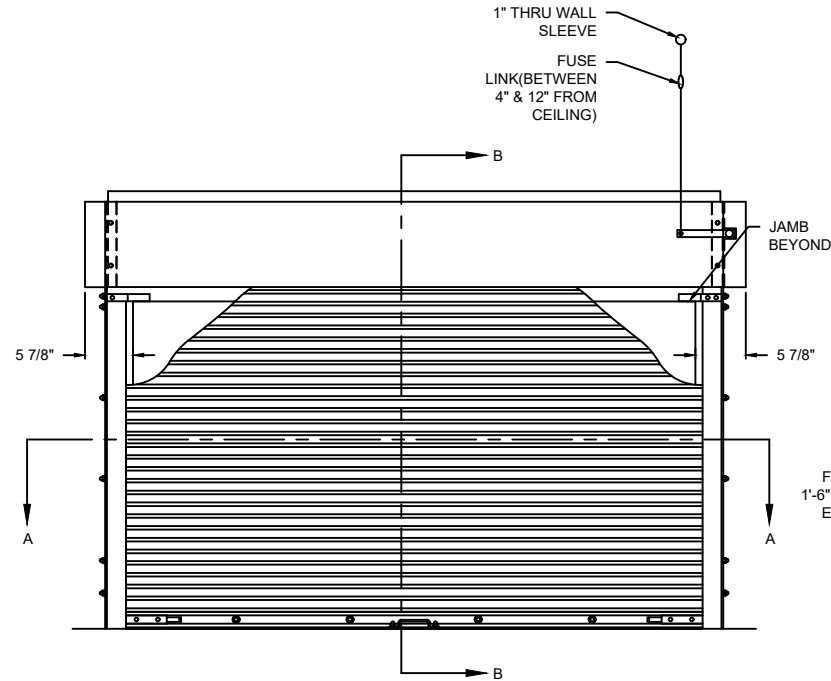
LARGE GUIDE DETAIL



SMALL GUIDE DETAIL

OPTIONS

OPENING WIDTH	
OPENING HEIGHT	
HEADPLATE OPTIONS	<input type="checkbox"/> SMALL <input type="checkbox"/> LARGE
GUIDE OPTIONS	<input type="checkbox"/> SMALL <input type="checkbox"/> LARGE
FIRE DOOR EQUIPMENT OPTIONS	<input type="checkbox"/> FIRE SENTINEL (LH) <input type="checkbox"/> FIRE SENTINEL (RH) <input type="checkbox"/> HOOD FLAME BAFFLE <input type="checkbox"/> HORN & STROBE <input type="checkbox"/> KEYED TEST SWITCH (LH) <input type="checkbox"/> KEYED TEST SWITCH (RH) <input type="checkbox"/> SMOKE DETECTOR

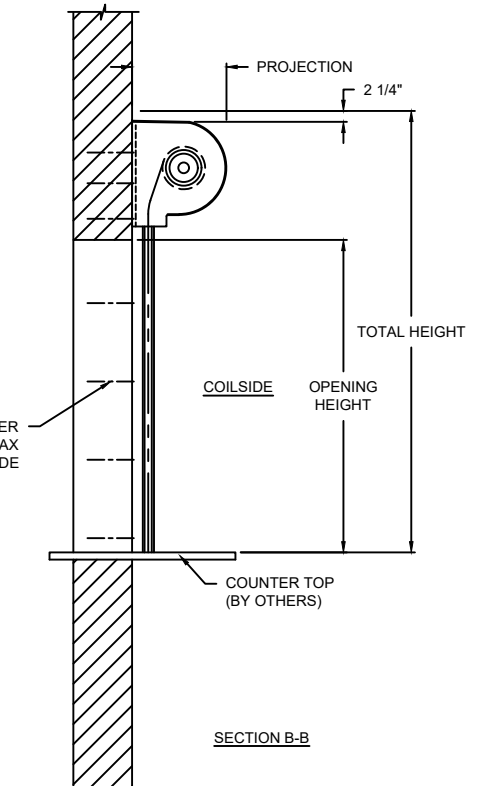


ELEVATION



COILSIDE

SECTION A-A



PROJECTION	
MIN.	MAX.
9.5" X 9.5"	11.5" X 11.5"

MODEL	STANDARD MAX. VALUES	
	WIDTH	HEIGHT
550	16'	8'

FIRE RATED COUNTER SHUTTERS

550 FIRE RATED ROLLING COUNTER SHUTTERS - FACE MOUNT

DWG. NO.	DATE:	Wayne Dalton
SHEET	BY:	

COMPONENT	MATERIAL	OPERATION	NOTES:
HOOD	24 GA. G40 STAINLESS STEEL	MANUAL PUSH UP LH	- AVAILABLE WITH UL AND FM 3-HOUR (OPTIONAL) CLASS A LABELS FOR MASONRY FIRE WALLS
CURTAIN	22 GA. G40 STAINLESS STEEL		- AVAILABLE WITH A UL 1 1/2-HOUR CLASS B LABEL FOR APPLICATIONS IN NON-MASONRY FIRE WALLS OF DRY WALL WITH WOOD, STEEL STUDS, OR STEEL TUBE JAMBS
GUIDES	11 GA. GREY PRIMED STEEL		
BOTTOM BAR	G40 STAINLESS STEEL		

MODEL	STANDARD MAX. VALUES	
	WIDTH	HEIGHT
550	16'	8'

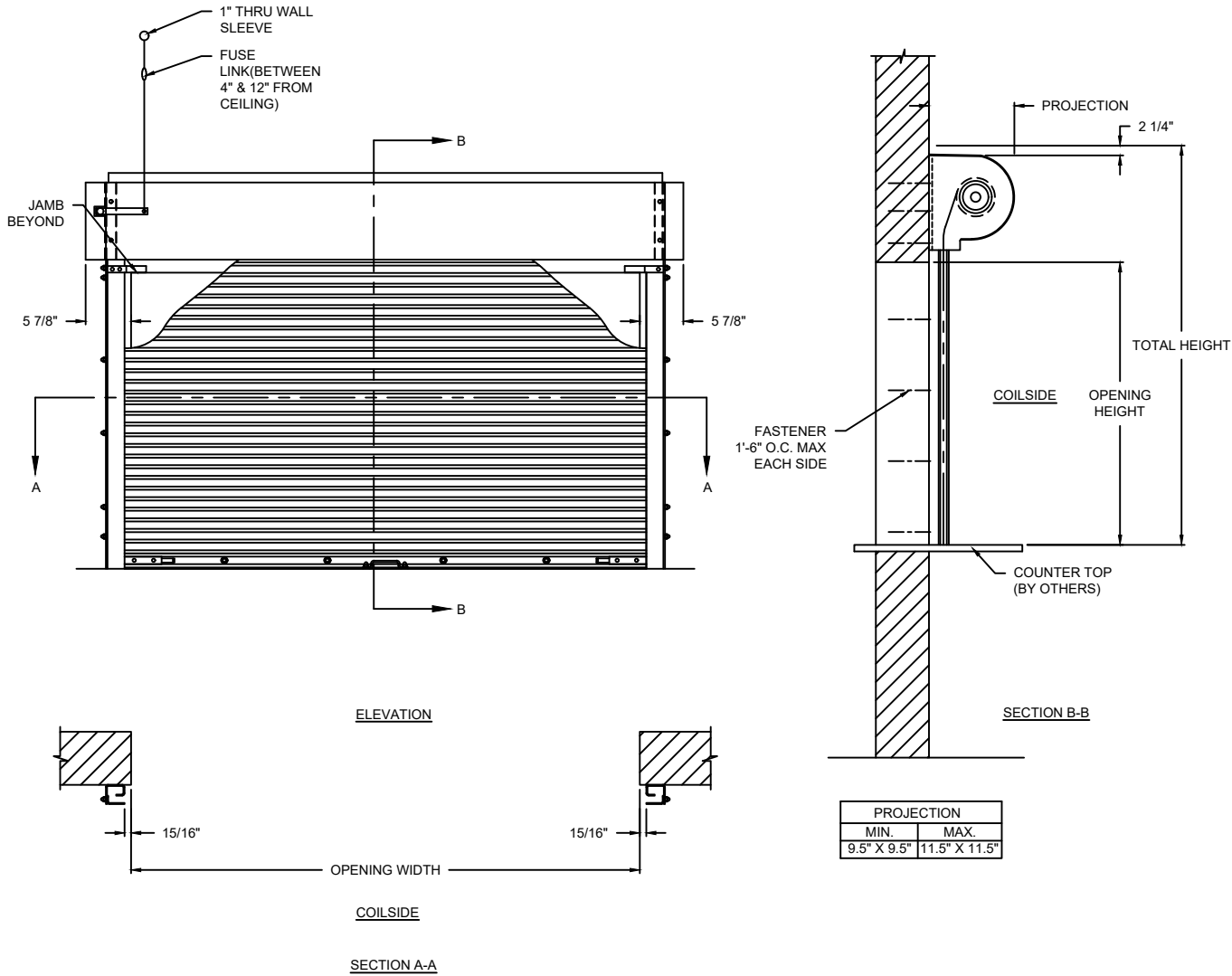
#17 SLAT SECTION

LARGE GUIDE DETAIL

SMALL GUIDE DETAIL

OPTIONS

OPENING WIDTH	
OPENING HEIGHT	
HEADPLATE OPTIONS	<input type="checkbox"/> SMALL <input type="checkbox"/> LARGE
GUIDE OPTIONS	<input type="checkbox"/> SMALL <input type="checkbox"/> LARGE
FIRE DOOR EQUIPMENT OPTIONS	<input type="checkbox"/> FIRE SENTINEL (LH) <input type="checkbox"/> FIRE SENTINEL (RH) <input type="checkbox"/> HOOD FLAME BAFFLE <input type="checkbox"/> HORN & STROBE <input type="checkbox"/> KEYED TEST SWITCH (LH) <input type="checkbox"/> KEYED TEST SWITCH (RH) <input type="checkbox"/> SMOKE DETECTOR

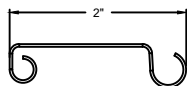


FIRE RATED COUNTER SHUTTERS

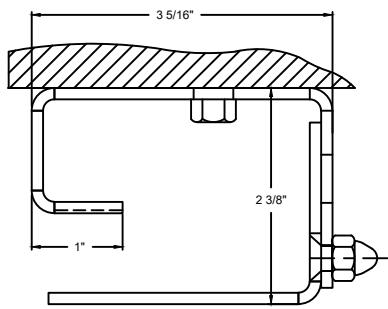
550 FIRE RATED ROLLING COUNTER SHUTTERS - FACE MOUNT

COMPONENT	MATERIAL	OPERATION	NOTES:
HOOD	24 GA. G40 STAINLESS STEEL	MANUAL PUSH UP RH	- AVAILABLE WITH UL AND FM 3-HOUR (OPTIONAL) CLASS A LABELS FOR MASONRY FIRE WALLS
CURTAIN	22 GA. G40 STAINLESS STEEL		- AVAILABLE WITH A UL 1½-HOUR CLASS B LABEL FOR APPLICATIONS IN NON-MASONRY FIRE WALLS OF DRY WALL WITH WOOD, STEEL STUDS, OR STEEL TUBE JAMBS
GUIDES	11 GA. GREY PRIMED STEEL		
BOTTOM BAR	G40 STAINLESS STEEL		

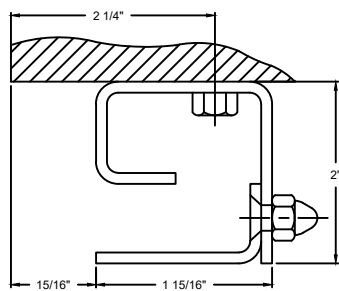
DWG. NO.	DATE:	
SHEET	BY:	



#17 SLAT SECTION



LARGE GUIDE DETAIL



SMALL GUIDE DETAIL

OPTIONS

OPENING WIDTH

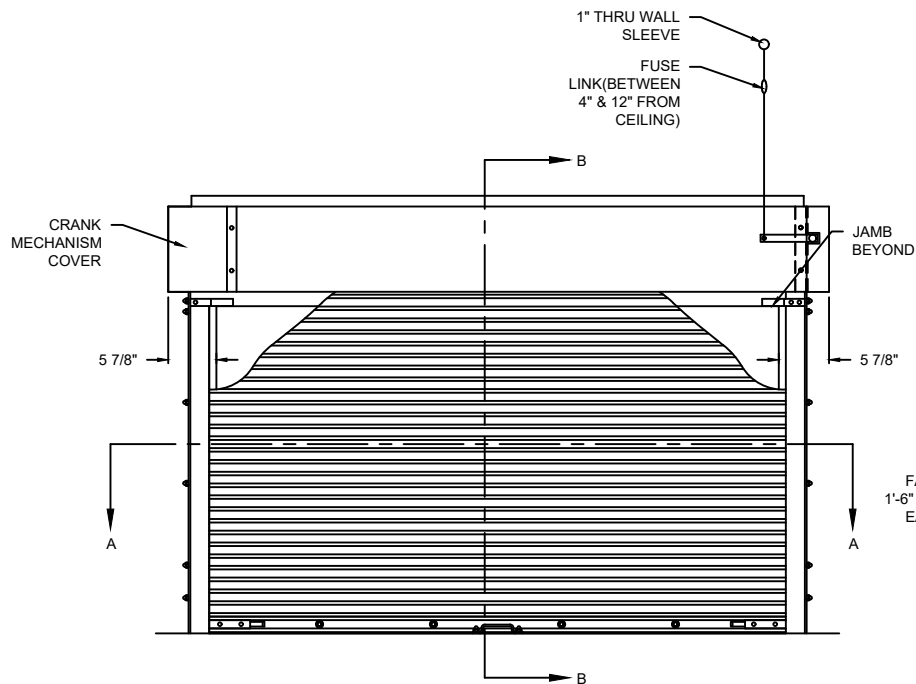
OPENING HEIGHT

HEADPLATE OPTIONS ☐ SMALL ☐ LARGE

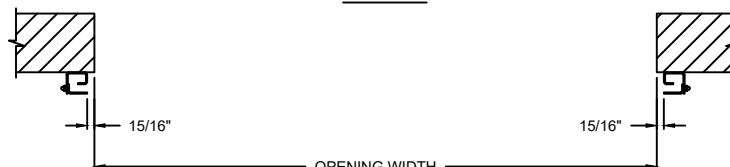
GUIDE OPTIONS ☐ SMALL ☐ LARGE

FIRE DOOR EQUIPMENT
OPTIONS

- ☐ FIRE SENTINEL (LH)
- ☐ FIRE SENTINEL (RH)
- ☐ HOOD FLAME BAFFLE
- ☐ HORN & STROBE
- ☐ KEYED TEST SWITCH (LH)
- ☐ KEYED TEST SWITCH (RH)
- ☐ SMOKE DETECTOR



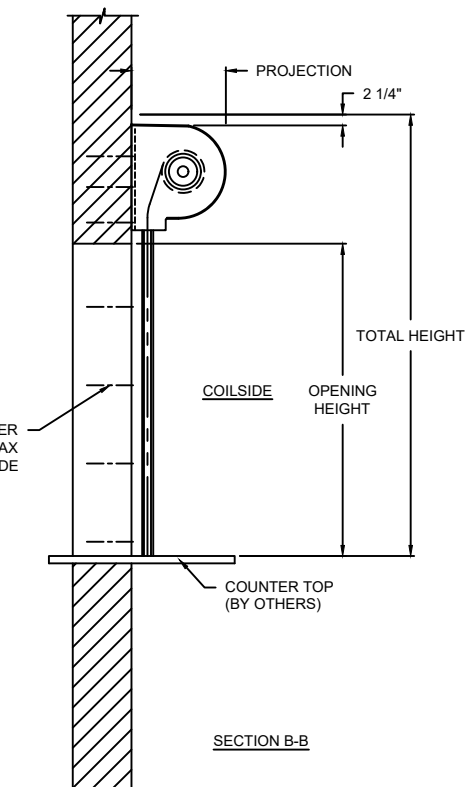
ELEVATION



COILSIDE

SECTION A-A

MODEL	STANDARD MAX. VALUES	
	WIDTH	HEIGHT
550	16'	8'



SECTION B-B

PROJECTION	
MIN.	MAX.
9.5" X 9.5"	11.5" X 11.5"

FIRE RATED COUNTER SHUTTERS

550 FIRE RATED ROLLING COUNTER SHUTTERS - FACE MOUNT

DWG. NO.	DATE:	Wayne Dalton
SHEET	BY:	

COMPONENT

MATERIAL

OPERATION

NOTES:

HOOD

24 GA. G40 STAINLESS STEEL

CURTAIN

22 GA. G40 STAINLESS STEEL

GUIDES

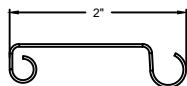
11 GA. GREY PRIMED STEEL

BOTTOM BAR

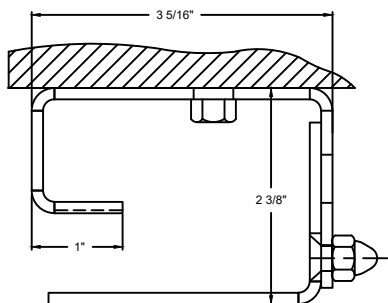
G40 STAINLESS STEEL

CRANK LH

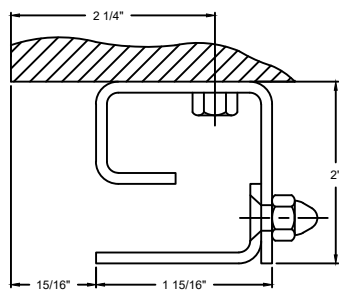
- AVAILABLE WITH UL AND FM 3-HOUR (OPTIONAL) CLASS A LABELS FOR MASONRY FIRE WALLS
- AVAILABLE WITH A UL 1 1/2-HOUR CLASS B LABEL FOR APPLICATIONS IN NON-MASONRY FIRE WALLS OF DRY WALL WITH WOOD, STEEL STUDS, OR STEEL TUBE JAMBS



#17 SLAT SECTION



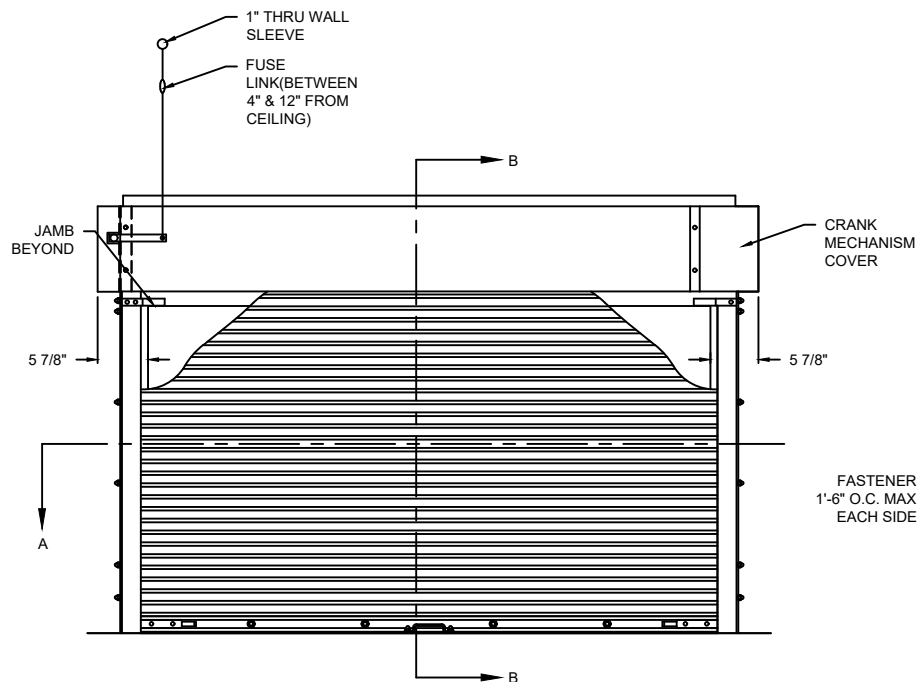
LARGE GUIDE DETAIL



SMALL GUIDE DETAIL

OPTIONS

OPENING WIDTH	
OPENING HEIGHT	
HEADPLATE OPTIONS	<input type="checkbox"/> SMALL <input type="checkbox"/> LARGE
GUIDE OPTIONS	<input type="checkbox"/> SMALL <input type="checkbox"/> LARGE
FIRE DOOR EQUIPMENT OPTIONS	<input type="checkbox"/> FIRE SENTINEL (LH)
	<input type="checkbox"/> FIRE SENTINEL (RH)
	<input type="checkbox"/> HOOD FLAME BAFFLE
	<input type="checkbox"/> HORN & STROBE
	<input type="checkbox"/> KEYED TEST SWITCH (LH)
	<input type="checkbox"/> KEYED TEST SWITCH (RH)
	<input type="checkbox"/> SMOKE DETECTOR



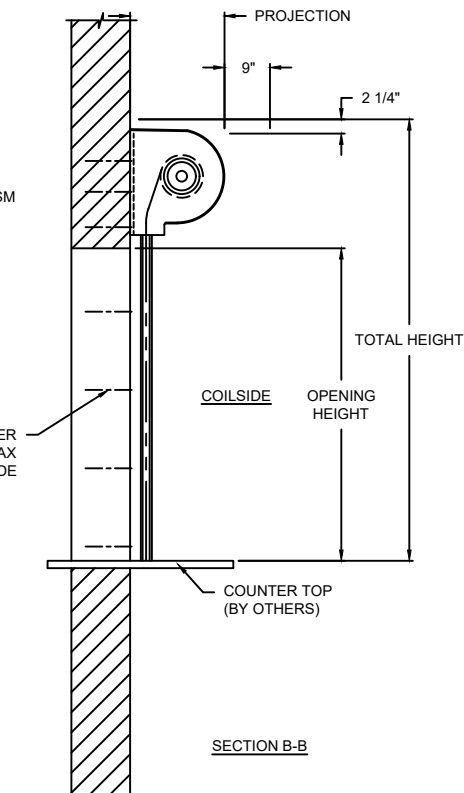
ELEVATION



COILSIDE

SECTION A-A

MODEL	STANDARD MAX. VALUES	
	WIDTH	HEIGHT
550	16'	8'



SECTION B-B

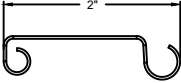
PROJECTION	
MIN.	MAX.
9.5" X 9.5"	11.5" X 11.5"

FIRE RATED COUNTER SHUTTERS

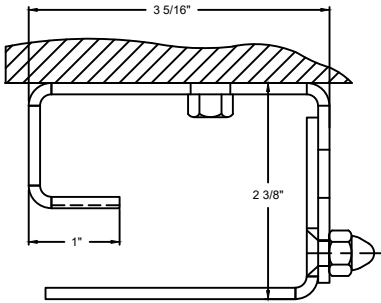
550 FIRE RATED ROLLING COUNTER SHUTTERS - FACE MOUNT

DWG. NO.	DATE:	Wayne Dalton.
SHEET	BY:	

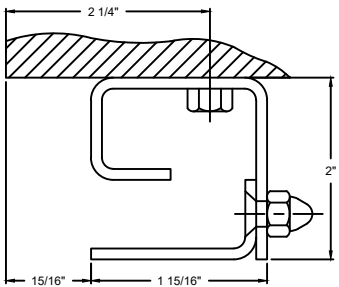
COMPONENT	MATERIAL	OPERATION	NOTES:
HOOD	24 GA. G40 STAINLESS STEEL	CRANK RH	- AVAILABLE WITH UL AND FM 3-HOUR (OPTIONAL) CLASS A LABELS FOR MASONRY FIRE WALLS - AVAILABLE WITH A UL 1 1/2-HOUR CLASS B LABEL FOR APPLICATIONS IN NON-MASONRY FIRE WALLS OF DRY WALL WITH WOOD, STEEL STUDS, OR STEEL TUBE JAMBS
CURTAIN	22 GA. G40 STAINLESS STEEL		
GUIDES	11 GA. GREY PRIMED STEEL		
BOTTOM BAR	G40 STAINLESS STEEL		



#17 SLAT SECTION

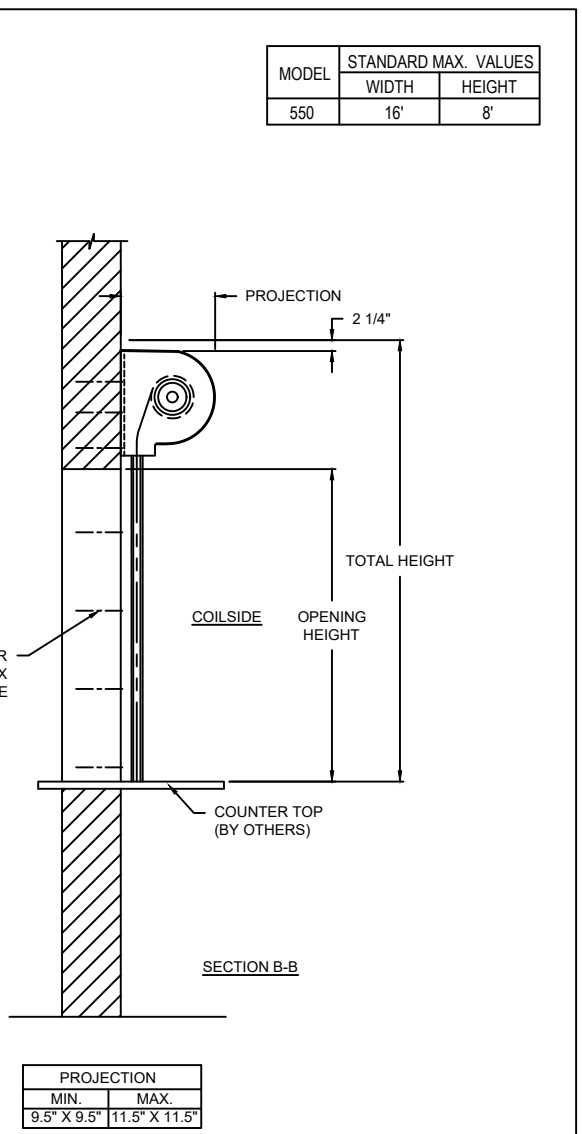
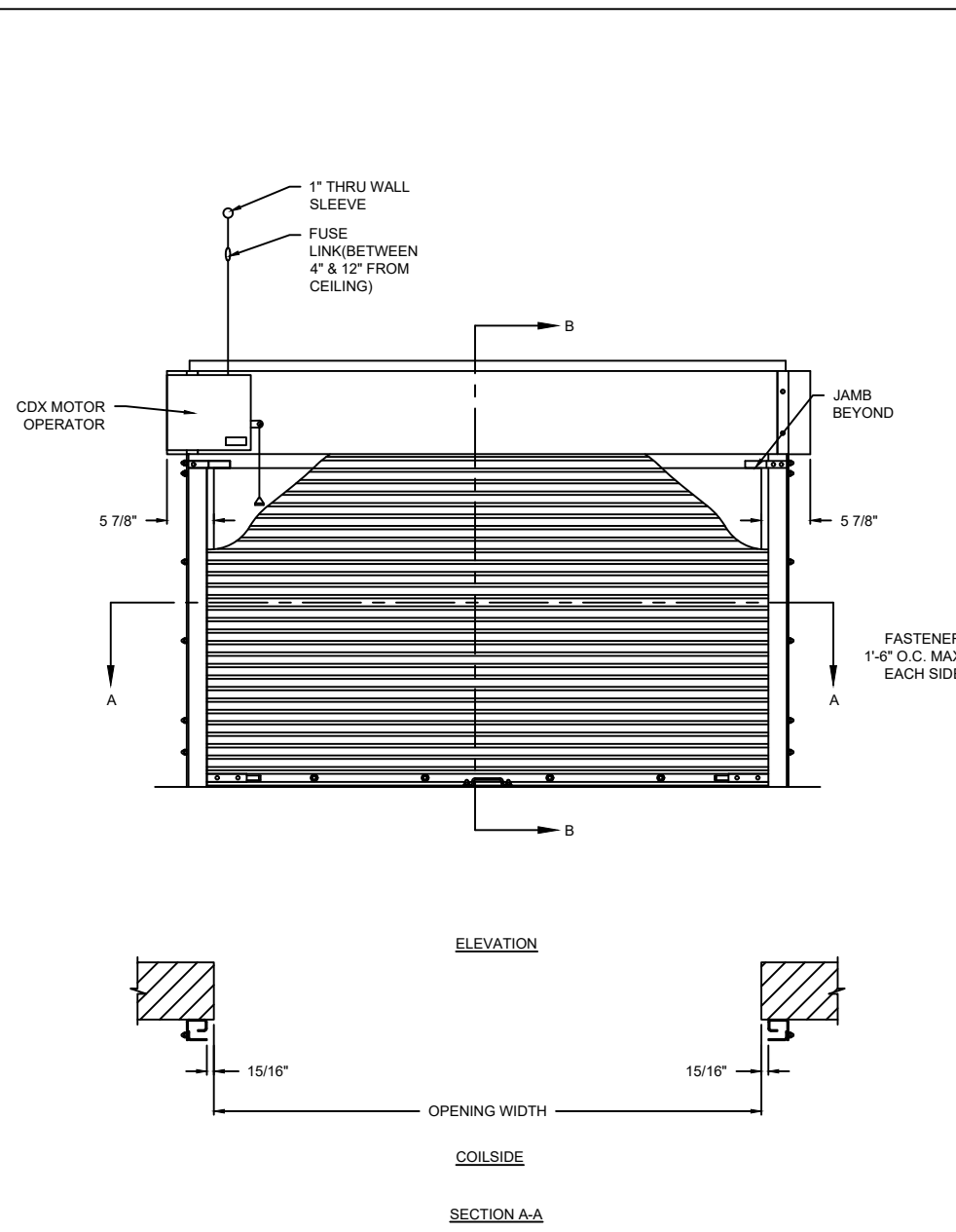


LARGE GUIDE DETAIL



SMALL GUIDE DETAIL

OPTIONS	
OPENING WIDTH	
OPENING HEIGHT	
HEADPLATE OPTIONS	<input type="checkbox"/> SMALL <input type="checkbox"/> LARGE
GUIDE OPTIONS	<input type="checkbox"/> SMALL <input type="checkbox"/> LARGE
FIRE DOOR EQUIPMENT OPTIONS	<input type="checkbox"/> FIRE SENTINEL (LH) <input type="checkbox"/> FIRE SENTINEL (RH) <input type="checkbox"/> HOOD FLAME BAFFLE <input type="checkbox"/> HORN & STROBE <input type="checkbox"/> KEYED TEST SWITCH (LH) <input type="checkbox"/> KEYED TEST SWITCH (RH) <input type="checkbox"/> SMOKE DETECTOR



FIRE RATED COUNTER SHUTTERS

550 FIRE RATED ROLLING COUNTER SHUTTERS - FACE MOUNT


COMPONENT	MATERIAL	OPERATION	NOTES:
HOOD	24 GA. G40 STAINLESS STEEL	CDX OPERATOR LH	- AVAILABLE WITH UL AND FM 3-HOUR (OPTIONAL) CLASS A LABELS FOR MASONRY FIRE WALLS - AVAILABLE WITH A UL 1 1/2-HOUR CLASS B LABEL FOR APPLICATIONS IN NON-MASONRY FIRE WALLS OF DRY WALL WITH WOOD, STEEL STUDS, OR STEEL TUBE JAMBS
CURTAIN	22 GA. G40 STAINLESS STEEL		
GUIDES	11 GA. GREY PRIMED STEEL		
BOTTOM BAR	G40 STAINLESS STEEL		

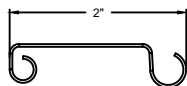
DWG. NO.

DATE:

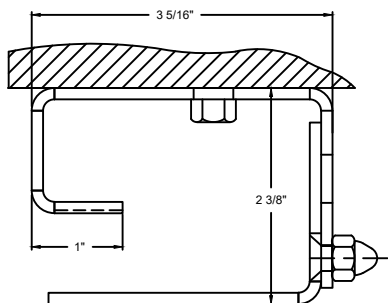
SHEET

BY:

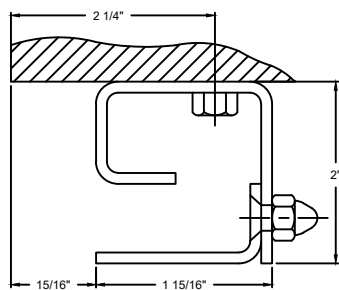




#17 SLAT SECTION



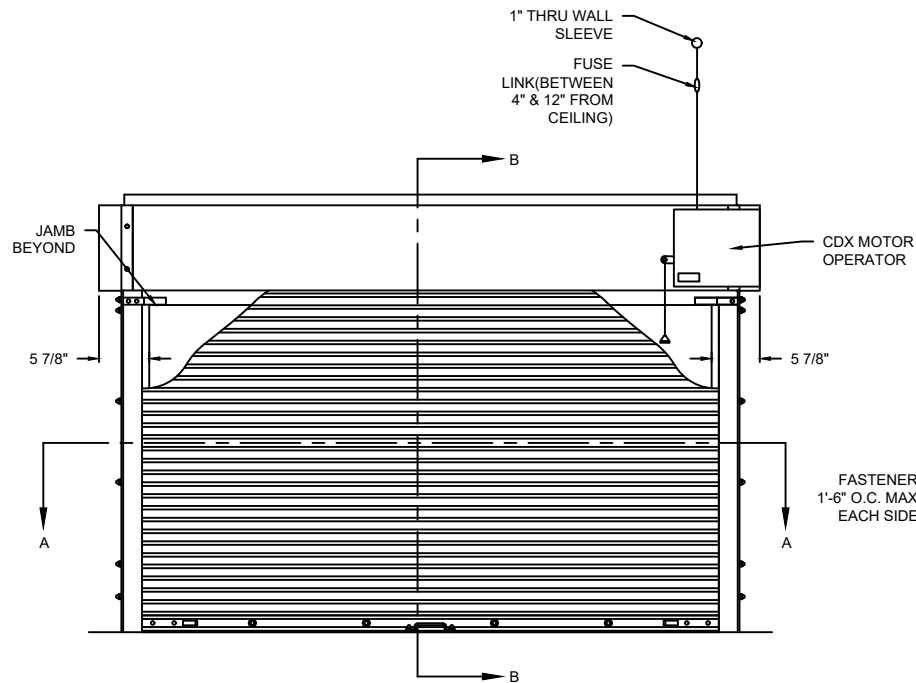
LARGE GUIDE DETAIL



SMALL GUIDE DETAIL

OPTIONS

OPENING WIDTH	
OPENING HEIGHT	
HEADPLATE OPTIONS	<input type="checkbox"/> SMALL <input type="checkbox"/> LARGE
GUIDE OPTIONS	<input type="checkbox"/> SMALL <input type="checkbox"/> LARGE
FIRE DOOR EQUIPMENT OPTIONS	<input type="checkbox"/> FIRE SENTINEL (LH) <input type="checkbox"/> FIRE SENTINEL (RH) <input type="checkbox"/> HOOD FLAME BAFFLE <input type="checkbox"/> HORN & STROBE <input type="checkbox"/> KEYED TEST SWITCH (LH) <input type="checkbox"/> KEYED TEST SWITCH (RH) <input type="checkbox"/> SMOKE DETECTOR



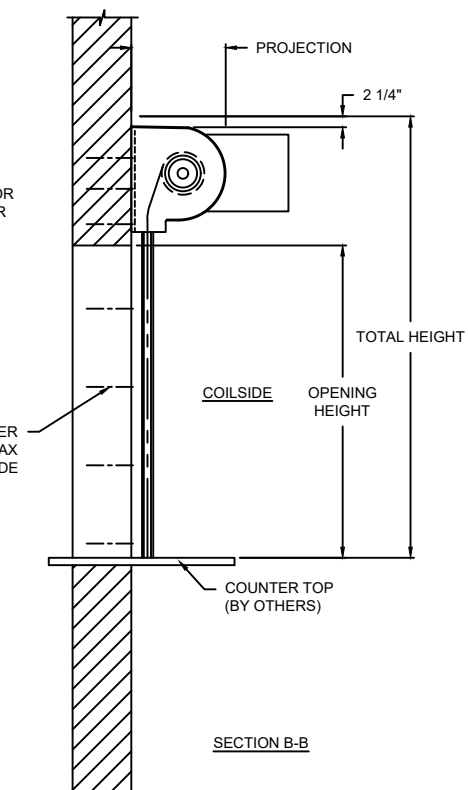
ELEVATION



COILSIDE

SECTION A-A

MODEL	STANDARD MAX. VALUES	
	WIDTH	HEIGHT
550	16'	8'



PROJECTION	
MIN.	MAX.
9.5" X 9.5"	11.5" X 11.5"

FIRE RATED COUNTER SHUTTERS

550 FIRE RATED ROLLING COUNTER SHUTTERS - FACE MOUNT

DWG. NO.	DATE:	Wayne Dalton
SHEET	BY:	

COMPONENT	MATERIAL	OPERATION	NOTES:
HOOD	24 GA. G40 STAINLESS STEEL	CDX OPERATOR RH	- AVAILABLE WITH UL AND FM 3-HOUR (OPTIONAL) CLASS A LABELS FOR MASONRY FIRE WALLS - AVAILABLE WITH A UL 1 1/2-HOUR CLASS B LABEL FOR APPLICATIONS IN NON-MASONRY FIRE WALLS OF DRY WALL WITH WOOD, STEEL STUDS, OR STEEL TUBE JAMBS
CURTAIN	22 GA. G40 STAINLESS STEEL		
GUIDES	11 GA. GREY PRIMED STEEL		
BOTTOM BAR	G40 STAINLESS STEEL		