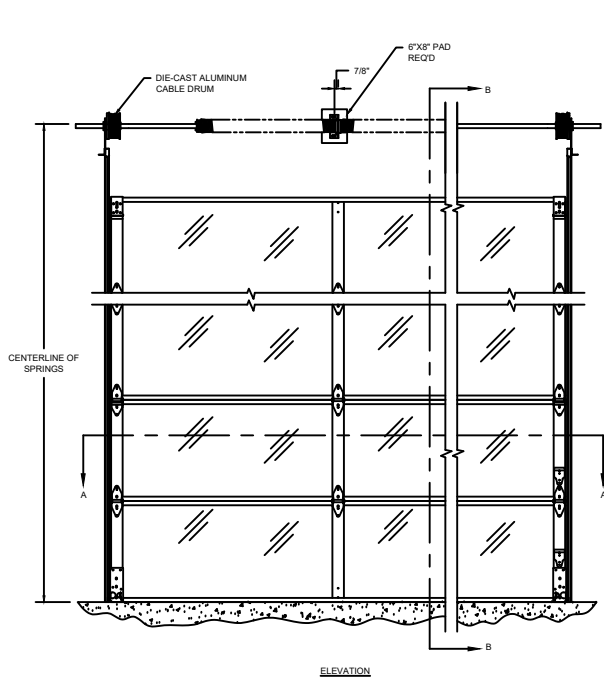
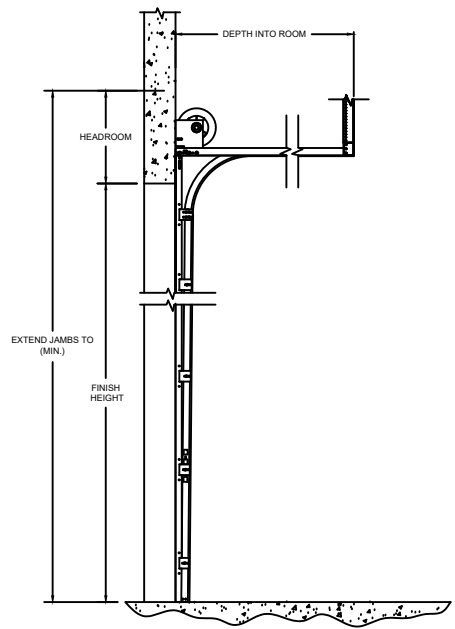


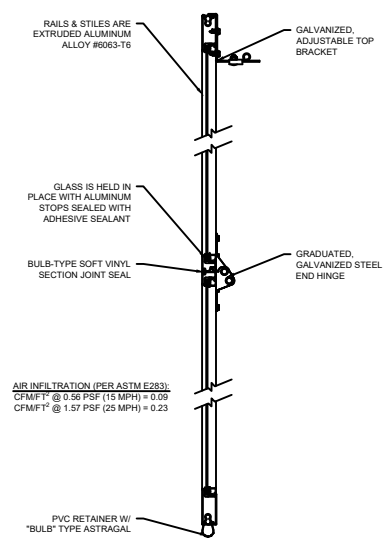
MODEL	STANDARD MAX. VALUES	
	WIDTH	HEIGHT
451	22' 2"	16' 1"



ELEVATION

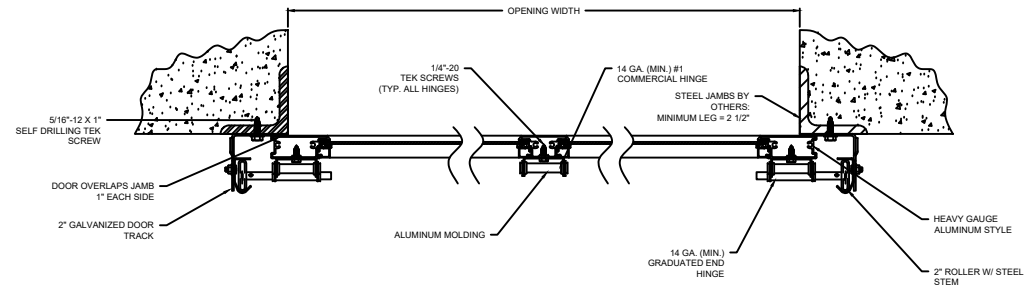


SIDE ELEVATION  
STANDARD LIFT



SECTION B-B

OPTIONS	
OPENING WIDTH	
OPENING HEIGHT	
DOOR TRACK SIZE	<input type="checkbox"/> 2" <input type="checkbox"/> 3"
GLAZING OPTIONS	<input type="checkbox"/> DSB GLASS <input type="checkbox"/> ACRYLIC <input type="checkbox"/> TEMPERED GLASS <input type="checkbox"/> CLEAR POLYCARBONATE <input type="checkbox"/> MULTI-WALL POLYCARBONATE <input type="checkbox"/> WIRE GLASS <input type="checkbox"/> LOW E <input type="checkbox"/> POLYCARBONATE <input type="checkbox"/> LAMINATE



SECTION A-A

COMPONENT	MATERIAL	OPERATION	NOTES:
MATERIAL	ALUMINUM ALLOY 6063-T6	MANUAL PULL ROPE	- WARRANTY: 1-YEAR LIMITED
HINGES/FIXTURES	GALVANIZED STEEL		
LOCK	GALVANIZED, INTERIOR-MOUNTED		
WEATHERSTRIP	FLEXIBLE PVC		

# ALUMINUM SECTIONAL

451 ALUMINUM FULL-VIEW DOORS

DWG. NO.	DATE:	<b>Wayne Dalton.</b>
SHEET	BY:	